

A person is seen from behind, sitting on a white surfboard and using a black paddle to move across the ocean. The sun is low on the horizon, creating a bright, hazy glow and reflecting on the water. The sky is filled with soft, white clouds. The overall mood is peaceful and serene.

# THE WESTIN MAUI RESORT & SPA

KA'ANAPALI



## THE LOCATION

“Where the World comes to Play”

3

mile-long sandy beach  
& pedestrian promenade

5

world class  
resort-hotels

7

condo-hotels

2

Trolleys

36

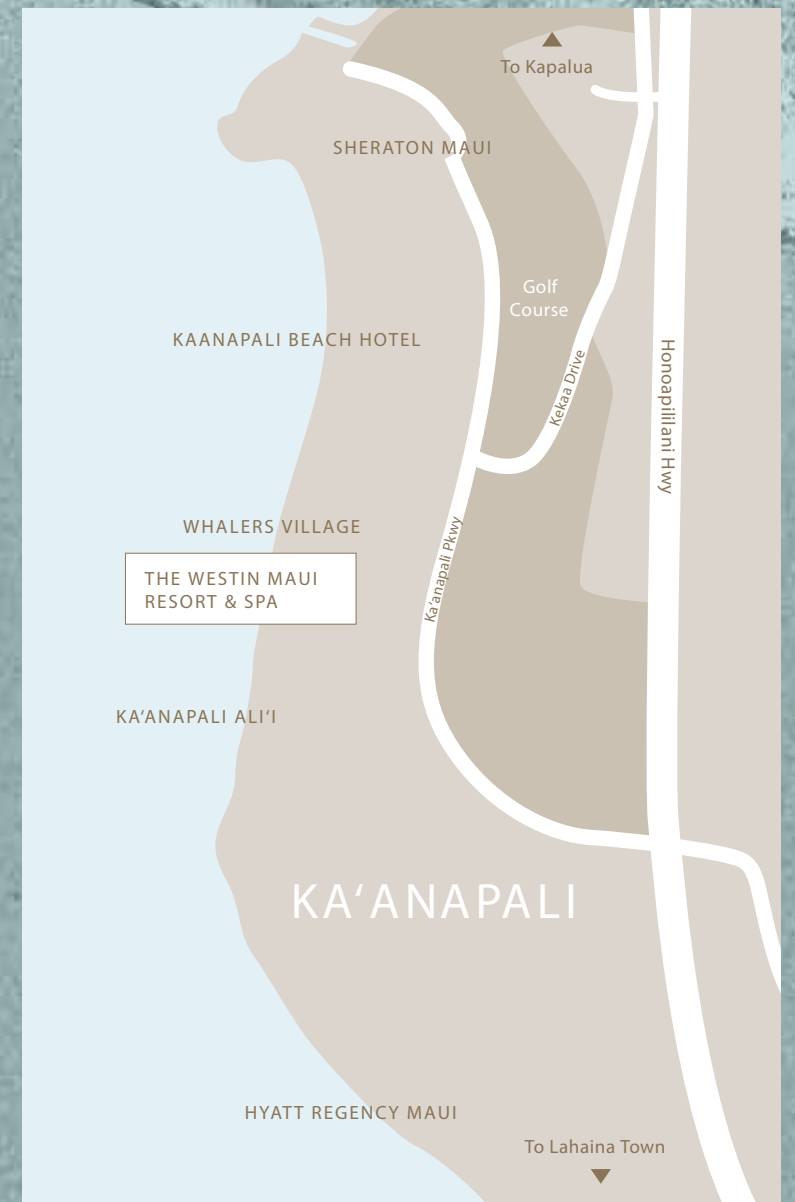
hole championship  
golf course

1,300

residents

1

Shopping  
Center





# THE PROPERTY

AT THE HEART OF KA'ANAPALI

> \$110  
renovations

761  
rooms

28  
suites

5  
pools

3  
pool slides

1  
new kid's club

6  
new retail spaces

1  
new restaurant

430+  
parking stalls



# The New Westin





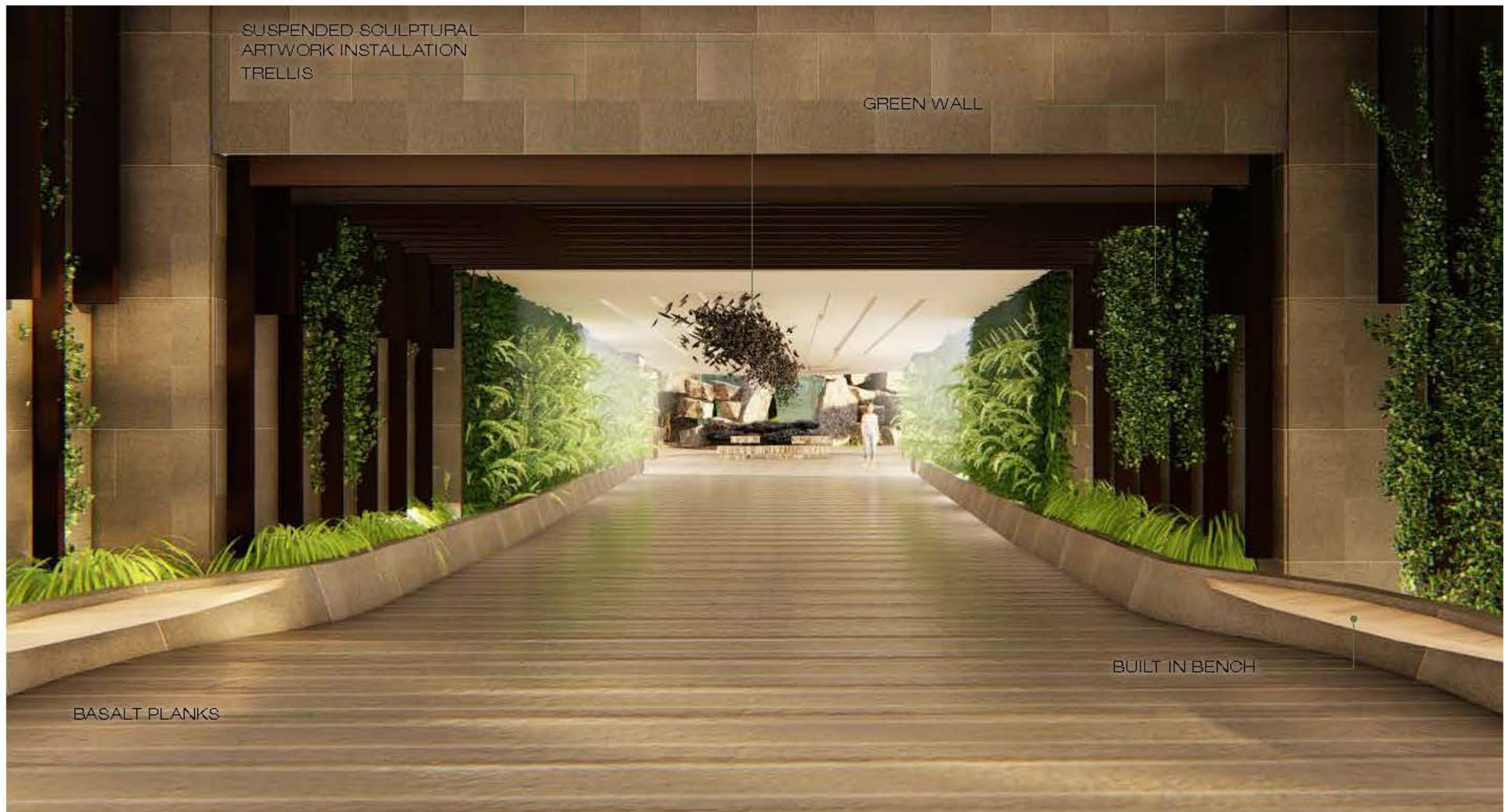
<b>PHASE 1</b>	Model Room* Guestrooms* Garage* Meeting & Ballroom* Existing Pool Refresh Entry Drive Porte Cochere Lobby Internal
<b>PHASE 2</b>	Lobby Exterior (Pool) Retail Family Pool Adult Pool Luau Beach Shack
<b>PHASE 3</b>	Pool Bar F&B Specialty Restaurant Spa Tower Lounge Market Fitness

\* = not included in this package

## OVERALL MASTERPLAN







## ENTRY PORTAL APPROACH





## LOBBY EXTERIOR 3





ELEVATOR LOBBY

KIDS CLUB

RETAIL EXTENSION

(E) OFFICE

RETAIL

RETAIL CORRIDOR

LOBBY RESTROOMS

TRELLIS TRAIL

PERFORMANCE MOUND

(E) POND

POND BOARDWALK W/  
INTEGRATED SEATING

(E) WATERFALL

## LOBBY EXTERIOR & RETAIL





## RETAIL



THE ISLAND OF MAUI 2019

# The Valley Isle





>24.2M  
visitor days

>3M  
Visitors

69%  
repeat  
visitors

31%  
first time  
visitors



85%

Domestic US  
visitor

15%

International  
visitor

> 50%

visitors stay  
in hotels

\$5.12B

visitor  
spending







\$176

daily spending  
U.S. West Coast  
visitor

\$212

daily spending  
U.S. East Coast  
visitor

2nd

most visited  
island in HI

+8%

Yr /Yr  
in visitor  
spending



# THE WESTIN MAUI

## RESORT & SPA

KA'ANAPALI

- \* New small retail spaces
- \* 11'2" high ceilings
- \* 18 ft min frontage
- \* Vanilla Shell condition

### Monthly PSF Charges:

- \* Base Rent: \$8.00
- \* Maintenance Fund \$1.75
- \* Percentage Rent: 12%

### Exclusively Listed

JFodor & Co, LLC  
Jessica Fodor (B)  
808.744.7794 x 101  
JF@JFodor.com

 @HawaiiResortRetail

 @WaikikiRetail

