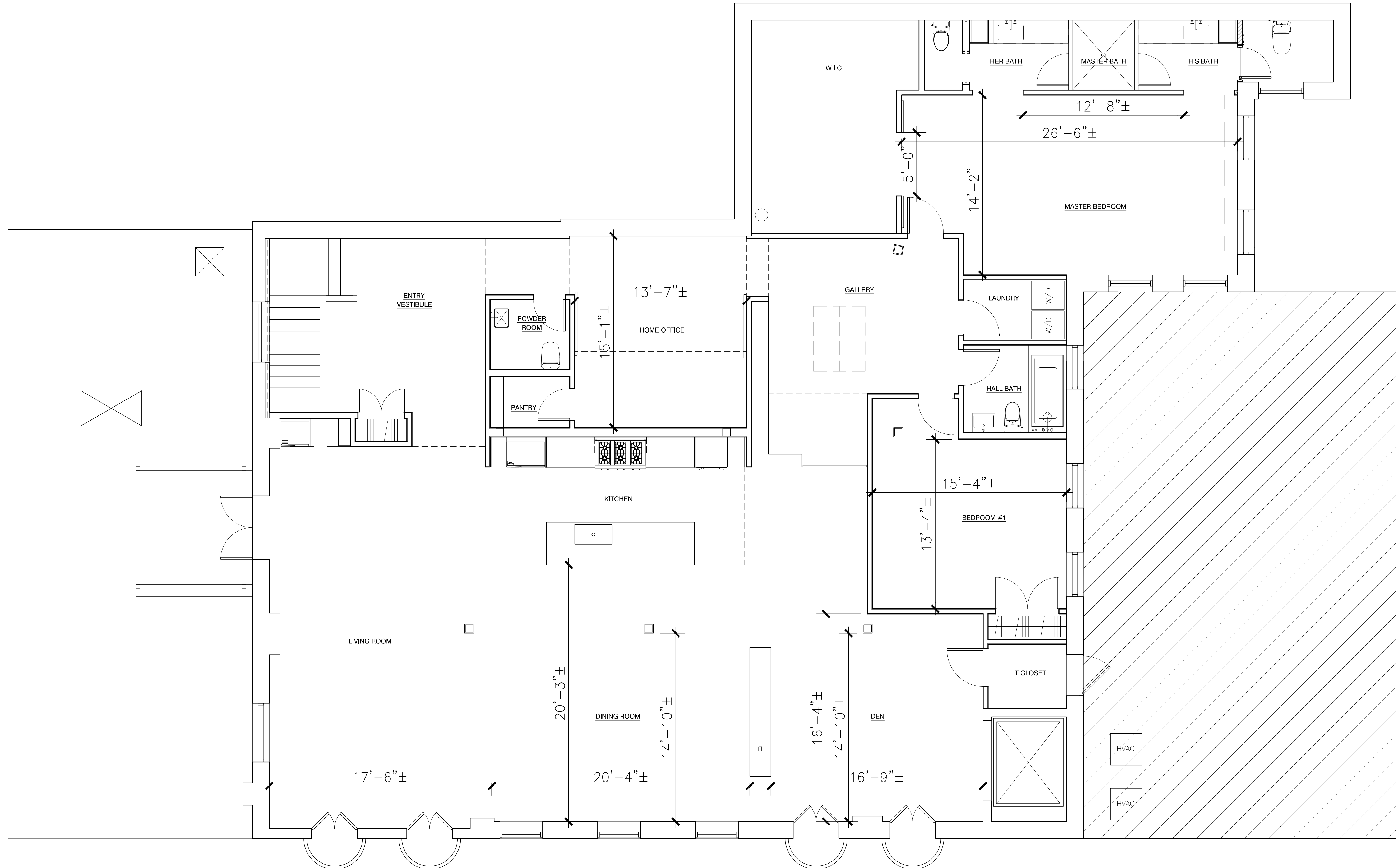


1 2 3 4 5 6 7 8 9 10 11 12 13 14 15 16

P  
O  
N  
M  
L  
K  
J  
I  
H  
G  
F  
E  
D  
C  
B  
A

GENERAL ARCHITECTURAL NOTES



- EXISTING CONSTRUCTION TO REMAIN
- PROPOSED FULL-HEIGHT PARTITION
- PARTIAL HEIGHT PARTITION
- EXISTING DOOR TO REMAIN
- PROPOSED DOOR

No.	REVISIONS/SUBMISSIONS	Date

1431 COLTON ROAD  
GLADWYNE, PA 19035

**CANNO**design  
109 SOUTH 13TH STREET 2ND FLR  
PHILADELPHIA, PA 19106

Drawing Title  
**PROPOSED 3RD FLOOR PLAN**

Seal	Drawn	Project No.
	Checked	CAD File No.
	Reviewed	Drawing No.
	Date	
	Scale	

**A-101**

**A1** PROPOSED 3RD FLOOR PLAN

1/4"=1'-0"

1 2 3 4 5 6 7 8 9 10 11 12 13 14 15 16