

Beverly Hills Post Office

Ellison Drive,  
Beverly Hills, CA 90210

LA  
LUXURIES



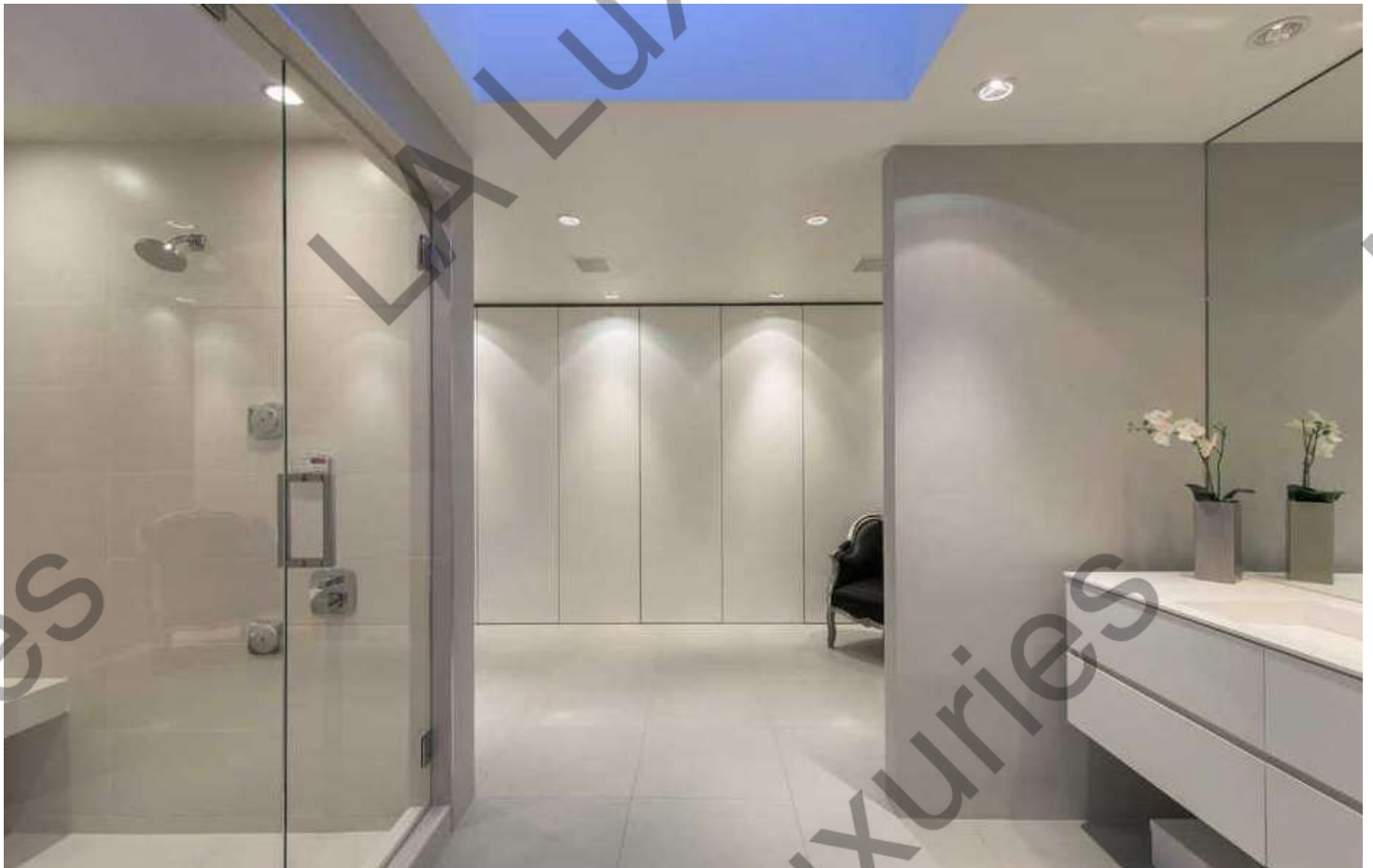
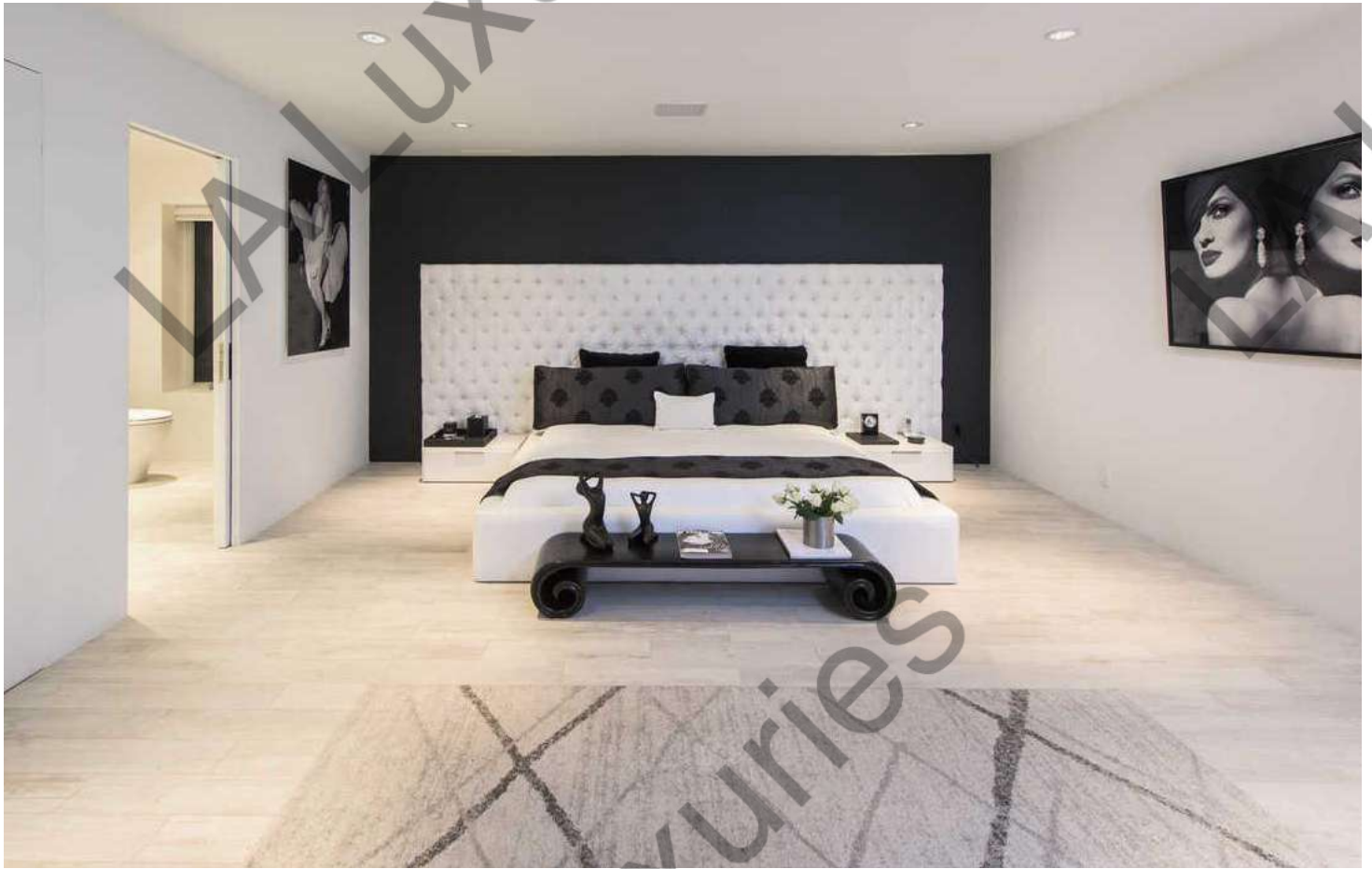


5 BEDROOM / 6 BATHROOM

Meticulous view property on a quiet cul-de-sac in Beverly Hills. This private and pristine modern home is the perfect spring-summer vacation getaway. With high ceilings, an open floor plan, and sliding glass doors that open fully, enjoy the gorgeous views in the most serene and ambient setting.

5 BD 6 BA 5,700 SF \$50,000









# LA LUXURIES

## Amenities

Common Outdoor Space	Pool
Washer / Dryer in Unit	Laundry in Building
Air Conditioning	High Ceilings
Parking Included	Private Outdoor Space
Infinity Pool	

## Property Details

Status	Active
MLS Type	Residential Lease / Single Family
County	Los Angeles County

## Key Details

Area	Beverly Hills Post Office (C02)
Architectural Style	Contemporary
View	Canyon View, Park Or Green Belt View
Parking Spaces Total	4
Pool	Yes
Cooling Type	Central A/C
Furnished	Furnished

## Interior Features

Appliances	Dishwasher, Dryer, Freezer, Garbage Disposal, Refrigerator, Washer
Bathroom Features	Powder Room
Cooking Appliances	Built-Ins, Range Hood, Microwave, Range
Eating Areas	Breakfast Area, Dining Area
Fireplace Features	Great Room, Master Bedroom, Patio
Fireplace	Yes
Heating	Central Furnace
Interior Features	Bar, Furnished, Built-Ins
Laundry Locations	Inside
Rooms	Dining Room, Master Bedroom, Great Room, Entry, FamilyRoom, Guest-Maids Quarters, LivingRoom, Office