

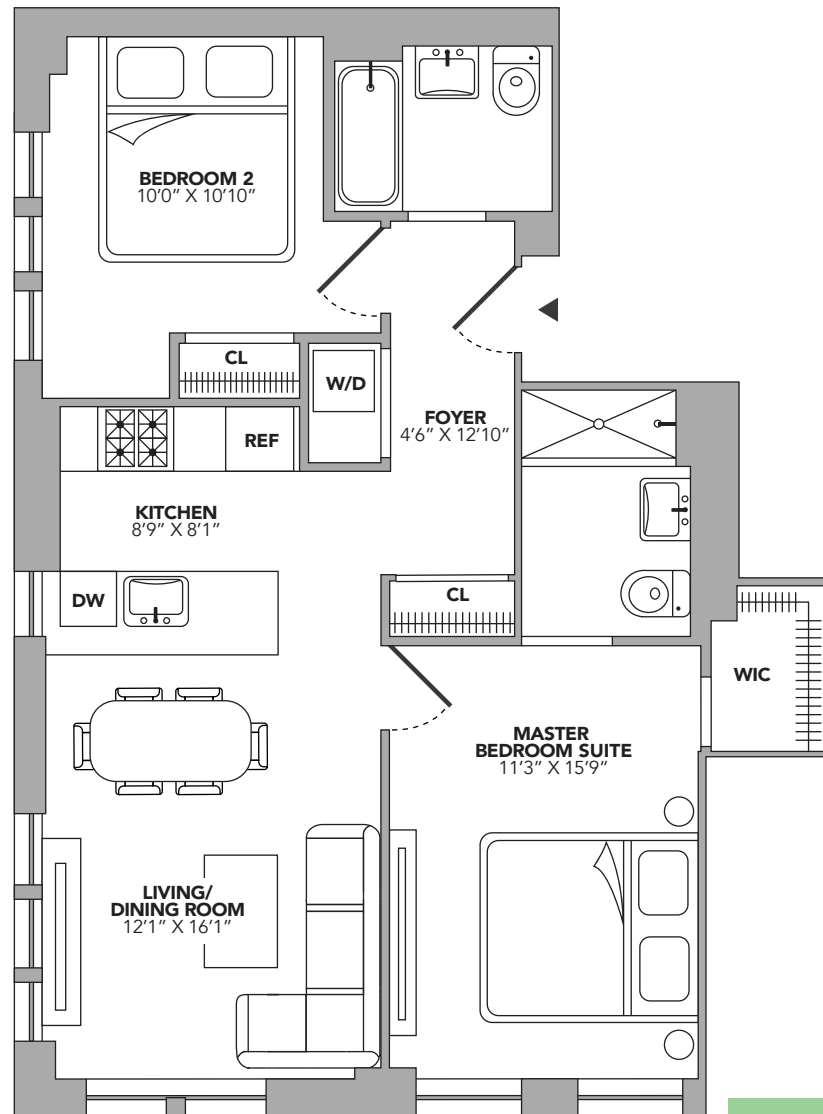
# 253 Tompkins on the park

## RESIDENCE 4A

FOURTH FLOOR  
2 BEDROOMS  
2 BATHROOMS

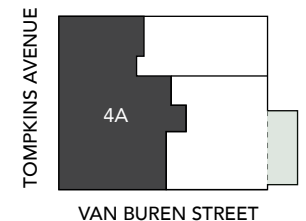
977 INTERIOR SQUARE FEET  
(91 SQUARE METERS)

CORNER LIVING/DINING ROOM WITH DIRECT PARK VIEWS  
MASTER BEDROOM WITH  
EN-SUITE BATHROOM AND WALK-IN CLOSET  
WASHER/DRYER



*corcoran*  
EXCLUSIVE MARKETING & SALES AGENT

The Randy Baruh Team  
baruhteam@corcoran.com  
212.941.2568



All dimensions are approximate and subject to normal construction variances and tolerances. Plans and dimensions may contain minor variations from floor to floor. The square footage on this floor plan exceeds the usable square footage. The furniture depicted herein is not included in the sale of the Unit. The complete Offering Terms are in an Offering Plan available from the Sponsor, File No. CD18-0441. Equal Housing Opportunity.