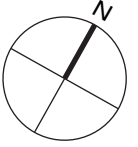


253 Tompkins on the park



DUPLEX A

FIRST FLOOR

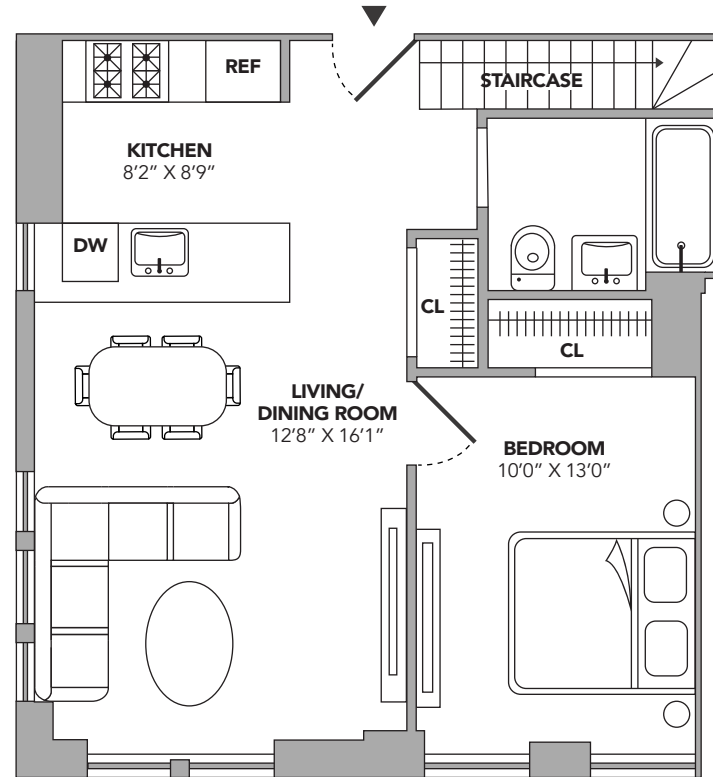
1 BEDROOM
1 BATHROOM
1 POWDER ROOM

1,060 INTERIOR SQUARE FEET
(98 SQUARE METERS)

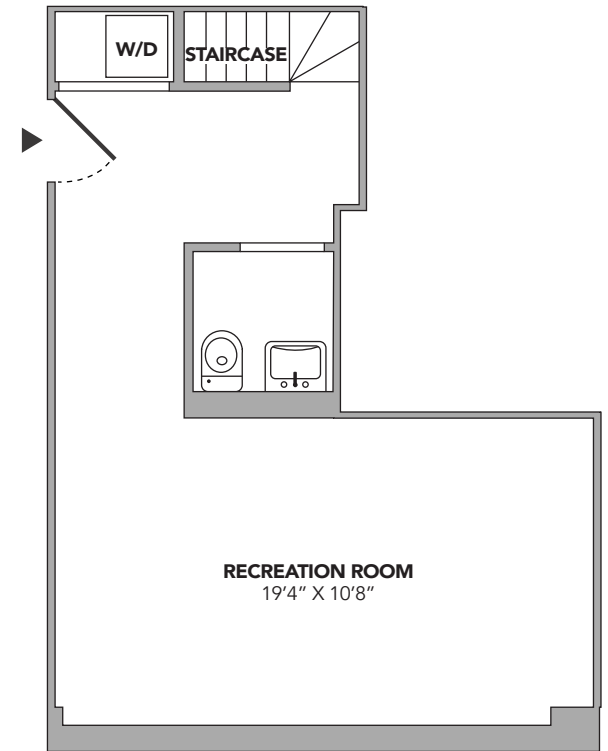
DUPLEX RESIDENCE

EXPANSIVE LOWER LEVEL WITH POWDER ROOM

WASHER/DRYER



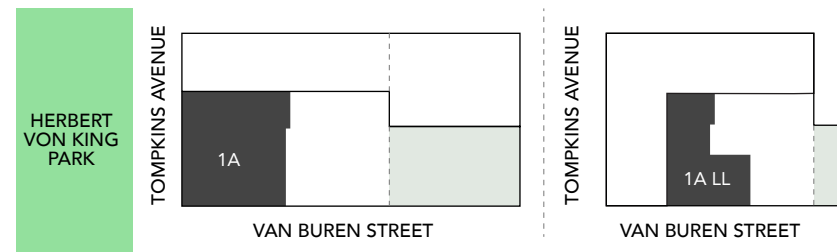
UPPER LEVEL



LOWER LEVEL

corcoran
EXCLUSIVE MARKETING & SALES AGENT

The Randy Baruh Team
baruhteam@corcoran.com
212.941.2568



All dimensions are approximate and subject to normal construction variances and tolerances. Plans and dimensions may contain minor variations from floor to floor. The square footage on this floor plan exceeds the usable square footage. The furniture depicted herein is not included in the sale of the Unit. The complete Offering Terms are in an Offering Plan available from the Sponsor, File No. CD18-0441. Equal Housing Opportunity.