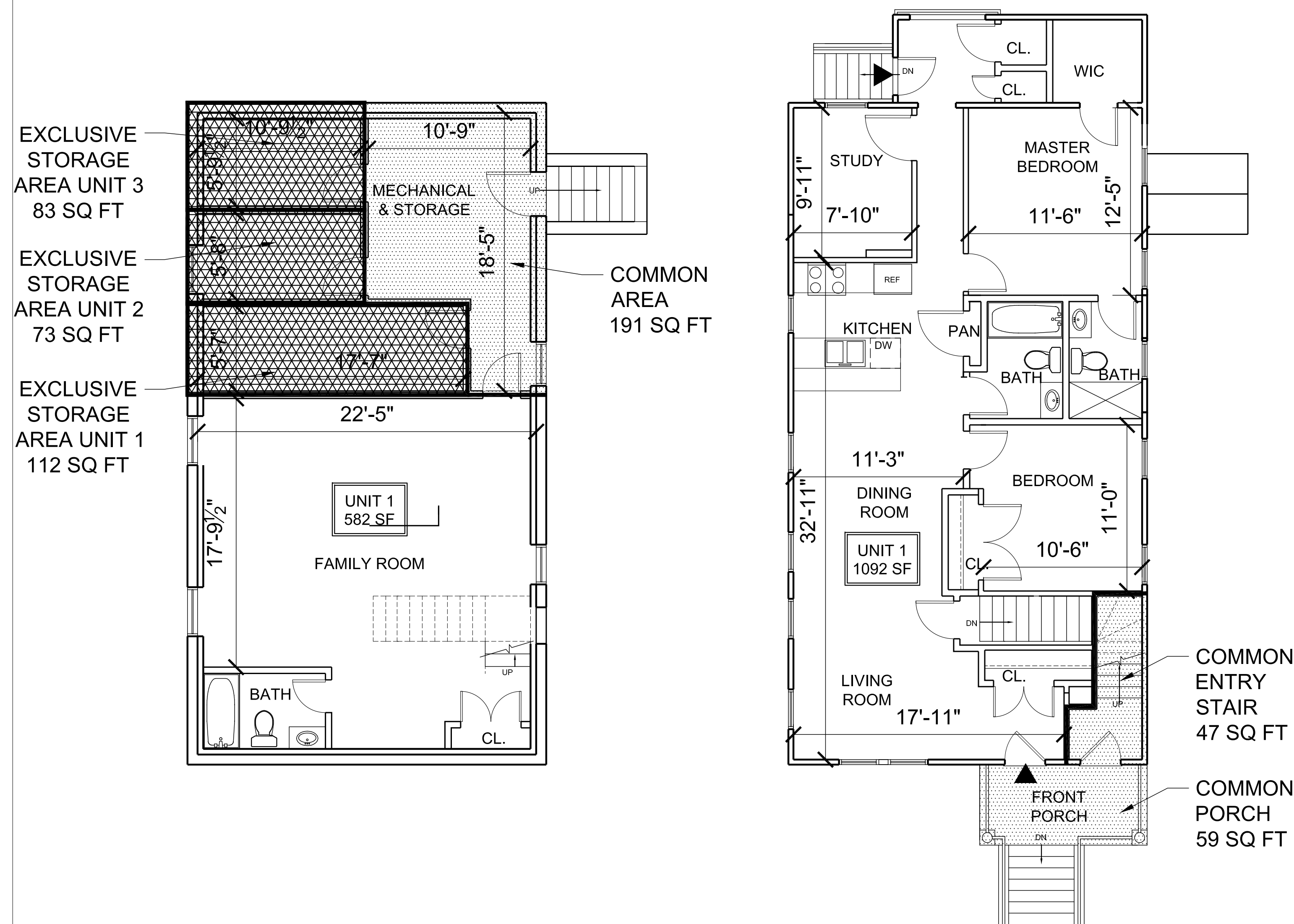
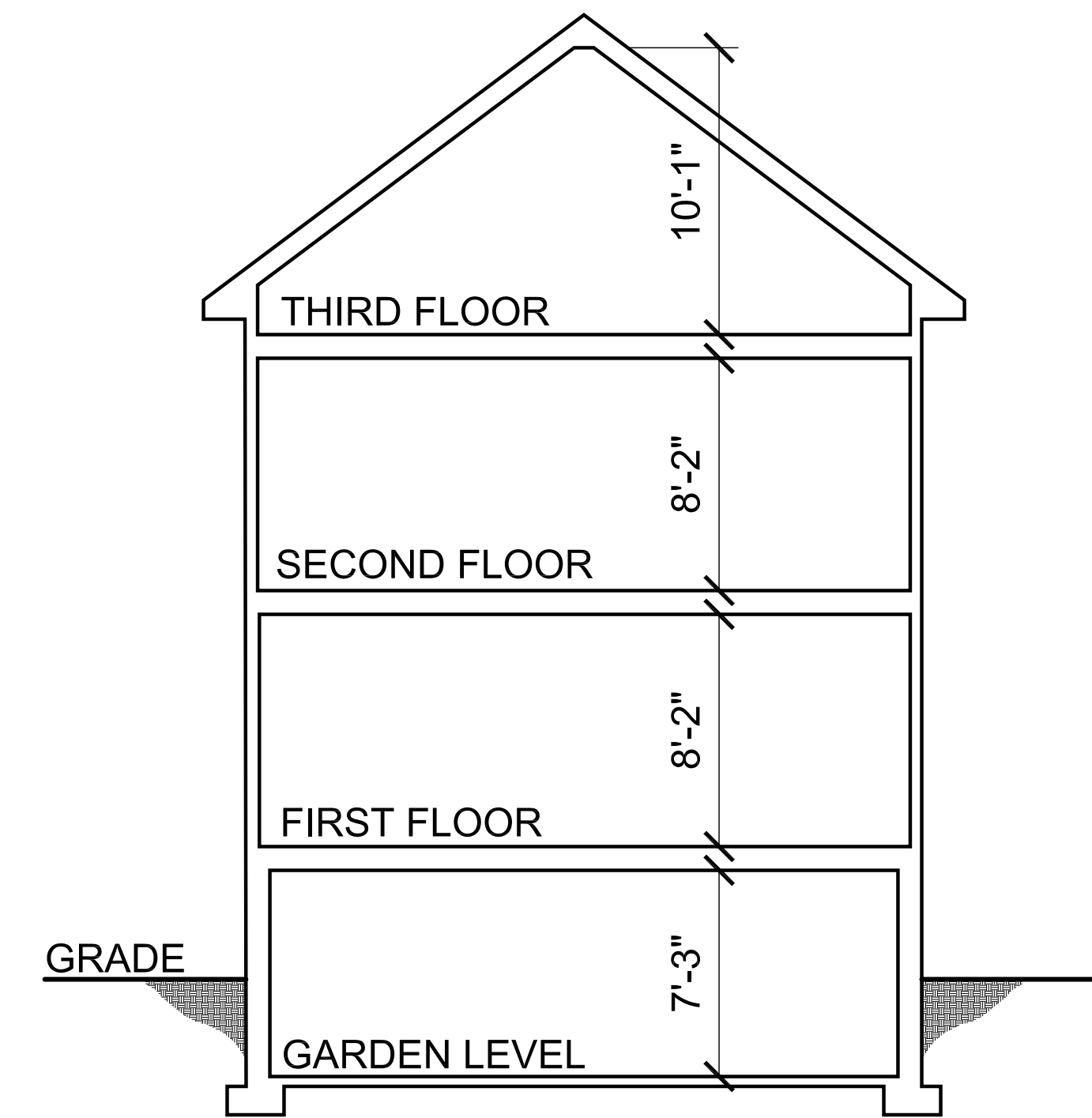
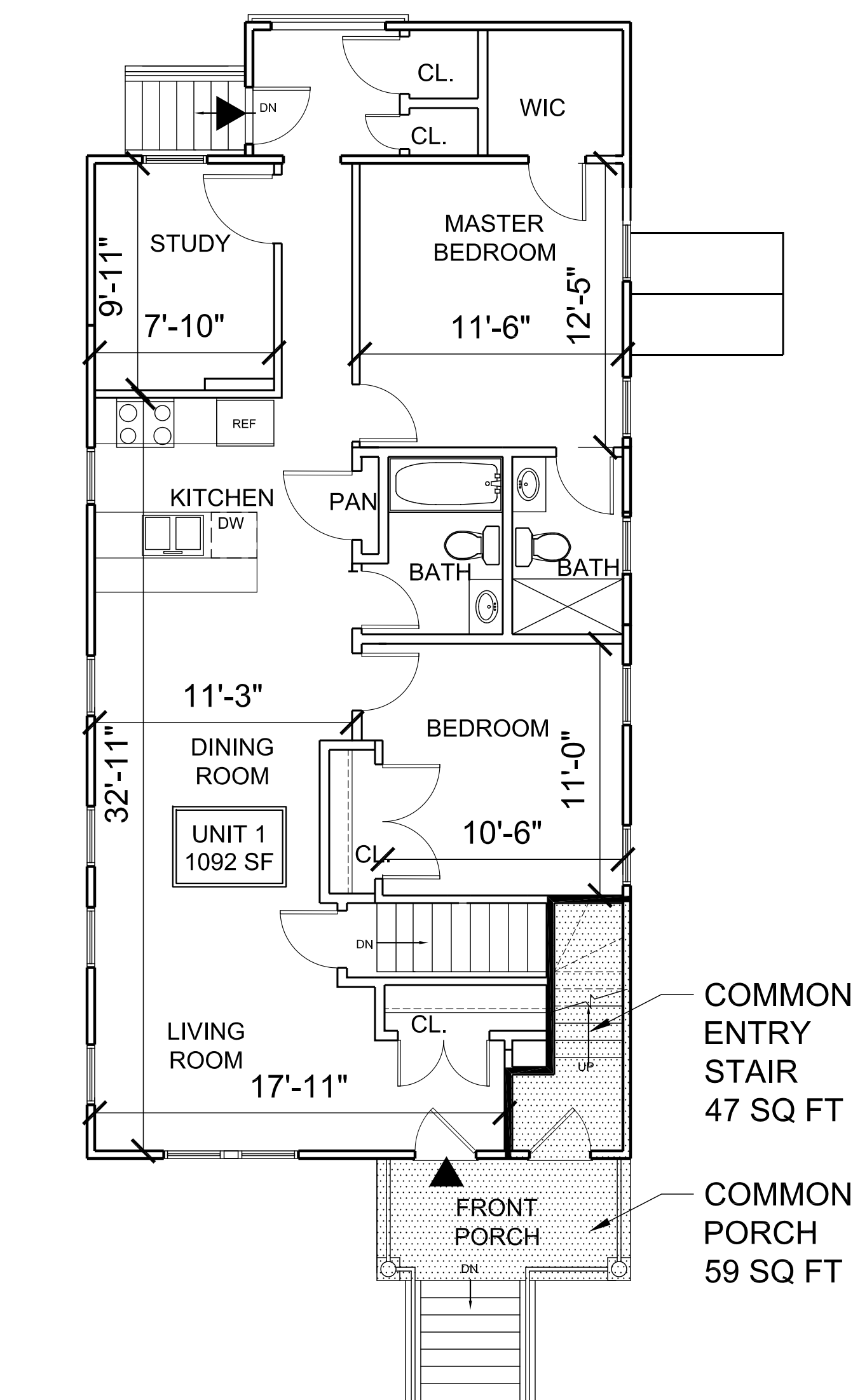


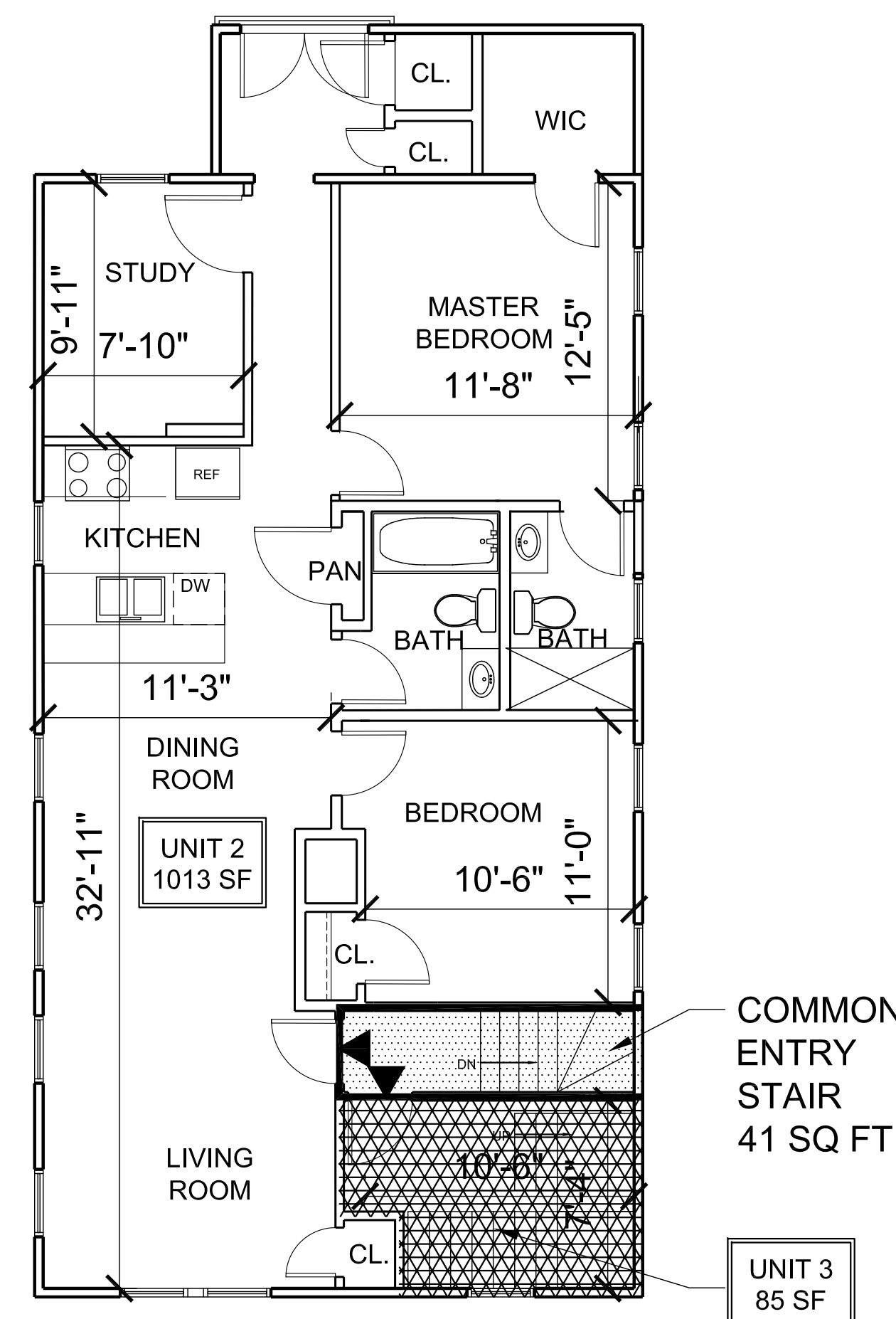
UNIT NO.	UNIT SQUARE FOOTAGE	
UNIT 1	1,674 SF UNIT +112 STORAGE = 1,786 SF TOTAL	
UNIT 2	1,013 SF UNIT +73 SF STORAGE= 1,086 SF TOTAL	
UNIT 3	1,182 SF UNIT +83 SF STORAGE= 1,265 SF TOTAL	
FLOOR NO.	GROSS TOTAL FLOOR AREA	COMMON FLOOR AREA
GARDEN	1,041 SF TOTAL	191 SF.
1	1,139 SF TOTAL	47 SF.
2	1,139 SF TOTAL	41 SF.
3	1,097 SF TOTAL	-



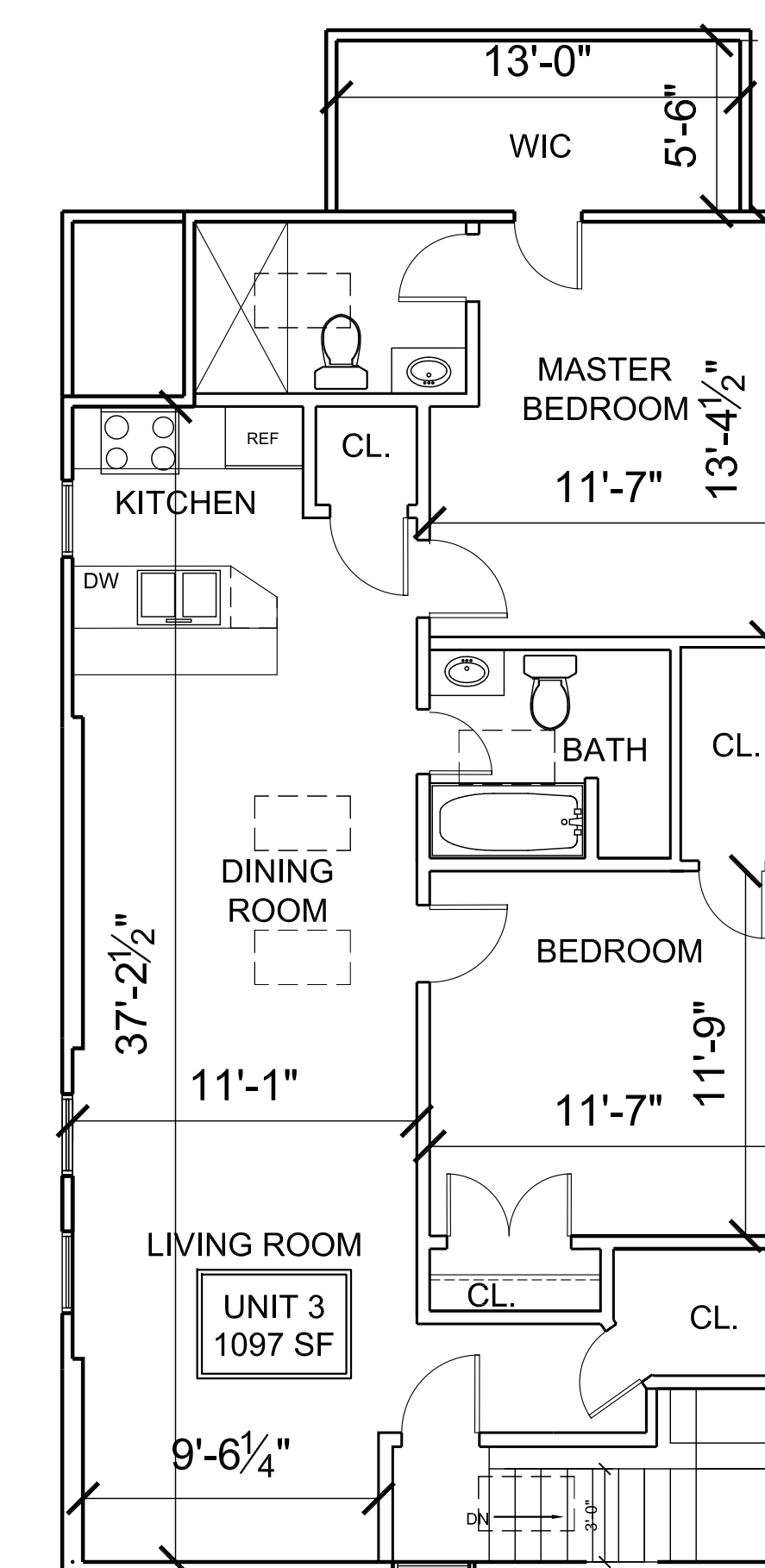
1 GARDEN LEVEL FLOOR PLAN
MD-1 Scale: 3/16"=1'-0"



2 FIRST FLOOR PLAN
MD-1 Scale: 3/16"=1'-0"



3 SECOND FLOOR PLAN
MD-1 Scale: 3/16"=1'-0"



3 THIRD FLOOR PLAN
MD-1 Scale: 3/16"=1'-0"

FOR REGISTRY USE ONLY

FOR PLANNING BOARD USE ONLY

THE 31-33 CLYDE STREET CONDOMINIUM
31-33 CLYDE STREET
SOMERVILLE, MA

ARCHITECT
T K G
KHALSA DESIGN INC.
17 IVY LANE ST., SUITE 400
SOMERVILLE, MA 02143
TEL: 617-591-8682 FAX: 617-591-2086

Certification:
I CERTIFY THAT THIS PLAN FULLY AND ACCURATELY DEPICTS THE LAYOUT LOCATION UNIT NUMBER AND DIMENSIONS OF 31-33 CLYDE STREET SOMERVILLE, MA. AS BUILT. THIS PLAN HAS BEEN PREPARED IN CONFORMITY WITH THE RULES AND REGULATIONS OF THE MIDDLESEX COUNTY SOUTH REGISTRY OF DEEDS.

JAI SINGH KHALSA,
NCARB, ARCHITECT
MA REG. NO. 6042
DATE: 11/06/2014

REGISTRATION:

- LEGEND:
- COMMON AREA
 - EXCLUSIVE USE
 - DEMISING WALL
 - UNIT ENTRY
 - INTERIOR WALLS

Date: 11-06-2014
Scale: 3/16"=1'-0"
Drawn By: MT
Checked By: JSK

MASTER DEED

MD-1