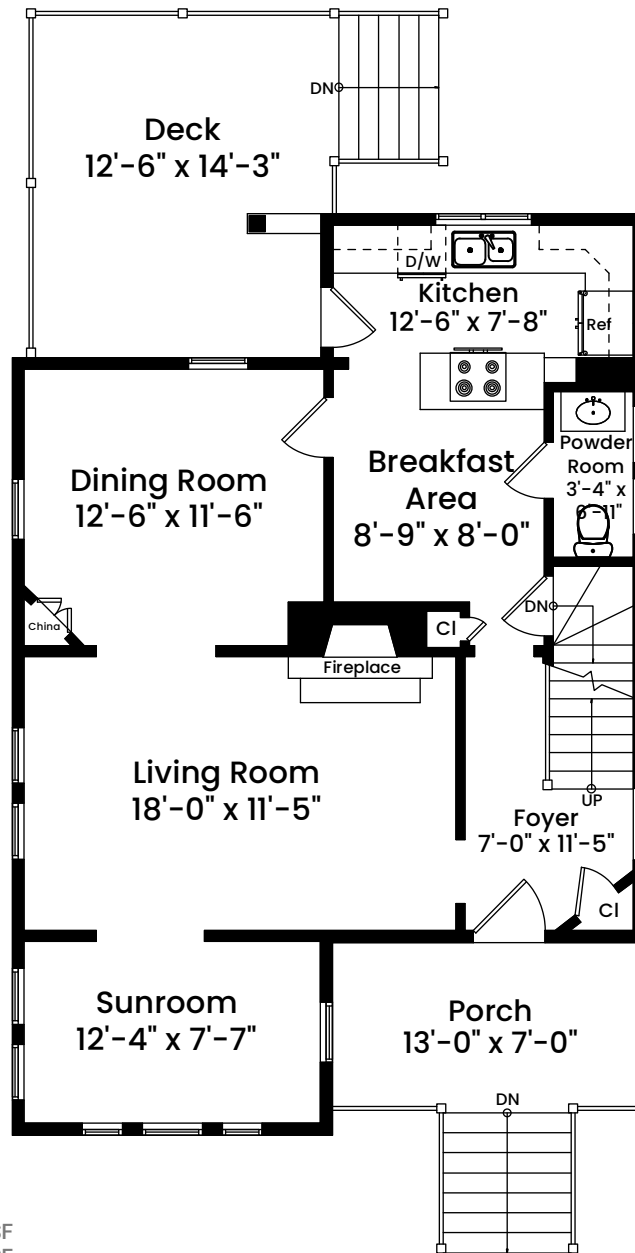


# 83 Scituate Street | Arlington, MA 02476

## FIRST FLOOR CEILING HEIGHT 8'-1"



### Area Calculations

First Floor	831 SF
Second Floor	750 SF
Third Floor	429 SF
Total Gross Living Area	2,010 SF
Third Floor Area Below 5'	114 SF
Semi-Finished Lower Level	750 SF
Total Area	2,874 SF

Architecturally drafted in June 2021 by:  
National Floor Plans  
Associate Member | American Institute of Architects  
Contact [www.nationalfloorplans.com](http://www.nationalfloorplans.com) for .dwg AutoCAD files  
or square footage questions about this property.

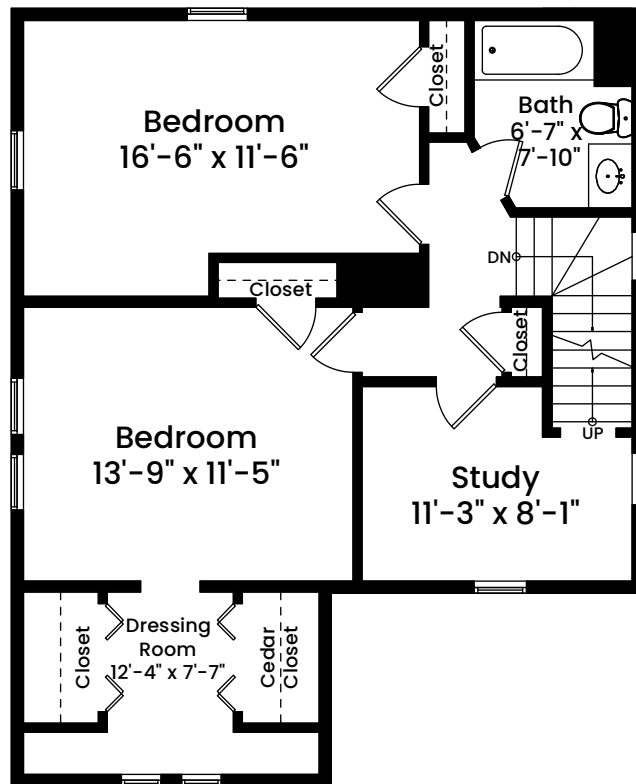


1 1 2 4 8  
Scale 1/8" inch = 1 foot

Dimensions are not guaranteed and are provided for informational purposes only.  
Individual room dimensions are not used to calculate overall square footage.

# 83 Scituate Street | Arlington, MA 02476

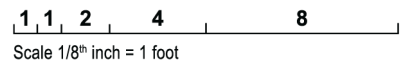
## SECOND FLOOR CEILING HEIGHT 8'-1"



### Area Calculations

First Floor	831 SF
Second Floor	750 SF
Third Floor	429 SF
Total Gross Living Area	2,010 SF
Third Floor Area Below 5'	114 SF
Semi-Finished Lower Level	750 SF
Total Area	2,874 SF

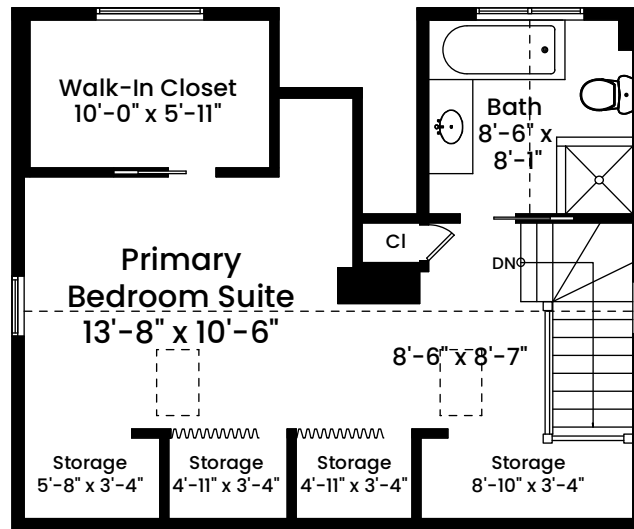
Architecturally drafted in June 2021 by:  
National Floor Plans  
Associate Member | American Institute of Architects  
Contact [www.nationalfloorplans.com](http://www.nationalfloorplans.com) for .dwg AutoCAD files  
or square footage questions about this property.



Dimensions are not guaranteed and are provided for informational purposes only.  
Individual room dimensions are not used to calculate overall square footage.

# 83 Scituate Street | Arlington, MA 02476

## THIRD FLOOR CEILING HEIGHT 8'-2"



### Area Calculations

First Floor	831 SF
Second Floor	750 SF
Third Floor	429 SF
Total Gross Living Area	2,010 SF
Third Floor Area Below 5'	114 SF
Semi-Finished Lower Level	750 SF
Total Area	2,874 SF

Architecturally drafted in June 2021 by:  
National Floor Plans  
Associate Member | American Institute of Architects  
Contact [www.nationalfloorplans.com](http://www.nationalfloorplans.com) for .dwg AutoCAD files  
or square footage questions about this property.

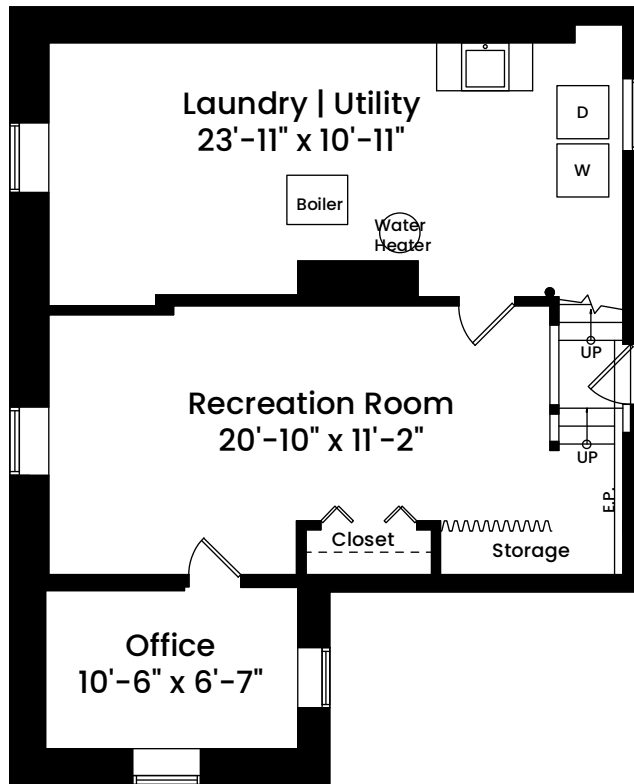


1 1 2 4 8  
Scale 1/8" inch = 1 foot

Dimensions are not guaranteed and are provided for informational purposes only.  
Individual room dimensions are not used to calculate overall square footage.

# 83 Scituate Street | Arlington, MA 02476

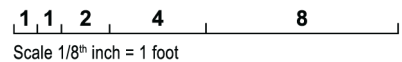
**LOWER LEVEL**  
 CEILING HEIGHT 6'-10"



**Area Calculations**

First Floor	831 SF
Second Floor	750 SF
Third Floor	429 SF
Total Gross Living Area	2,010 SF
Third Floor Area Below 5'	114 SF
Semi-Finished Lower Level	750 SF
Total Area	2,874 SF

Architecturally drafted in June 2021 by:  
 National Floor Plans  
 Associate Member | American Institute of Architects  
 Contact [www.nationalfloorplans.com](http://www.nationalfloorplans.com) for .dwg AutoCAD files  
 or square footage questions about this property.



Dimensions are not guaranteed and are provided for informational purposes only. Individual room dimensions are not used to calculate overall square footage.