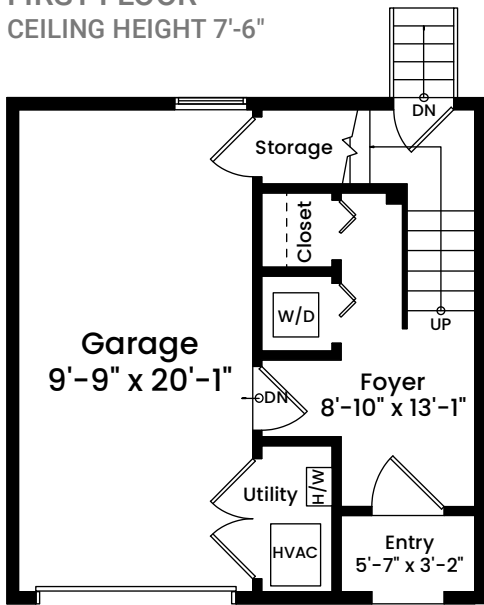
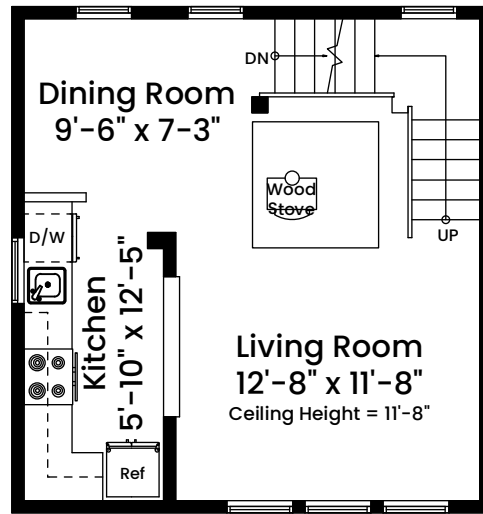


# 47 Cogswell Avenue, Unit 13 | Cambridge, MA 02140

**FIRST FLOOR**  
CEILING HEIGHT 7'-6"



**SECOND FLOOR**  
CEILING HEIGHT 7'-6"



Architecturally drafted in April 2021 by:  
National Floor Plans  
Associate Member | American Institute of Architects  
Contact [www.nationalfloorplans.com](http://www.nationalfloorplans.com) for .dwg AutoCAD files  
or square footage questions about this property.

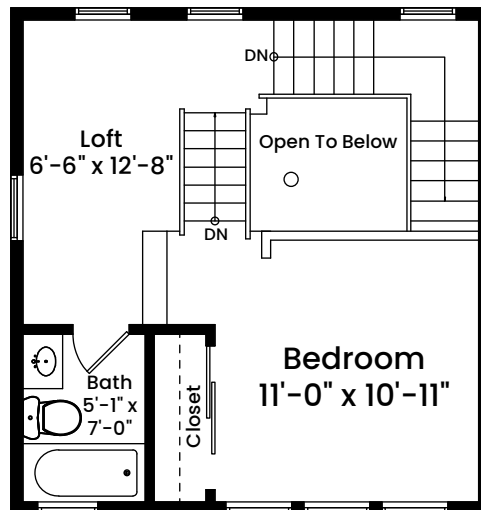


1 1 2 4 8  
Scale 1/8" inch = 1 foot

Dimensions are not guaranteed and are provided for informational purposes only.  
Individual room dimensions are not used to calculate overall square footage.

# 47 Cogswell Avenue, Unit 13 | Cambridge, MA 02140

## THIRD FLOOR CEILING HEIGHT 13'-2"



Architecturally drafted in April 2021 by:  
National Floor Plans  
Associate Member | American Institute of Architects  
Contact [www.nationalfloorplans.com](http://www.nationalfloorplans.com) for .dwg AutoCAD files  
or square footage questions about this property.



1 1 2 4 8  
Scale 1/8" = 1 foot

Dimensions are not guaranteed and are provided for informational purposes only.  
Individual room dimensions are not used to calculate overall square footage.