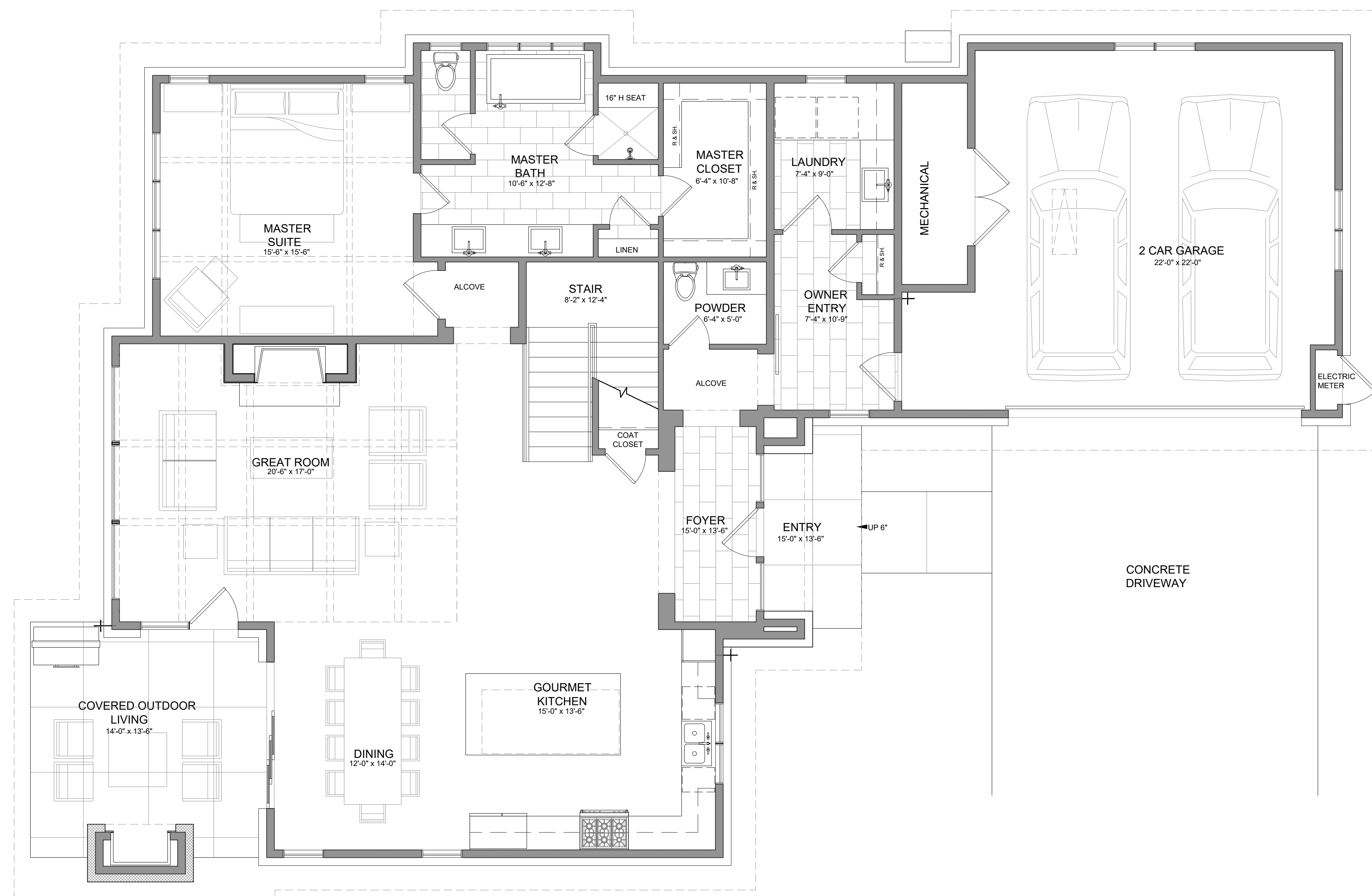


ASPEN GLEN
 Clearwater Model



NOTE TO CONTRACTOR:
 THE USE OF THESE PLANS SHALL BE RESTRICTED TO THE ORIGINAL PROJECT FOR WHICH THEY WERE PREPARED. ANY AMBIGUITIES, INCONSISTENCIES, INCOMPLETIONS, OR OMISSIONS ENCLOSED BETWEEN THE DRAWINGS, SPECIFICATIONS, OR SET CONDITIONS SHALL BE REPORTED IMMEDIATELY TO THE ARCHITECT. FAILURE TO NOTIFY THE ARCHITECT OF SUCH OR FAILURE TO NOTIFY THE ARCHITECT OF CHANGES MADE FROM THEIR PLANS SHALL RELIEVE THE ARCHITECT FROM RESPONSIBILITY FOR ALL RESULTING CONSEQUENCES.

DATE 10.15.2019
 PROJECT NO. AGP-2019
 REVISIONS

NOT FOR
 CONSTRUCTION

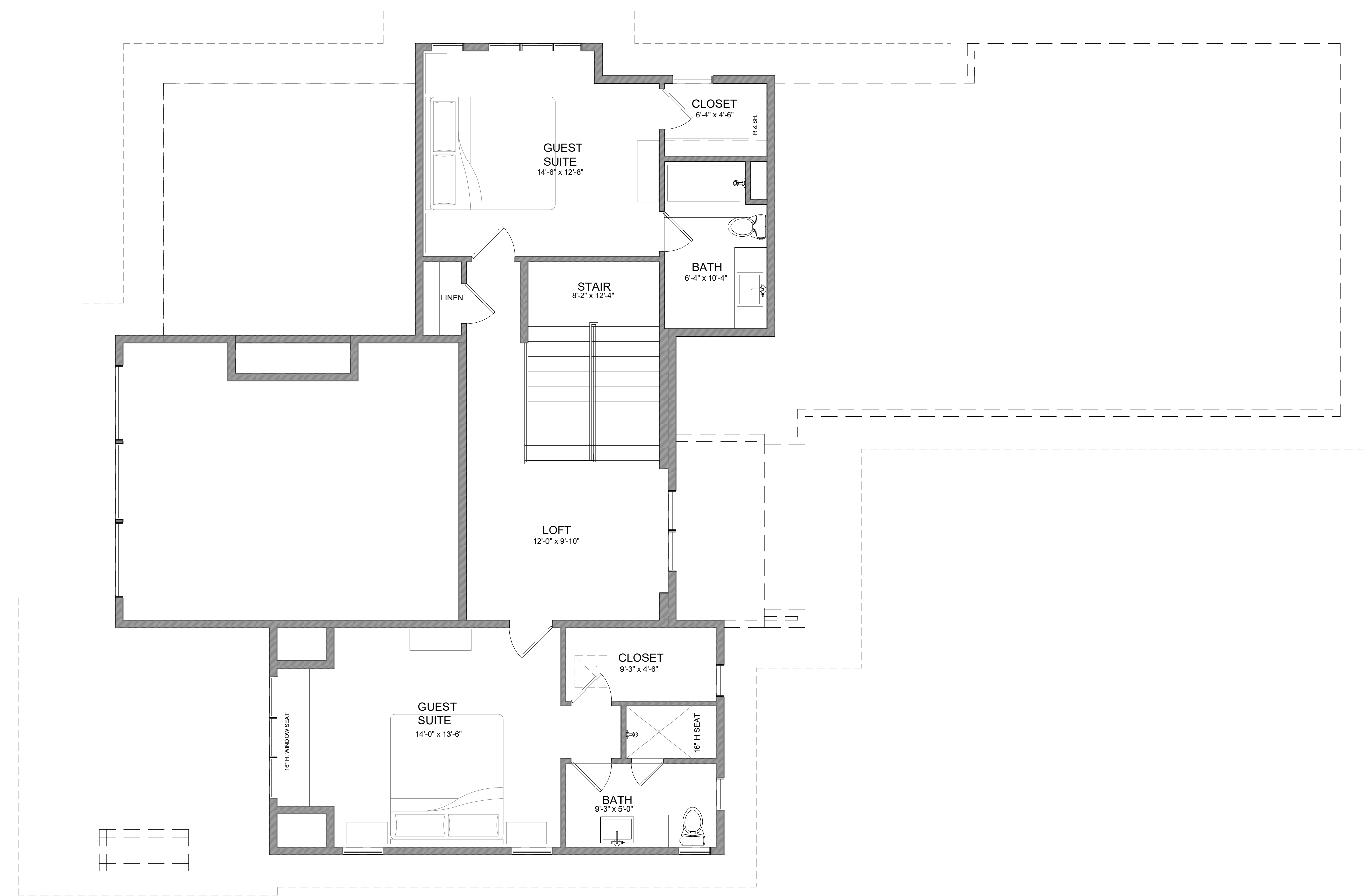
MAIN FLOOR PLAN

A 1.1

1 MAIN FLOOR PLAN
 A1.1 SCALE: 1/4"=1'-0"

AREAS:
 MAIN LEVEL: 1914 SQ. FT.
 GARAGE: 614 SQ. FT.

ASPEN GLEN
 Clearwater Model



NOTE TO CONTRACTOR:
 THE USE OF THESE PLANS SHALL BE RESTRICTED TO THE ORIGINAL PROJECT FOR WHICH THEY WERE PREPARED. ANY AMBIGUITIES, DISCREPANCIES, INCONSISTENCIES, OR OMISSIONS ENCLOSED BETWEEN THE DRAWINGS, SPECIFICATIONS, OR SET CONDITIONS SHALL BE REPORTED IMMEDIATELY TO THE ARCHITECT. FAILURE TO NOTIFY THE ARCHITECT OF SUCH OR FAILURE TO NOTIFY THE ARCHITECT OF CHANGES MADE FROM THEIR PLANS SHALL RELIEVE THE ARCHITECT FROM RESPONSIBILITY FOR ALL RESULTING CONSEQUENCES.

DATE	10.15.2019
PROJECT NO.	AGP-2019
REVISIONS	

NOT FOR
 CONSTRUCTION

UPPER FLOOR PLAN

A 1.2

1 UPPER FLOOR PLAN
 A1.2 SCALE: 1/4"=1'-0"

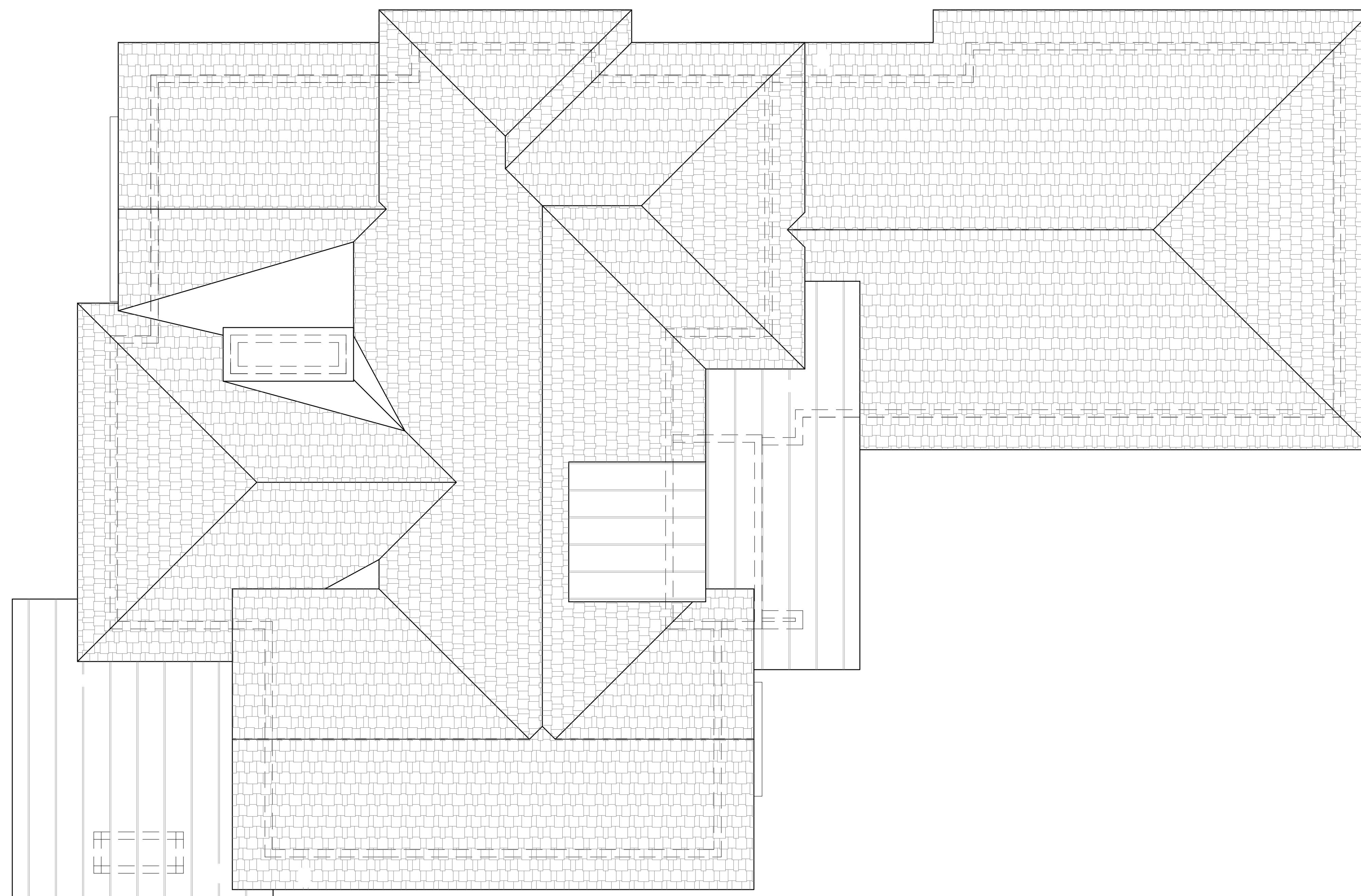
AREAS:
 UPPER LEVEL: 938 SQ. FT.

RESORT CONCEPTS
REDEFINING THE RESORT EXPERIENCE
P.O. Box 2633
27 Main St. Suite 107
Edwards, CO 81632
970.926.1720

EGGERS
ARCHITECTURE, INC.
PO BOX 798 KREMMLING, CO 80459
(970) 724-3411 CELL: (970) 409-9790
don.eggars@eggarsarchitecture.com

BORGERSON
design
P.O. Box 66
Eagle, CO 81631
970-376-1972

ASPEN GLEN
Clearwater Model



NOTE TO CONTRACTOR:
THE USE OF THESE PLANS SHALL BE RESTRICTED TO THE ORIGINAL
PROJECT FOR WHICH THEY WERE PREPARED. ANY AMBIGUITIES,
DISCREPANCIES, INCONSISTENCIES, OR OMISSIONS ENCOUNTERED
BETWEEN THE DRAWINGS, SPECIFICATIONS, OR SET CONDITIONS
SHALL BE REPORTED IMMEDIATELY TO THE ARCHITECT. FAILURE TO
NOTIFY THE ARCHITECT OF SUCH OR FAILURE TO NOTIFY THE
ARCHITECT OF CHANGES MADE FROM THESE PLANS SHALL RELIEVE
THE ARCHITECT FROM RESPONSIBILITY FOR ALL RESULTING
CONSEQUENCES.

DATE 10.15.2019
PROJECT NO. AGP-2019
REVISIONS

NOT FOR
CONSTRUCTION

ROOF PLAN

A 1.3

1 ROOF PLAN
A1.3 SCALE: 1/4"=1'-0"



1 FRONT ELEVATION
 A2.1 SCALE: 1/4"=1'-0"



2 SIDE ELEVATION
 A2.1 SCALE: 1/4"=1'-0"

ASPEN GLEN
 Clearwater Model

NOTE TO CONTRACTOR:
 THE USE OF THESE PLANS SHALL BE RESTRICTED TO THE ORIGINAL
 PROJECT FOR WHICH THEY WERE PREPARED. ANY AMBIGUITIES,
 INCONSISTENCIES, INCORPORATIONS, OR OMISSIONS ENCLOSED
 BETWEEN THE DRAWINGS, SPECIFICATIONS, OR SET CONDITIONS
 SHALL BE REPORTED IMMEDIATELY TO THE ARCHITECT. FAILURE TO
 NOTIFY THE ARCHITECT OF SUCH OR FAILURE TO NOTIFY THE
 ARCHITECT OF CHANGES MADE FROM THESE PLANS SHALL RELIEVE
 THE ARCHITECT FROM RESPONSIBILITY FOR ALL RESULTING
 CONSEQUENCES.

DATE 10.15.2019
 PROJECT NO. AGP-2019
 REVISIONS

NOT FOR
 CONSTRUCTION

ELEVATIONS

A 2.1

RESORT CONCEPTS
 REDEFINING THE RESORT EXPERIENCE
 P.O. Box 2633
 27 Main St. Suite 107
 Edwards, CO 81632
 970.926.1720

EGGERS
 ARCHITECTURE, INC.
 PO BOX 798 KREMMLING, CO 80459
 (970) 724-3411 CELL: (970) 409-9790
 don.eggars@eggarsarchitecture.com

BORGERSON
 design
 P.O. Box 66
 Eagle, CO 81631
 970-376-1972



1 BACK ELEVATION
 A2.2 SCALE: 1/4"=1'-0"



2 SIDE ELEVATION
 A2.2 SCALE: 1/4"=1'-0"

ASPEN GLEN
 Clearwater Model

NOTE TO CONTRACTOR:
 THE USE OF THESE PLANS SHALL BE RESTRICTED TO THE ORIGINAL
 PROJECT FOR WHICH THEY WERE PREPARED. ANY AMBIGUITIES,
 INCONSISTENCIES, INCOMPLETIONS, OR OMISSIONS ENCLOSED
 BETWEEN THE DRAWINGS, SPECIFICATIONS, OR SET CONDITIONS
 SHALL BE REPORTED IMMEDIATELY TO THE ARCHITECT. FAILURE TO
 NOTIFY THE ARCHITECT OF SUCH OR FAILURE TO NOTIFY THE
 ARCHITECT OF CHANGES MADE FROM THESE PLANS SHALL RELIEVE
 THE ARCHITECT FROM RESPONSIBILITY FOR ALL RESULTING
 CONSEQUENCES.

DATE 10.15.2019
 PROJECT NO. AGP-2019
 REVISIONS

NOT FOR
 CONSTRUCTION

ELEVATIONS

A 2.2