

1 MAIN FLOOR PLAN
A1.1 SCALE: 1/4"=1'-0"

AREAS:
MAIN LEVEL: 2552 SQ. FT.
GARAGE: 811 SQ. FT.

RESORT CONCEPTS
REDEFINING THE RESORT EXPERIENCE
P.O. Box 2633
27 Main St. Suite 107
Edwards, CO 81632
970.926.1720

EGGERS
ARCHITECTURE, INC.
PO BOX 798 KREMMLING, CO 80459
(970) 724-3411 CELL: (970) 409-9790
don.eggars@eggarsarchitecture.com

BORGERSON
design
P.O. Box 66
Eagle, CO 81631
970-376-1972

ASPEN GLEN

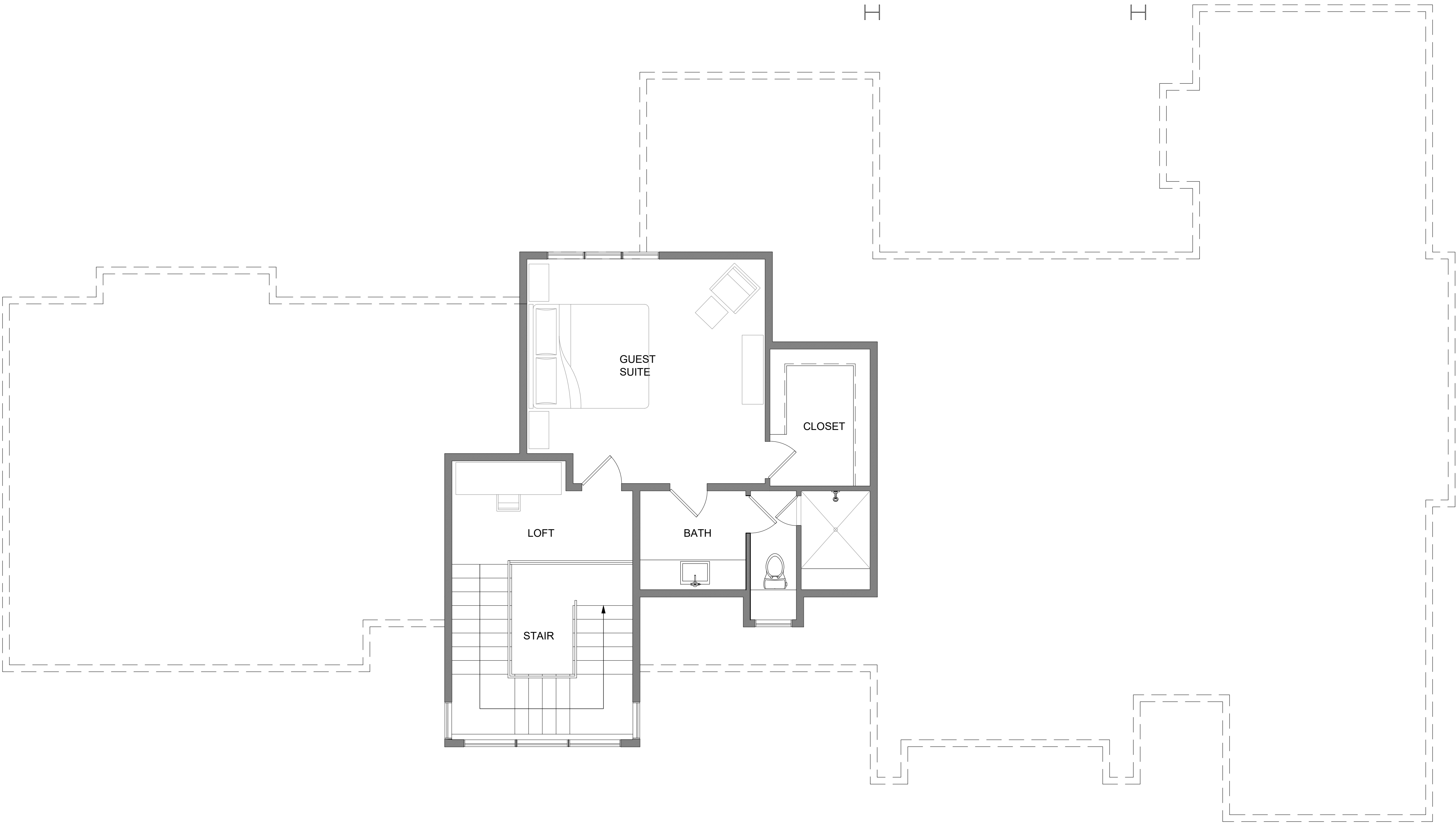
Sundance Model

NOTE TO CONTRACTOR:
THE USE OF THESE PLANS SHALL BE RESTRICTED TO THE ORIGINAL
PROJECT FOR WHICH THEY WERE PREPARED. ANY AMBIGUITIES,
DISCREPANCIES, INCONSISTENCIES, OR OMISSIONS ENCLOSED
SHALL BE REPORTED IMMEDIATELY TO THE ARCHITECT. FAILURE TO
NOTIFY THE ARCHITECT OF SUCH OR FAILURE TO NOTIFY THE
ARCHITECT OF CHANGES MADE FROM THEIR PLANS SHALL RELIEVE
THE ARCHITECT FROM RESPONSIBILITY FOR ALL RESULTING
CONSEQUENCES.

DATE 8.8.2019
PROJECT NO. AGS-2019
REVISIONS

MAIN FLOOR PLAN

A 1.1



1 UPPER FLOOR PLAN
A1.2 SCALE: 1/4"=1'-0"

AREAS:
UPPER LEVEL: 570 SQ. FT.

RESORT CONCEPTS
REDEFINING THE RESORT EXPERIENCE
P.O. Box 2633
27 Main St. Suite 107
Edwards, CO 81632
970.926.1720

EGGERS
ARCHITECTURE, INC.
PO BOX 798 KREMMLING, CO 80459
(970) 724-3411 CELL: (970) 409-9790
don.eggars@eggarsarchitecture.com

BORGERSON
design
P.O. Box 66
Eagle, CO 81631
970-376-1972

ASPEN GLEN

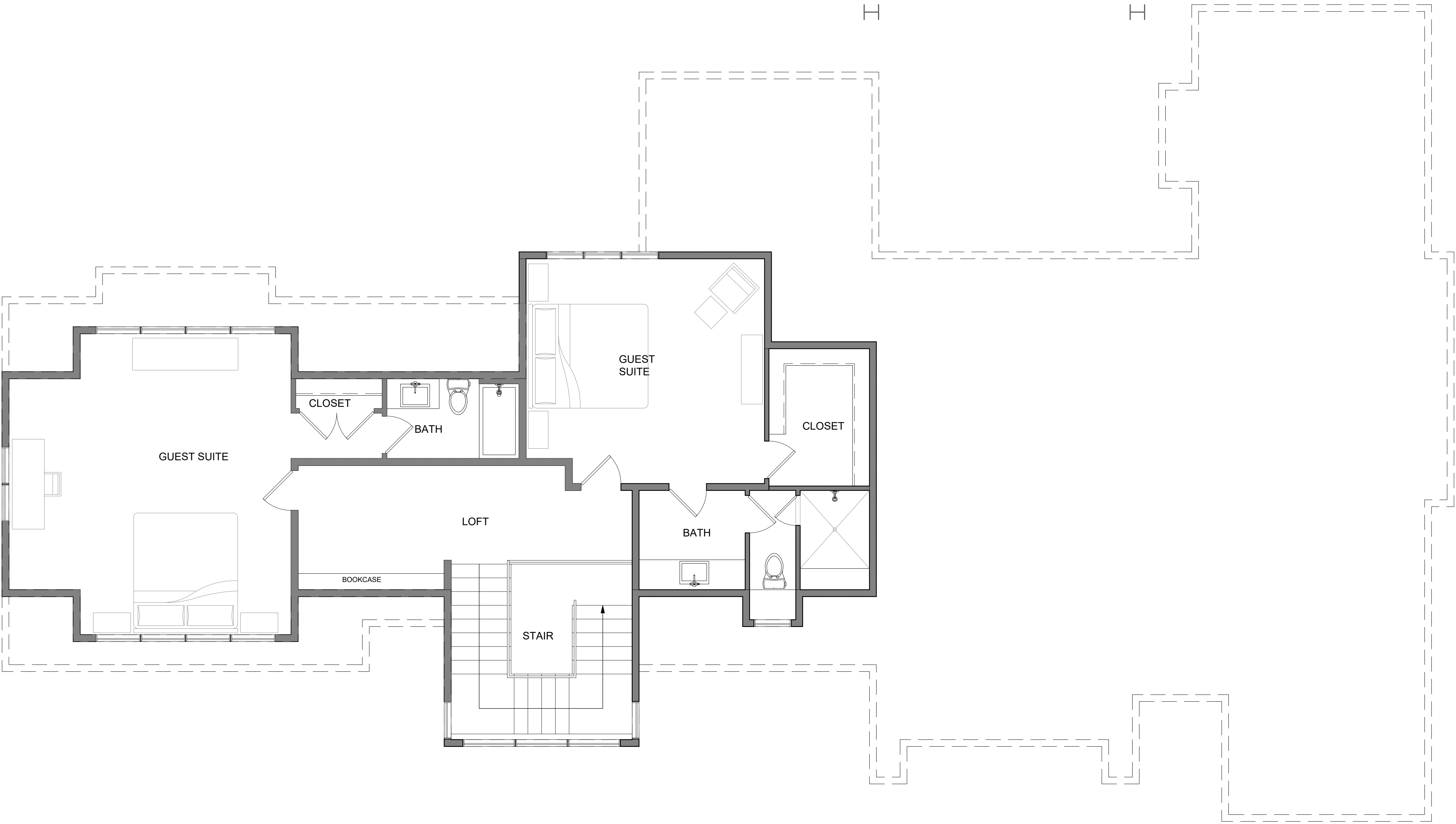
Sundance Model

NOT TO CONTRACTOR
THE USE OF THESE PLANS SHALL BE RESTRICTED TO THE ORIGINAL
PROJECT FOR WHICH THEY WERE PREPARED. ANY AMBIGUITIES,
DISCREPANCIES, INCONSISTENCIES, OR OMISSIONS ENCOUNTERED
BETWEEN THE DRAWINGS, SPECIFICATIONS, OR SET CONDITIONS
SHALL BE REPORTED IMMEDIATELY TO THE ARCHITECT. FAILURE TO
NOTIFY THE ARCHITECT OF SUCH OR FAILURE TO NOTIFY THE
ARCHITECT OF CHANGES MADE FROM THEIR PLANS SHALL RELIEVE
THE ARCHITECT FROM RESPONSIBILITY FOR ALL RESULTING
CONSEQUENCES.

DATE 8.8.2019
PROJECT NO. AGS-2019
REVISIONS

UPPER FLOOR PLAN

A 1.2



1
A1.3

OPTIONAL UPPER FLOOR PLAN
SCALE: 1/4"=1'-0"

AREAS:
UPPER LEVEL OPTION: 1131 SQ. FT.

RESORT CONCEPTS
REDEFINING THE RESORT EXPERIENCE
P.O. Box 2633
27 Main St. Suite 107
Edwards, CO 81632
970.926.1720

EGGERS
ARCHITECTURE, INC.
PO BOX 798 KREMMLING, CO 80459
(970) 724-3411 CELL: (970) 409-9790
don.eggars@eggarsarchitecture.com

BORGERSON
design
P.O. Box 66
Eagle, CO 81631
970-376-1972

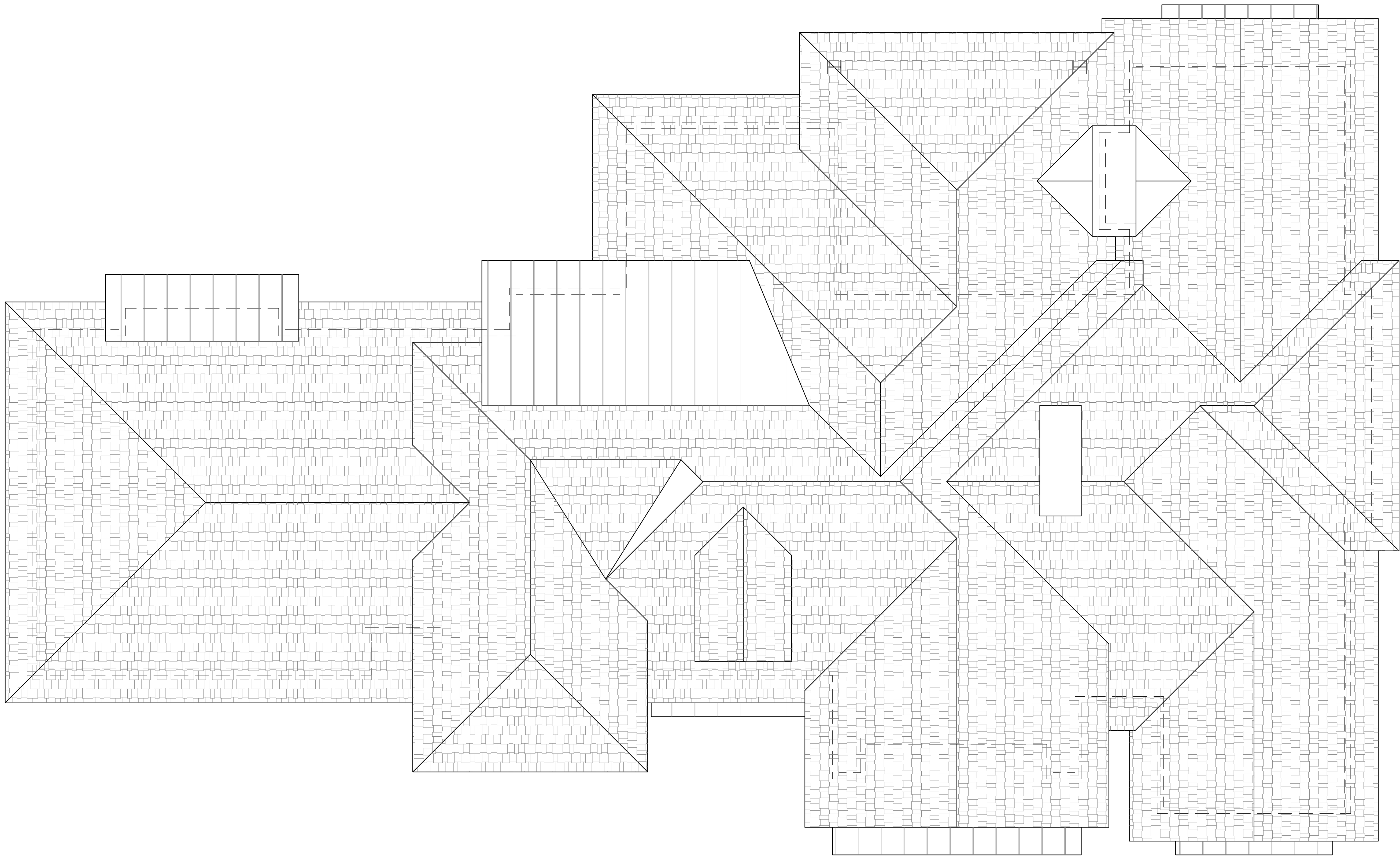
ASPEN GLEN
Sundance Model

NOT TO CONTRACTOR
THE USE OF THESE PLANS SHALL BE RESTRICTED TO THE ORIGINAL
PROJECT FOR WHICH THEY WERE PREPARED. ANY AMBIGUITIES,
DISCREPANCIES, INCONSISTENCIES, OR OMISSIONS ENCLOSED
BETWEEN THE DRAWINGS, SPECIFICATIONS, OR SET CONDITIONS
SHALL BE REPORTED IMMEDIATELY TO THE ARCHITECT. FAILURE TO
NOTIFY THE ARCHITECT OF SUCH OR FAILURE TO NOTIFY THE
ARCHITECT OF CHANGES MADE FROM THEIR PLANS SHALL RELIEVE
THE ARCHITECT FROM RESPONSIBILITY FOR ALL RESULTING
CONSEQUENCES.

DATE 8.8.2019
PROJECT NO. AGS-2019
REVISIONS

OPTIONAL
UPPER FLOOR PLAN

A 1.3



1 ROOF PLAN
A1.3 SCALE: 1/4"=1'-0"

RESORT CONCEPTS
REDEFINING THE RESORT EXPERIENCE
P.O. Box 2633
27 Main St. Suite 107
Edwards, CO 81632
970.926.1720

EGGERS
ARCHITECTURE, INC.
PO BOX 798 KREMMLING, CO 80459
(970) 724-3411 CELL: (970) 409-9790
don.eggars@eggarsarchitecture.com

BORGERSON
design
P.O. Box 66
Eagle, CO 81631
970-376-1972

ASPEN GLEN
Sundance Model

NOT TO CONSTRUCTOR
THE USE OF THESE PLANS SHALL BE RESTRICTED TO THE ORIGINAL
PROJECT FOR WHICH THEY WERE PREPARED. ANY AMBIGUITIES,
DISCREPANCIES, INCONSISTENCIES, OR OMISSIONS ENCLOSED
BETWEEN THE DRAWINGS, SPECIFICATIONS, OR SET CONDITIONS
SHALL BE REPORTED IMMEDIATELY TO THE ARCHITECT. FAILURE TO
NOTIFY THE ARCHITECT OF SUCH OR FAILURE TO NOTIFY THE
ARCHITECT OF CHANGES MADE FROM THEIR PLANS SHALL RELIEVE
THE ARCHITECT FROM RESPONSIBILITY FOR ALL RESULTING
CONSEQUENCES.

DATE 7.3.2019
PROJECT NO. AGS-2019
REVISIONS

ROOF PLAN

A 1.3

RESORT CONCEPTS
REDEFINING THE RESORT EXPERIENCE
P.O. Box 2633
27 Main St. Suite 107
Edwards, CO 81632
970.926.1720

EGGERS
ARCHITECTURE, INC.
PO BOX 798 KREMMLING, CO 80459
(970) 724-3411 CELL: (970) 409-9790
don.eggars@eggarsarchitecture.com

BORGERSON
design
P.O. Box 66
Eagle, CO 81631
970-376-1972

ASPEN GLEN
Sundance Model

NOT TO CONSTRUCTOR
THE USE OF THESE PLANS SHALL BE RESTRICTED TO THE ORIGINAL
PROJECT FOR WHICH THEY WERE PREPARED. ANY AMBIGUITIES,
DISCREPANCIES, INCONSISTENCIES, OR OMISSIONS DISCOVERED
BETWEEN THE DRAWINGS, SPECIFICATIONS, OR SET CONDITIONS
SHALL BE REPORTED IMMEDIATELY TO THE ARCHITECT. FAILURE TO
NOTIFY THE ARCHITECT OF SUCH OR FAILURE TO NOTIFY THE
ARCHITECT OF CHANGES MADE FROM THEIR PLANS SHALL RELIEVE
THE ARCHITECT FROM RESPONSIBILITY FOR ALL RESULTING
CONSEQUENCES.

DATE 8.8.2019
PROJECT NO. AGS-2019
REVISIONS

ELEVATIONS

A 2.1



1 FRONT ELEVATION
A2.1 SCALE: 1/4"=1'-0"



2 WEST ELEVATION
A2.2 SCALE: 1/4"=1'-0"



1 BACK ELEVATION
A2.2 SCALE: 1/4"=1'-0"



2 EAST ELEVATION
A2.2 SCALE: 1/4"=1'-0"

RESORT CONCEPTS
REDEFINING THE RESORT EXPERIENCE
P.O. Box 2633
27 Main St. Suite 107
Edwards, CO 81632
970.926.1720

EGGERS
ARCHITECTURE, INC.
PO BOX 798 KREMMLING, CO 80459
(970) 724-3411 CELL: (970) 409-9790
don.eggars@eggarsarchitecture.com

BORGERSON
design
P.O. Box 66
Eagle, CO 81631
970-376-1972

ASPEN GLEN

Sundance Model

NOT TO CONSTRUCTOR
THE USE OF THESE PLANS SHALL BE RESTRICTED TO THE ORIGINAL
PROJECT FOR WHICH THEY WERE PREPARED. ANY AMBIGUITIES,
DISCREPANCIES, INCONSISTENCIES, OR OMISSIONS ENCLOSED
BETWEEN THE DRAWINGS, SPECIFICATIONS, OR SET CONDITIONS
SHALL BE REPORTED IMMEDIATELY TO THE ARCHITECT. FAILURE TO
NOTIFY THE ARCHITECT OF SUCH OR FAILURE TO NOTIFY THE
ARCHITECT OF CHANGES MADE FROM THEIR PLANS SHALL RELIEVE
THE ARCHITECT FROM RESPONSIBILITY FOR ALL RESULTING
CONSEQUENCES.

DATE 8.8.2019
PROJECT NO. AGS-2019
REVISIONS

ELEVATIONS

A 2.2



1 BACK ELEVATION with OPTIONAL BEDROOM OVER GARAGE
A2.3 SCALE: 1/4"=1'-0"



2 FRONT ELEVATION with OPTIONAL BEDROOM OVER GARAGE
A2.3 SCALE: 1/4"=1'-0"



3 EAST ELEVATION with OPTIONAL BEDROOM OVER GARAGE
A2.3 SCALE: 1/4"=1'-0"

RESORT CONCEPTS
REDEFINING THE RESORT EXPERIENCE
P.O. Box 2633
27 Main St. Suite 107
Edwards, CO 81632
970.926.1720

EGGERS
ARCHITECTURE, INC.
PO BOX 798 KREMMLING, CO 80459
(970) 724-3411 CELL: (970) 409-9790
don.eggars@eggarsarchitecture.com

BORGERSON
design
P.O. Box 66
Eagle, CO 81631
970-376-1972

ASPEN GLEN

Sundance Model

NOTE TO CONTRACTOR:
THE USE OF THESE PLANS SHALL BE RESTRICTED TO THE ORIGINAL
PROJECT FOR WHICH THEY WERE PREPARED. ANY AMBIGUITIES,
DISCREPANCIES, INCONSISTENCIES, OR OMISSIONS DISCOVERED
BETWEEN THE DRAWINGS, SPECIFICATIONS, OR SET CONDITIONS
SHALL BE REPORTED IMMEDIATELY TO THE ARCHITECT. FAILURE TO
NOTIFY THE ARCHITECT OF SUCH OR FAILURE TO NOTIFY THE
ARCHITECT OF CHANGES MADE FROM THEIR PLANS SHALL RELIEVE
THE ARCHITECT FROM RESPONSIBILITY FOR ALL RESULTING
CONSEQUENCES.

DATE 8.8.2019
PROJECT NO. AGS-2019
REVISIONS

OPTIONAL
ELEVATIONS

A 2.3