



1 MAIN FLOOR PLAN
 A1.1 SCALE: 1/4"=1'-0"

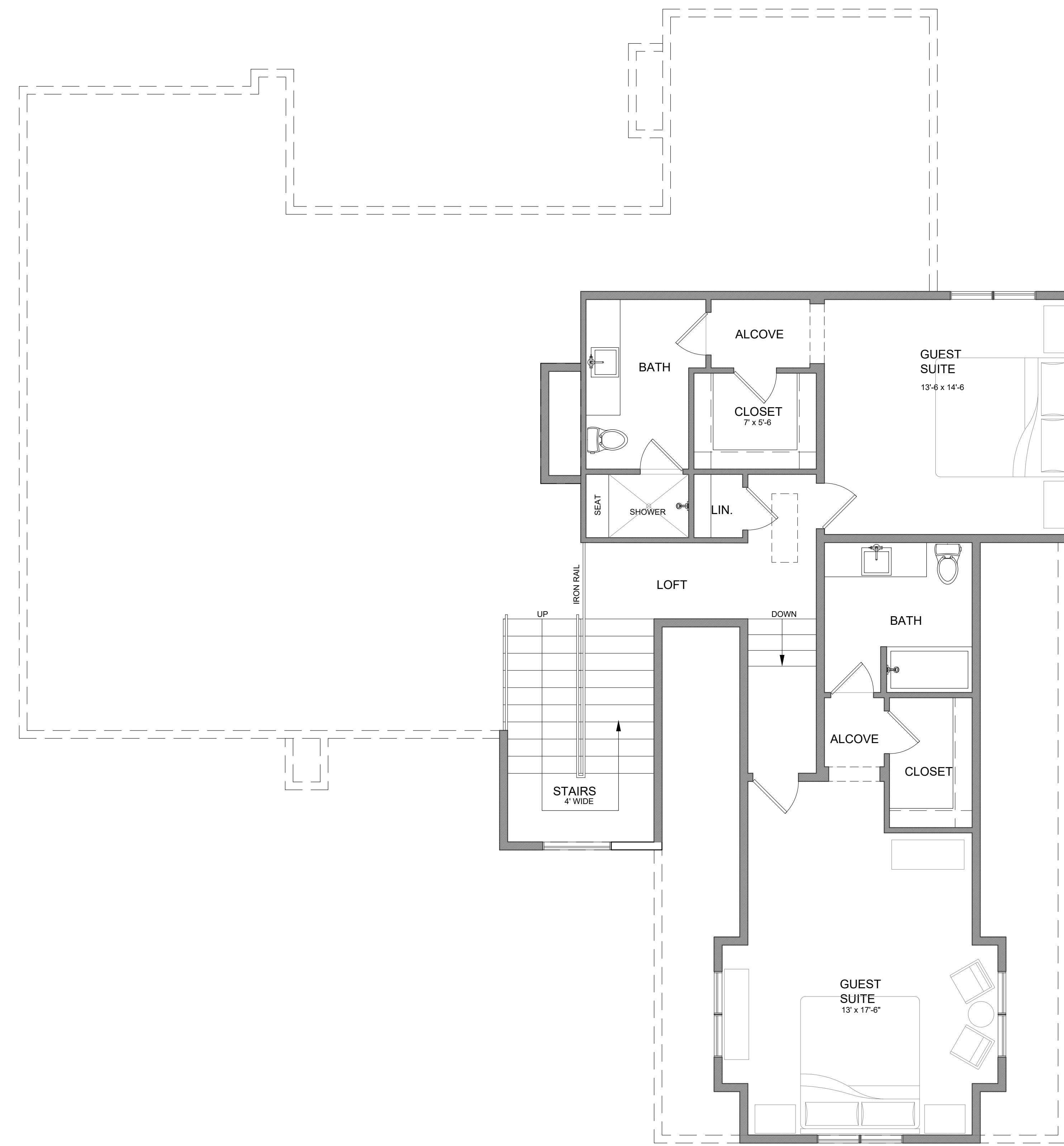
AREAS:
 MAIN LEVEL: 2128 SQ. FT.
 GARAGE: 679 SQ. FT.

ASPEN GLEN
 Alpenglou Model

NOTE TO CONTRACTOR:
 THE USE OF THESE PLANS SHALL BE RESTRICTED TO THE ORIGINAL PROJECT FOR WHICH THEY WERE PREPARED. ANY AMBIGUITIES, OMISSIONS, INCONSISTENCIES, OR ERRORS, ENCLOSED BETWEEN THE DRAWINGS, SPECIFICATIONS, OR SET CONDITIONS SHALL BE REPORTED IMMEDIATELY TO THE ARCHITECT. FAILURE TO NOTIFY THE ARCHITECT OF SUCH OR FAILURE TO NOTIFY THE ARCHITECT OF CHANGES MADE FROM THEIR PLANS SHALL RELIEVE THE ARCHITECT FROM RESPONSIBILITY FOR ALL RESULTING CONSEQUENCES.

DATE 8.19.2019
 PROJECT NO. AGP-2019
 REVISIONS

ASPEN GLEN
 Alpenglöw Model



AREAS:
 UPPER LEVEL: 1052 SQ. FT.

1 UPPER FLOOR PLAN
 A1.2 SCALE: 1/4"=1'-0"

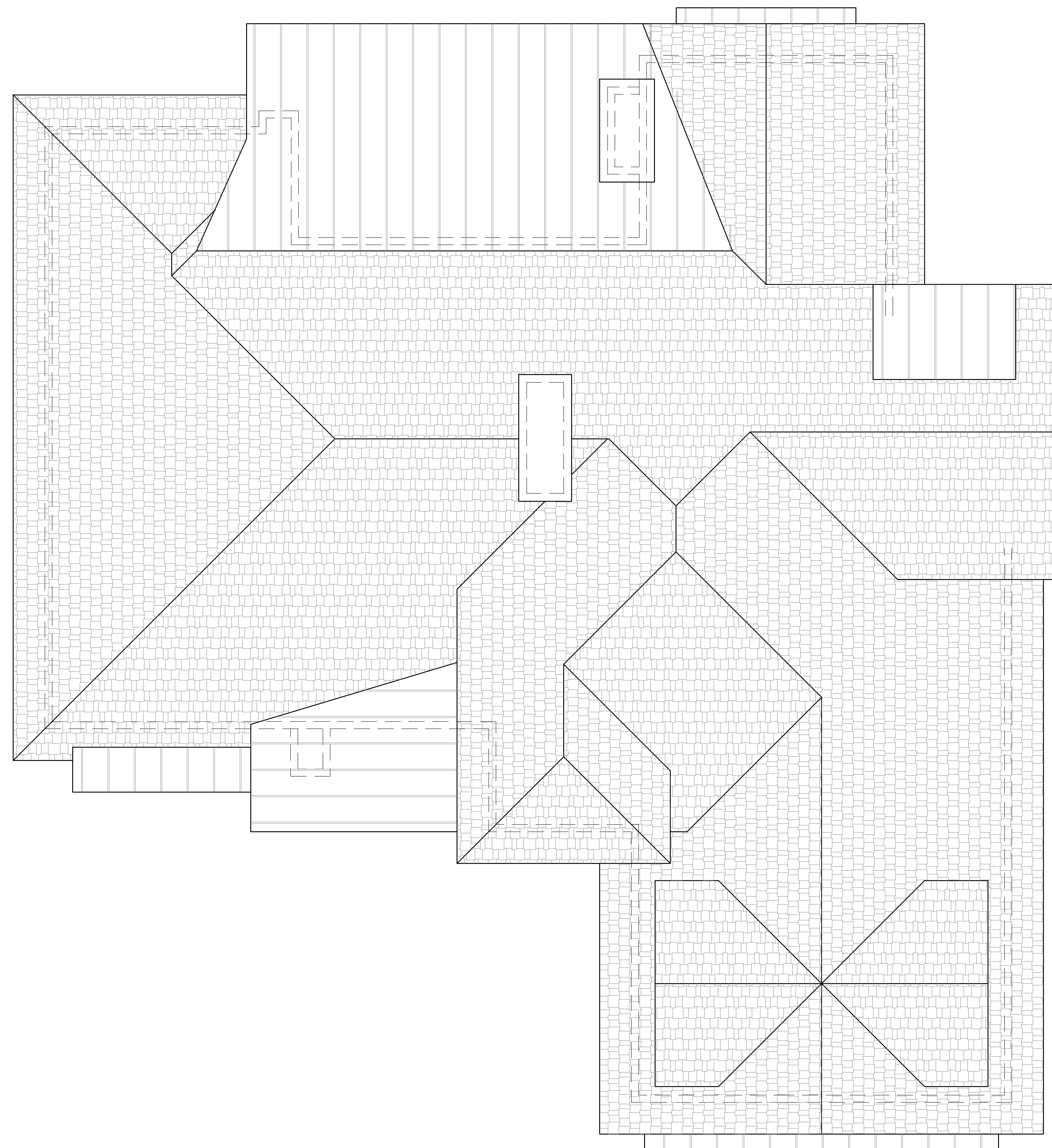
NOTE TO CONTRACTOR:
 THE USE OF THESE PLANS SHALL BE RESTRICTED TO THE ORIGINAL PROJECT FOR WHICH THEY WERE PREPARED. ANY AMBIGUITIES, INCONSISTENCIES, INCOMPLETIONS, OR OMISSIONS ENCOUNTERED BETWEEN THE DRAWINGS, SPECIFICATIONS, OR SET CONDITIONS SHALL BE REPORTED IMMEDIATELY TO THE ARCHITECT. FAILURE TO NOTIFY THE ARCHITECT OF SUCH OR FAILURE TO NOTIFY THE ARCHITECT OF CHANGES MADE FROM THESE PLANS SHALL RELIEVE THE ARCHITECT FROM RESPONSIBILITY FOR ALL RESULTING CONSEQUENCES.

DATE 8.19.2019
 PROJECT NO. AGP-2019
 REVISIONS

RESORT CONCEPTS
REDEFINING THE RESORT EXPERIENCE
P.O. Box 2633
27 Main St. Suite 107
Edwards, CO 81632
970.926.1720

EGGERS
ARCHITECTURE, INC.
PO BOX 798 KREMMLING, CO 80459
(970) 724-3411 CELL: (970) 409-9790
don.eggars@eggarsarchitecture.com

BORGERSON
design
P.O. Box 66
Eagle, CO 81631
970-376-1972



ASPEN GLEN
Alpenglow Model

NOTE TO CONTRACTOR:
THE USE OF THESE PLANS SHALL BE RESTRICTED TO THE ORIGINAL
PROJECT FOR WHICH THEY WERE PREPARED. ANY AMBIGUITIES,
DISCREPANCIES, INCONSISTENCIES, OR OMISSIONS ENCLOSED
BETWEEN THE DRAWINGS, SPECIFICATIONS, OR SET CONDITIONS
SHALL BE REPORTED IMMEDIATELY TO THE ARCHITECT. FAILURE TO
NOTIFY THE ARCHITECT OF SUCH OR FAILURE TO NOTIFY THE
ARCHITECT OF CHANGES MADE FROM THESE PLANS SHALL RELIEVE
THE ARCHITECT FROM RESPONSIBILITY FOR ALL RESULTING
CONSEQUENCES.

DATE 8.19.2019
PROJECT NO. AGP-2019
REVISIONS

1 ROOF PLAN
A1.3 SCALE: 1/4"=1'-0"

ROOF PLAN

A 1.3

RESORT CONCEPTS
REDEFINING THE RESORT EXPERIENCE
P.O. Box 2633
27 Main St. Suite 107
Edwards, CO 81632
970.926.1720

EGGERS
ARCHITECTURE, INC.
PO BOX 798 KREMMLING, CO 80459
(970) 724-3411 CELL: (970) 409-9790
don.eggars@eggarsarchitecture.com

BORGERSON
design
P.O. Box 66
Eagle, CO 81631
970-376-1972



1 FRONT ELEVATION
A2.1 SCALE: 1/4"=1'-0"



2 SIDE ELEVATION
A2.1 SCALE: 1/4"=1'-0"

ASPEN GLEN
Alpenglow Model

NOTE TO CONTRACTOR:
THE USE OF THESE PLANS SHALL BE RESTRICTED TO THE ORIGINAL
PROJECT FOR WHICH THEY WERE PREPARED. ANY AMBIGUITIES,
DISCREPANCIES, INCONSISTENCIES, OR OMISSIONS ENCLOSED
HEREIN SHALL BE REPORTED IMMEDIATELY TO THE ARCHITECT. FAILURE TO
NOTIFY THE ARCHITECT OF SUCH OR FAILURE TO NOTIFY THE
ARCHITECT OF CHANGES MADE FROM THESE PLANS SHALL RELIEVE
THE ARCHITECT FROM RESPONSIBILITY FOR ALL RESULTING
CONSEQUENCES.

DATE 8.19.2019
PROJECT NO. AGP-2019
REVISIONS

ELEVATIONS
A 2.1

RESORT CONCEPTS
 REDEFINING THE RESORT EXPERIENCE
 P.O. Box 2633
 27 Main St. Suite 107
 Edwards, CO 81632
 970.926.1720

EGGERS
 ARCHITECTURE, INC.
 PO BOX 798 KREMMLING, CO 80459
 (970) 724-3411 CELL: (970) 409-9790
 don.eggars@eggarsarchitecture.com

BORGERSON
 design
 P.O. Box 66
 Eagle, CO 81631
 970-376-1972



1 BACK ELEVATION
 A2.2 SCALE: 1/4"=1'-0"



2 SIDE ELEVATION
 A2.2 SCALE: 1/4"=1'-0"

ASPEN GLEN
 Alpenglow Model

NOTE TO CONTRACTOR:
 THE USE OF THESE PLANS SHALL BE RESTRICTED TO THE ORIGINAL
 PROJECT FOR WHICH THEY WERE PREPARED. ANY AMBIGUITIES,
 INCONSISTENCIES, INCOMPLETIONS, OR OMISSIONS ENCLOSED
 BETWEEN THE DRAWINGS, SPECIFICATIONS, OR SITE CONDITIONS
 SHALL BE REPORTED IMMEDIATELY TO THE ARCHITECT. FAILURE TO
 NOTIFY THE ARCHITECT OF SUCH OR FAILURE TO NOTIFY THE
 ARCHITECT OF CHANGES MADE FROM THESE PLANS SHALL RELIEVE
 THE ARCHITECT FROM RESPONSIBILITY FOR ALL RESULTING
 CONSEQUENCES.

DATE 8.19.2019
 PROJECT NO. AGP-2019
 REVISIONS

ELEVATIONS

A 2.2