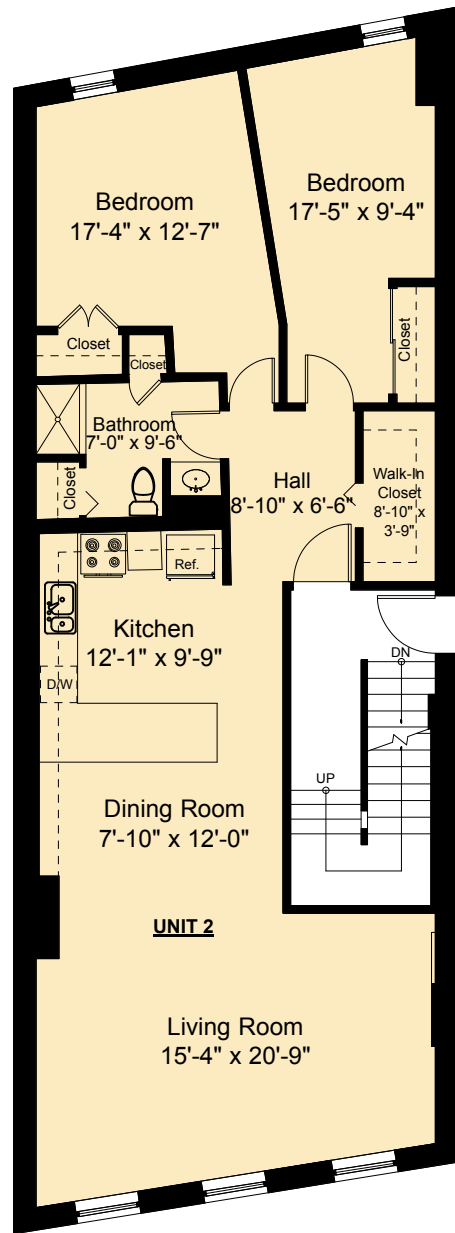


First Floor Plan
 Unit 1 = 902 SF
 Ceiling Height = 8'-11"



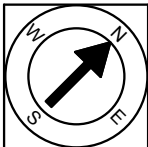
Second Floor Plan
 Unit 2 = 1,054
 Ceiling Height = 8'-3"

150 Commercial Street
 Boston, MA 02109



Scale 1" = 10'-0"

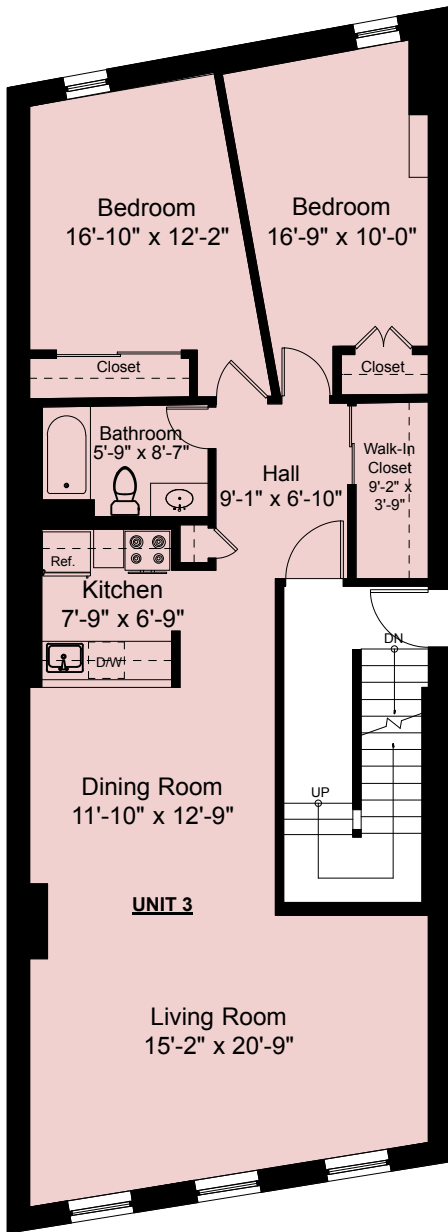
1



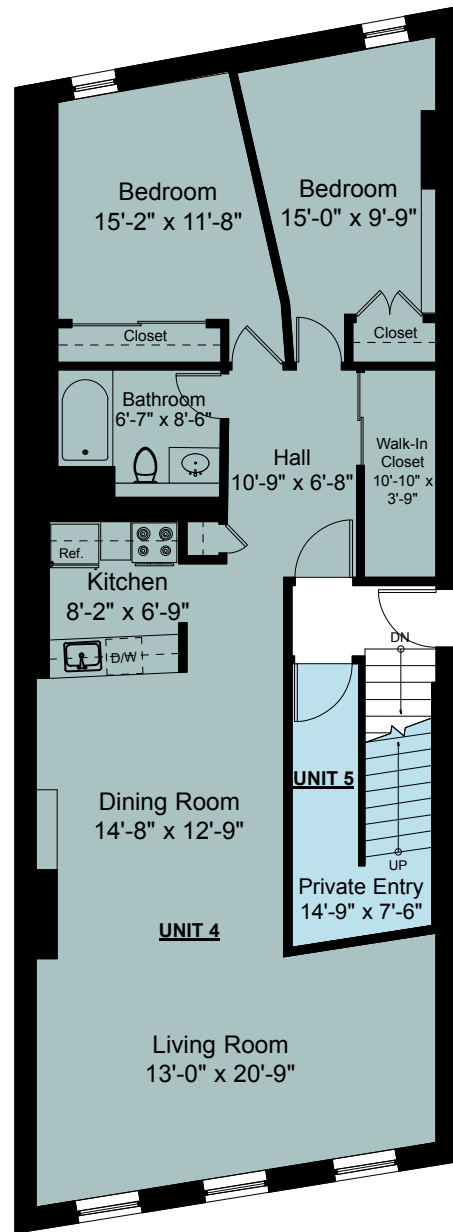
Provided by:
 Jonathan P. Radford
 1-617-335-1010 - Jonathan@JonathanRadford.com
 www.JonathanRadford.com
 Coldwell Banker Global Luxury
 399 Boylston Street, Boston MA 02116



GLOBAL LUXURY™



Third Floor Plan
 Unit 3 = 1,054 SF
 Ceiling Height = 7'-7"



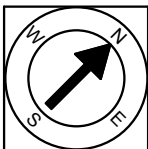
Fourth Floor Plan
 Unit 4 = 1,045 SF
 Ceiling Height = 7'-0"

150 Commercial Street
 Boston, MA 02109



Scale 1" = 10'-0"

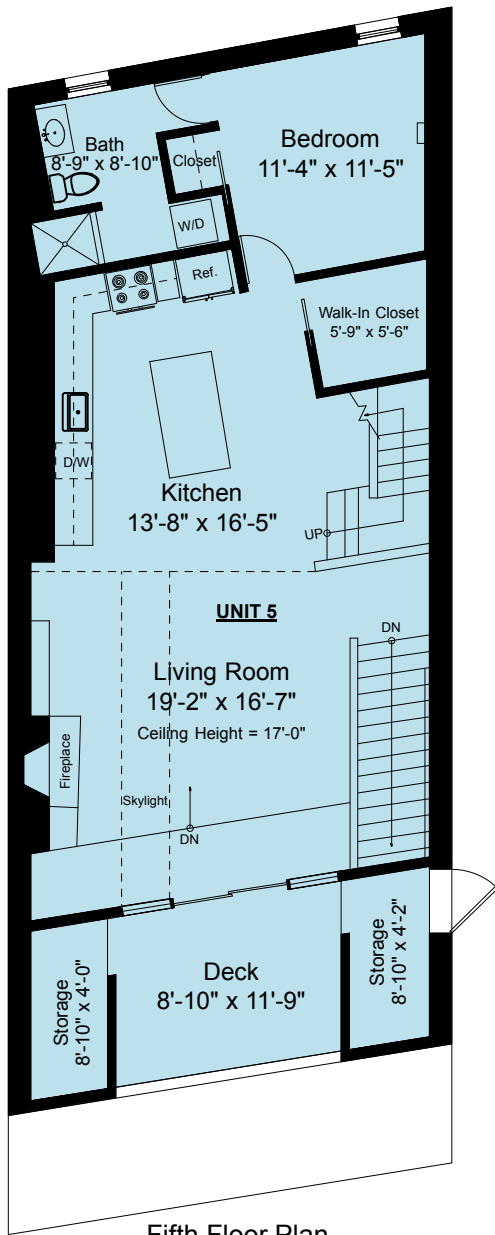
2



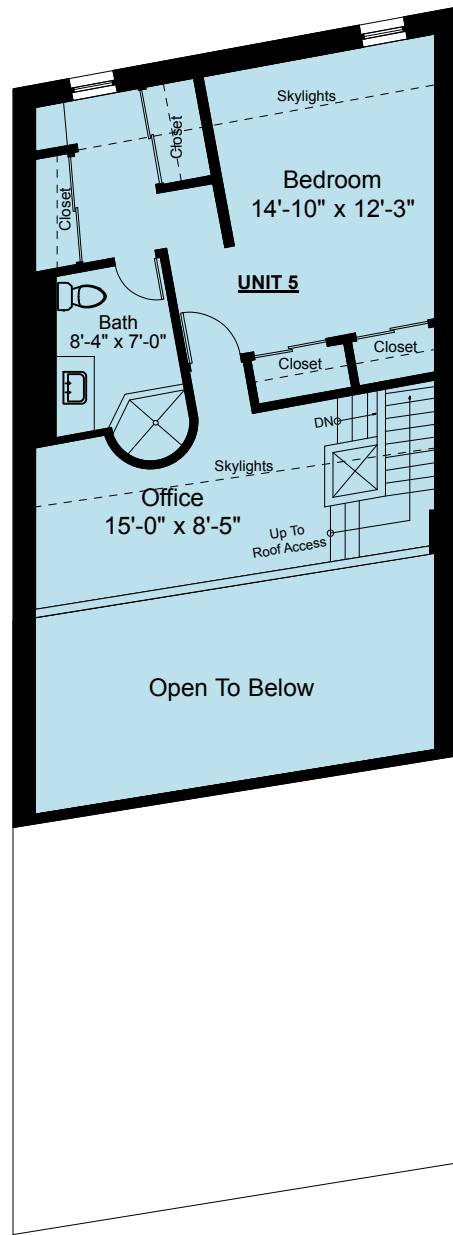
Provided by:
 Jonathan P. Radford
 1-617-335-1010 - Jonathan@JonathanRadford.com
www.JonathanRadford.com
 Coldwell Banker Global Luxury
 399 Boylston Street, Boston MA 02116



GLOBAL LUXURY



Fifth Floor Plan
 Unit 5 = 1,519 SF
 Ceiling Height = 7'-1"



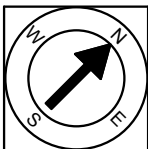
Sixth Floor Plan
 Unit 5 = 1,519 SF
 Ceiling Height = 7'-9"

150 Commercial Street
 Boston, MA 02109



Scale 1" = 10'-0"

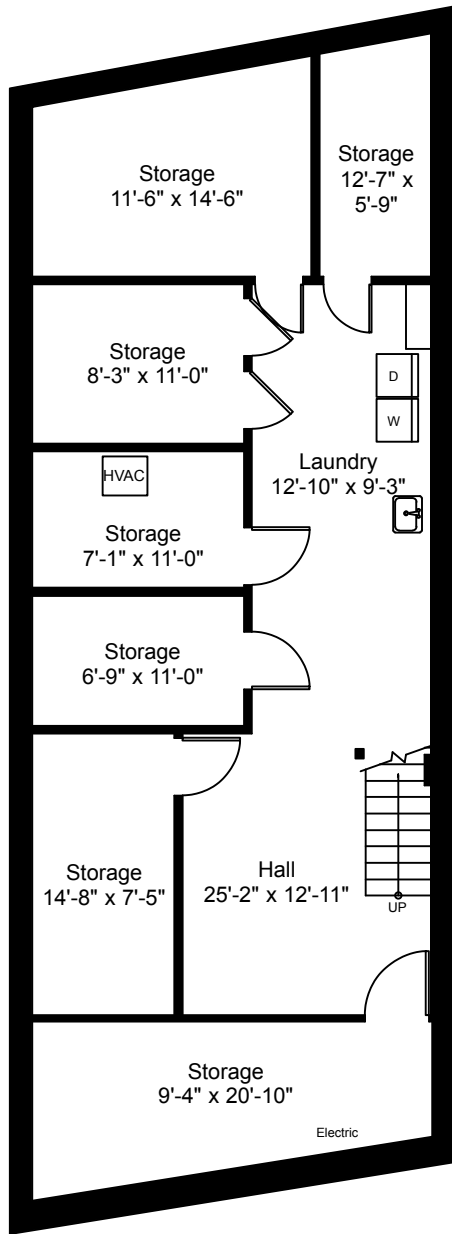
3



Provided by:
 Jonathan P. Radford
 1-617-335-1010 - Jonathan@JonathanRadford.com
 www.JonathanRadford.com
 Coldwell Banker Global Luxury
 399 Boylston Street, Boston MA 02116



GLOBAL LUXURYSM



Basement Plan
Ceiling Height = 6'-2"

KEY	UNIT	SQUARE FOOTAGE
	UNIT 1	902 SF
	UNIT 2	1,054 SF
	UNIT 3	1,054 SF
	UNIT 4	1,045 SF
	UNIT 5	1,519 SF
	COMMON AREA	2,345 SF
	TOTAL GROSS LIVING AREA	6,623 SF
	TOTAL GROSS BUILDING AREA	7,919 SF

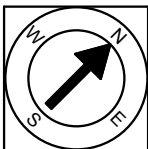
Note: Dimensions are not guaranteed and are provided for informational purposes only. Individual room dimensions are not used to calculate overall square footage.

150 Commercial Street
Boston, MA 02109



Scale 1" = 10'-0"

4



Provided by:
Jonathan P. Radford
1-617-335-1010 - Jonathan@JonathanRadford.com
www.JonathanRadford.com
Coldwell Banker Global Luxury
399 Boylston Street, Boston MA 02116



GLOBAL
LUXURY™