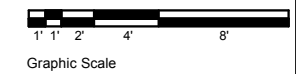
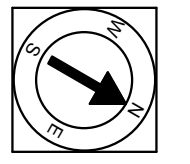


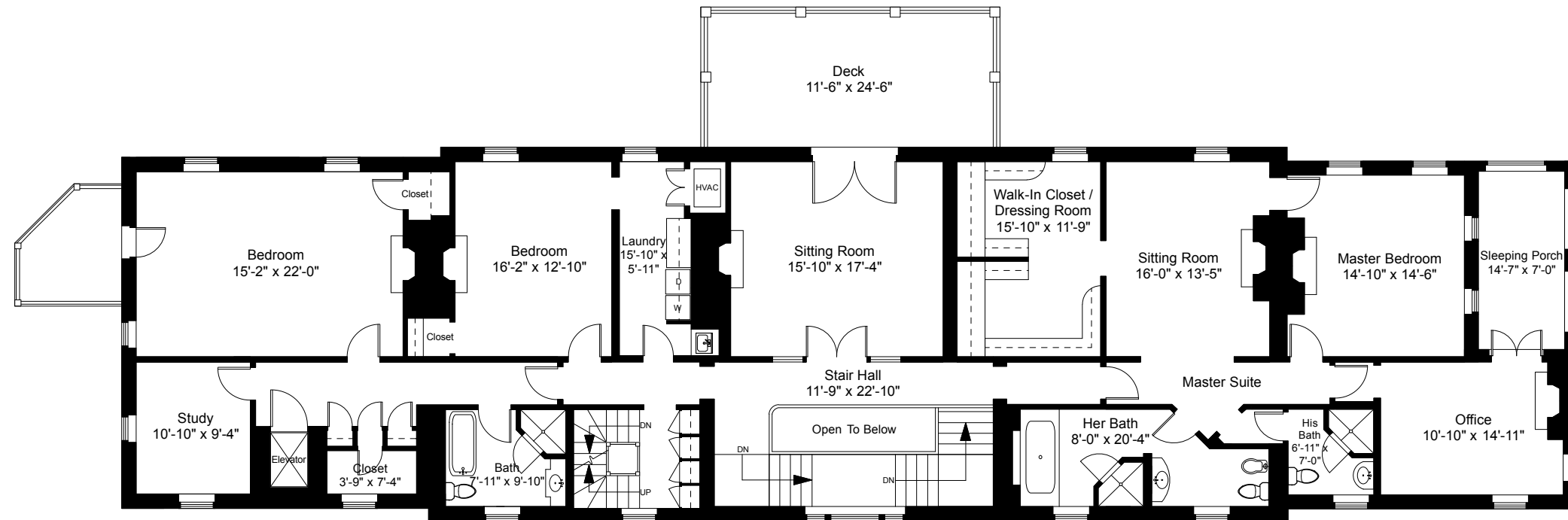
254 Westfield Street  
Dedham, MA 02026



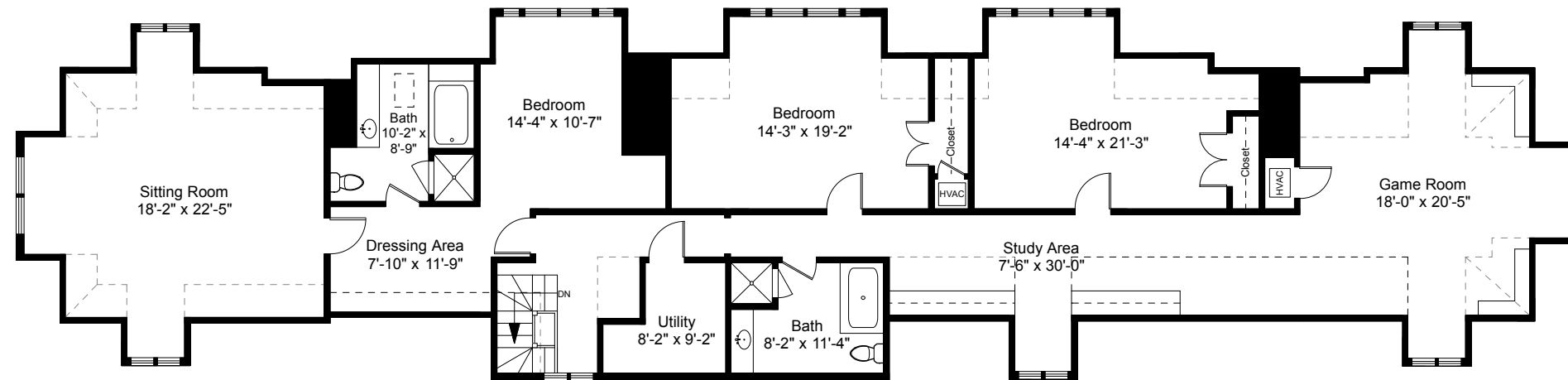
Provided by:  
Jonathan P. Radford  
Jonathan@JonathanRadford.com  
www.JonathanRadford.com  
Coldwell Banker Global Luxury  
399 Boylston Street, Boston MA 02116

Note: Dimensions are no guaranteed and are provided for informational purposes only. Individual room dimensions are not used to calculate overall square footage.



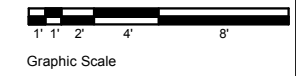


Main Residence | Second Floor Plan  
Ceiling Height = 8'-6"



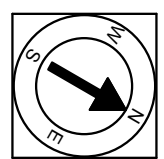
Main Residence | Third Floor Plan  
Ceiling Height = 7'-10"

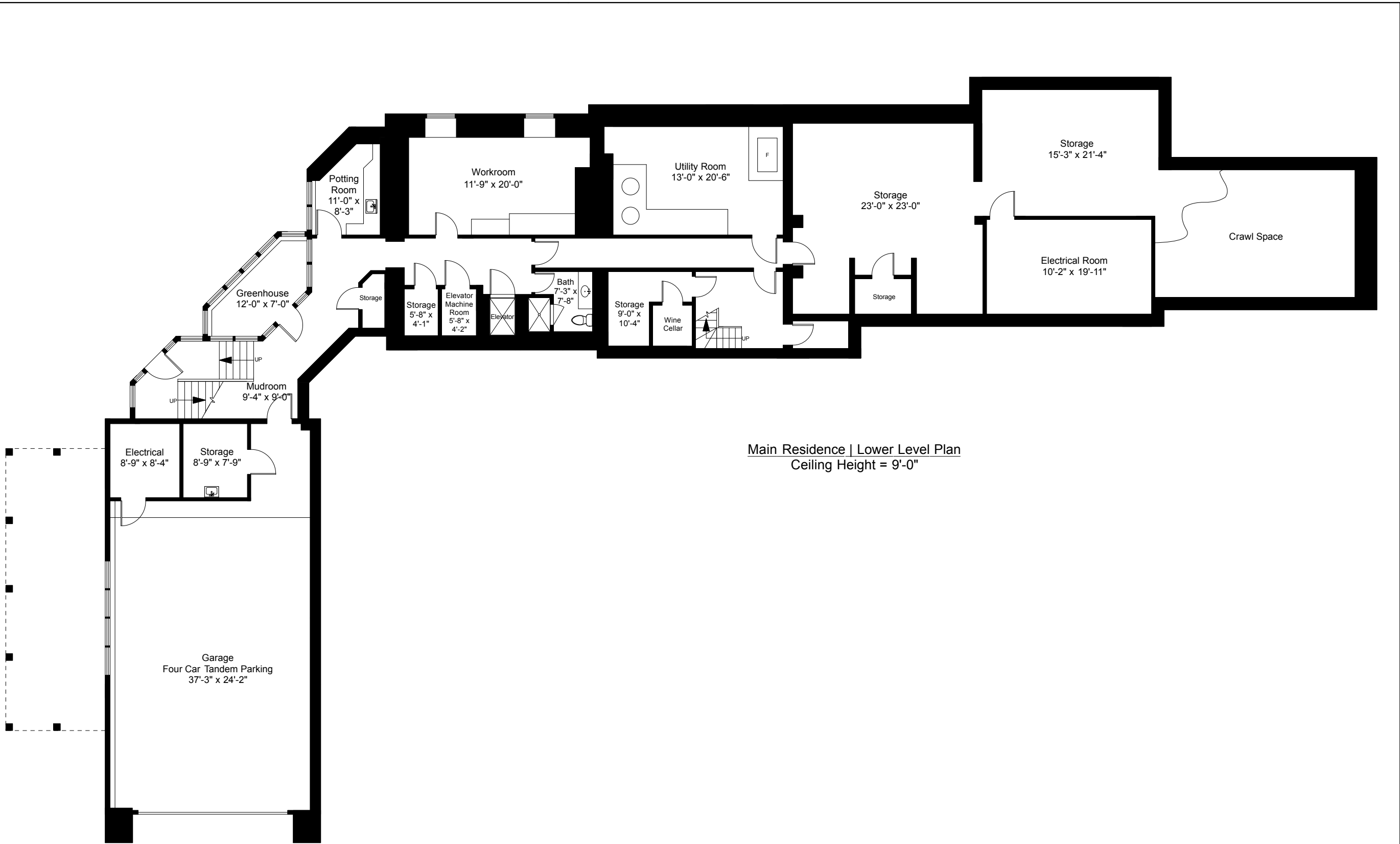
254 Westfield Street  
Dedham, MA 02026



Provided by:  
Jonathan P. Radford  
Jonathan.P.Radford@JonathanRadford.com  
www.JonathanRadford.com  
Coldwell Banker Global Luxury  
399 Boylston Street, Boston MA 02116

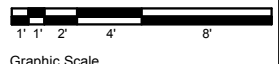
Note: Dimensions are not guaranteed and are provided for informational purposes only. Individual room dimensions are not used to calculate overall square footage.





Main Residence | Lower Level Plan  
 Ceiling Height = 9'-0"

254 Westfield Street  
 Dedham, MA 02026



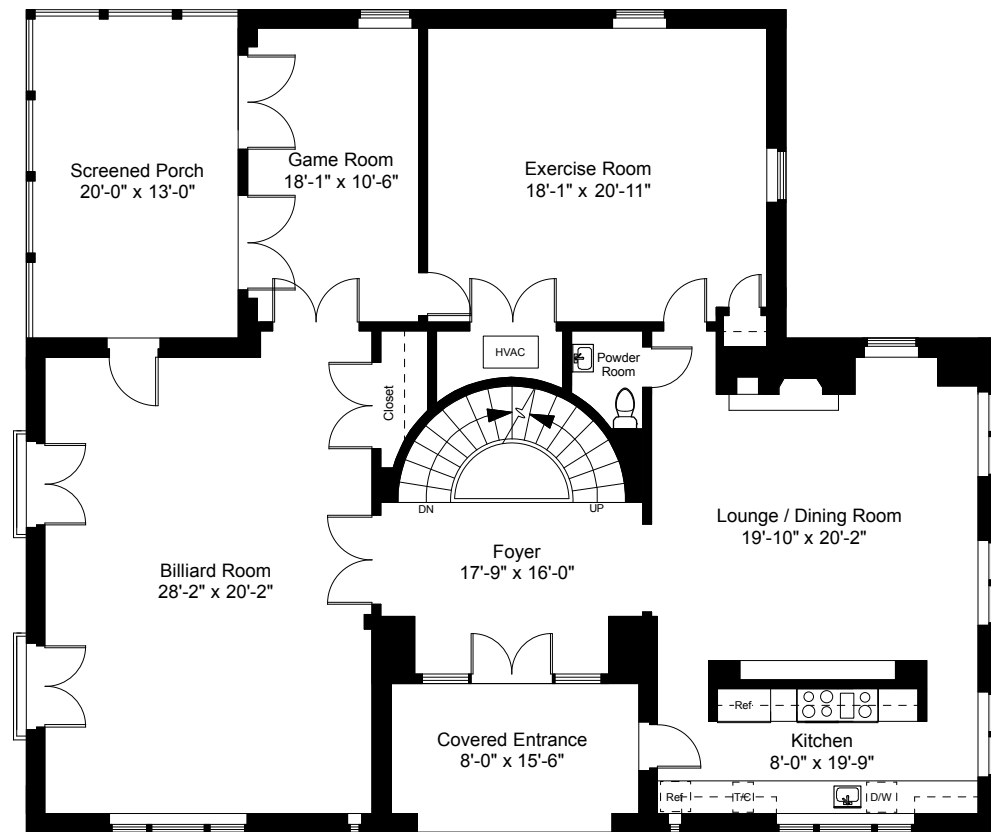
GLOBAL LUXURY.



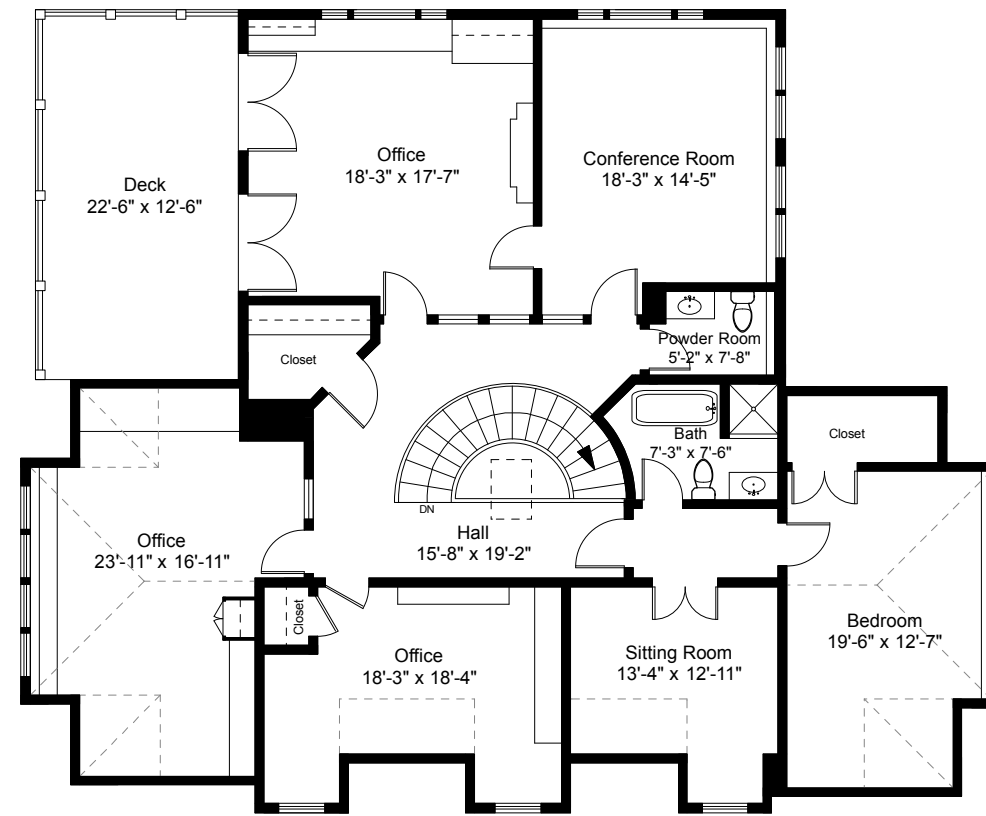
Provided by:  
 Jonathan P. Radford  
 1-817-335-1010 - Jonathan@JonathanRadford.com  
 www.JonathanRadford.com  
 Coldwell Banker Global Luxury  
 399 Boylston Street, Boston MA 02116

Note: Dimensions are not guaranteed and are provided for informational purposes only. Individual room dimensions are not used to calculate overall square footage.



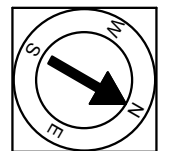
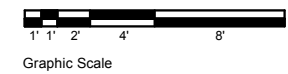


Carriage House | First Floor Plan  
Ceiling Height = 9'-0"



Carriage House | Second Floor Plan  
Ceiling Height = 10'-9"

254 Westfield Street  
Dedham, MA 02026



4

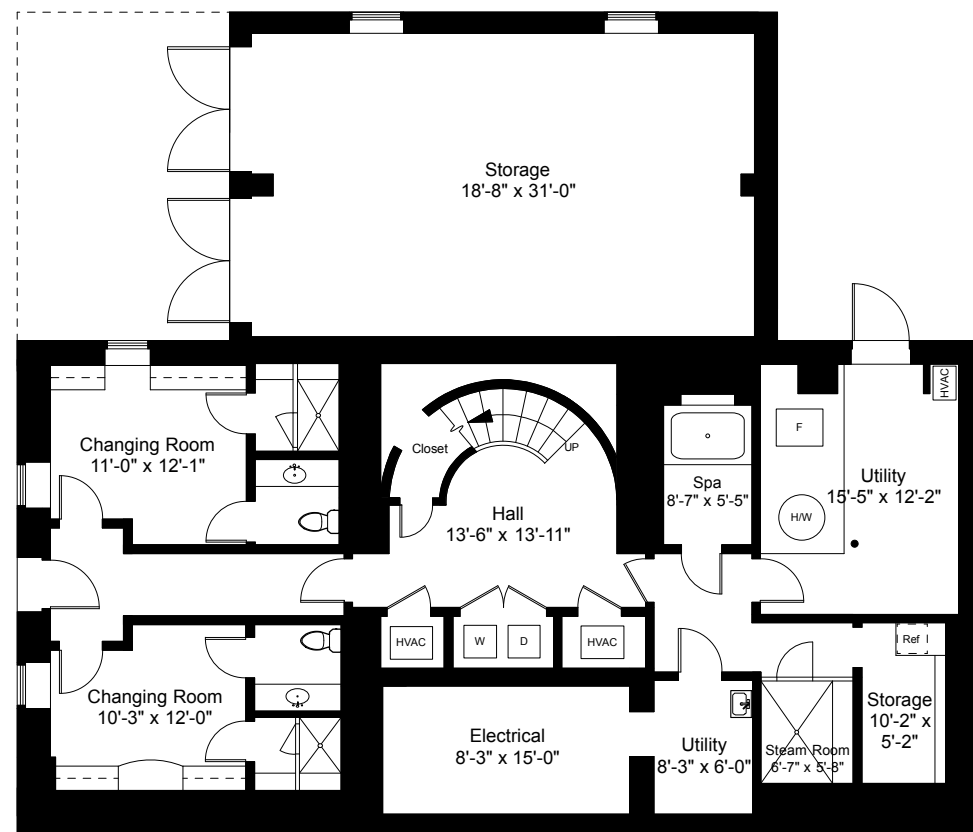
Note: Dimensions are not guaranteed and are provided for informational purposes only. Individual room dimensions are not used to calculate overall square footage.

Provided by:  
Jonathan P. Radford  
1-617-335-1010 - Jonathan@JonathanRadford.com  
www.JonathanRadford.com  
Coldwell Banker Global Luxury  
399 Boylston Street, Boston MA 02116

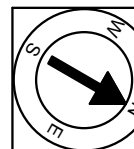
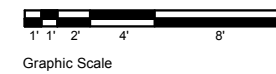


GLOBAL LUXURY.

254 Westfield Street  
Dedham, MA 02026

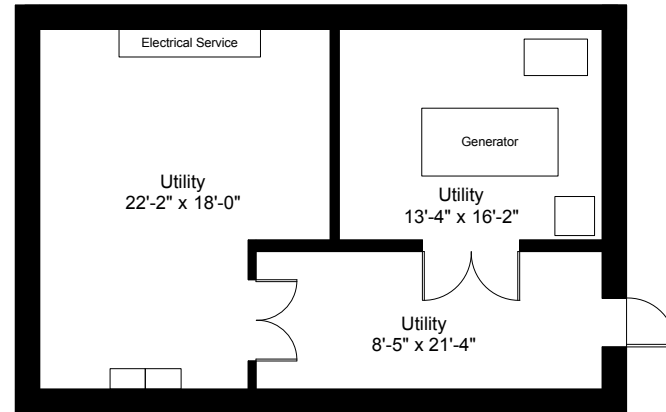


Carriage House | Lower Level Plan  
Ceiling Height = 7'-0"

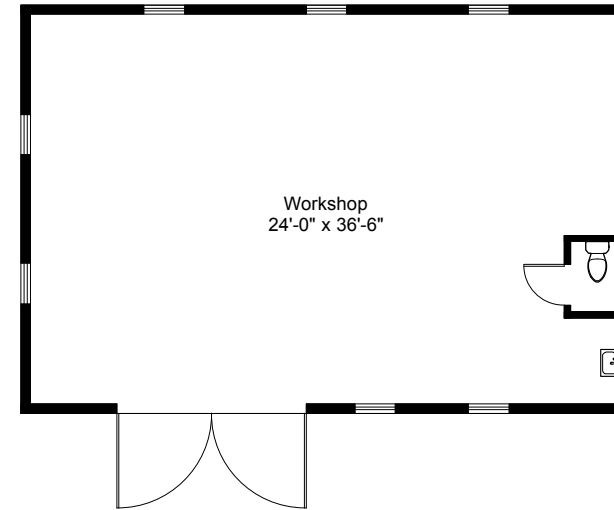


Note: Dimensions are not guaranteed and are provided for informational purposes only. Individual room dimensions are not used to calculate overall square footage.

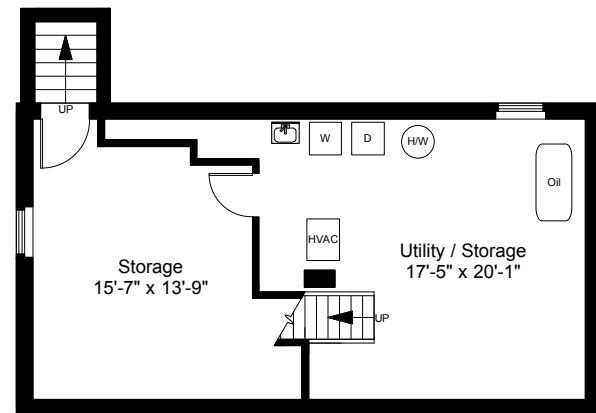
Provided by:  
Jonathan P. Radford  
1-617-335-1010 - Jonathan@JonathanRadford.com  
www.JonathanRadford.com  
Coldwell Banker Global Luxury  
399 Boylston Street, Boston MA 02116



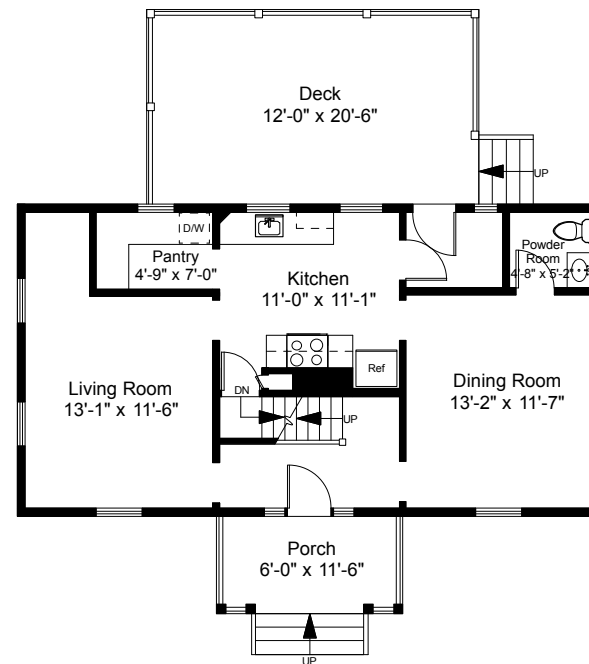
Utility Building | Lower Level Plan  
Ceiling Height = 9'-5"



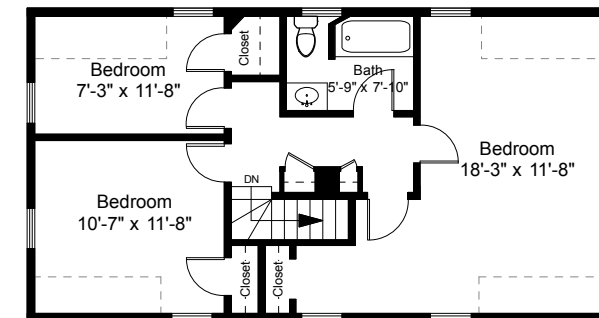
Utility Building | First Floor Plan  
Ceiling Height = 11'-0"



Gate House | Basement Plan  
Ceiling Height = 7'-6"

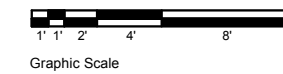


Gate House | First Floor Plan  
Ceiling Height = 7'-6"



Gate House | Second Floor Plan  
Ceiling Height = 6'-11"

254 Westfield Street  
Dedham, MA 02026



GLOBAL LUXURY.



Provided by:  
Jonathan P. Radford  
Jonathan@JonathanRadford.com  
www.JonathanRadford.com  
Coldwell Banker Global Luxury  
399 Boylston Street, Boston MA 02116

Note: Dimensions are not guaranteed and are provided for informational purposes only. Individual room dimensions are not used to calculate overall square footage.

