

Sotheby's

INTERNATIONAL REALTY



DENMARK, LOT #4 | SONOMA

\$2,595,000

WWW.DENMARKVALLEYESTATES.COM



DANIEL CASABONNE
707.494.3130
WWW.DANIELCASABONNE.COM
DANIEL@CASABONNEREALESTATE.COM
DRE 01221013



GINGER MARTIN
415.516.3939
WWW.GINGERMARTIN.COM
GINGER@GINGERMARTIN.COM
DRE 00643485



PROPERTY OVERVIEW:

- APN 126-011-031
- 4.58 ± acres
- Level parcel
- Zoning- AR5 (Agricultural & Residential)
- Private well
- Paved road to parcel
- Underground electrical to site
- Standard Septic - 4/5 bedrooms
- Breathtaking views of vineyards and hillsides
- Minutes to Sonoma Plaza





www.DanielCasabonne.com

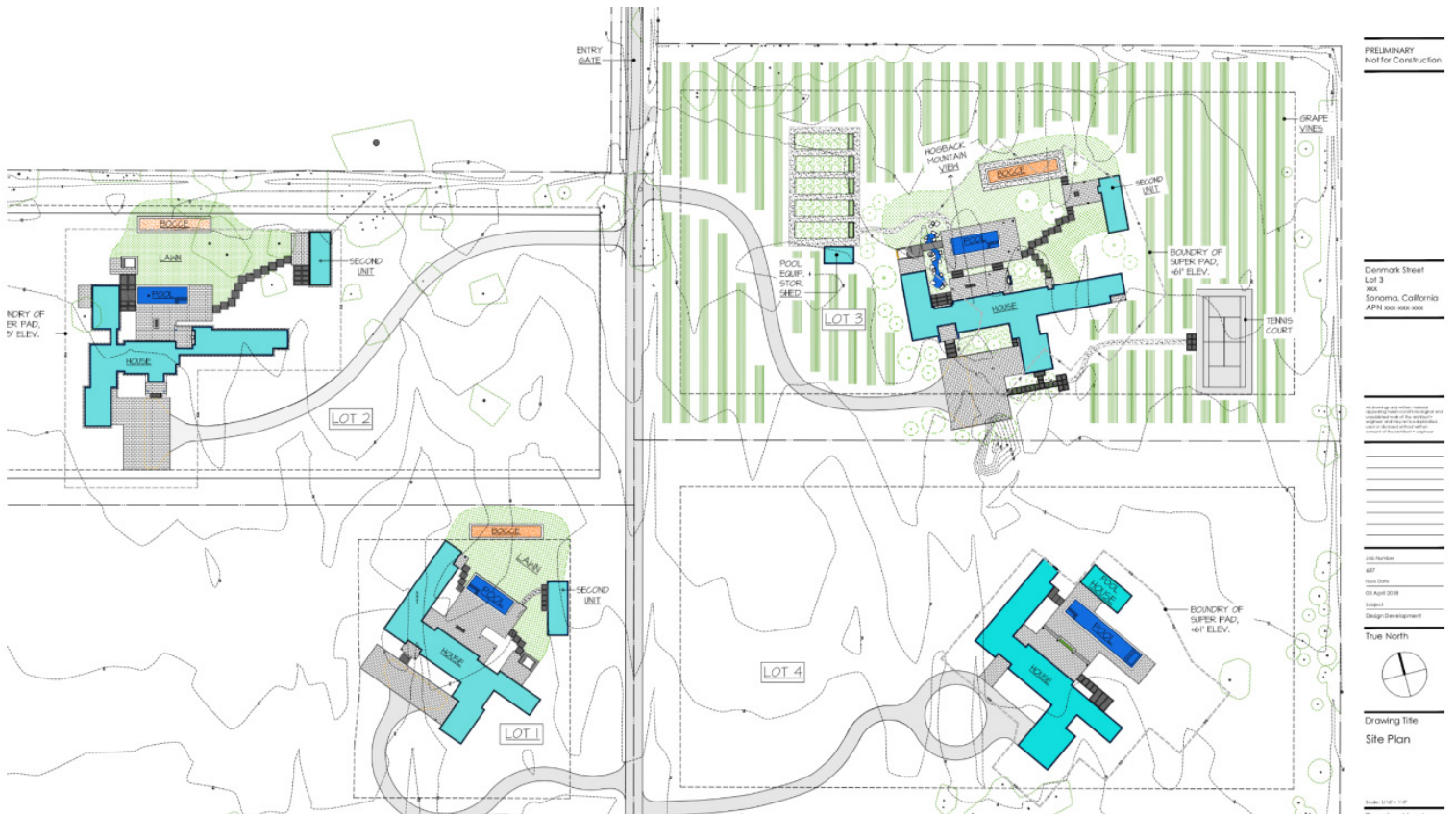
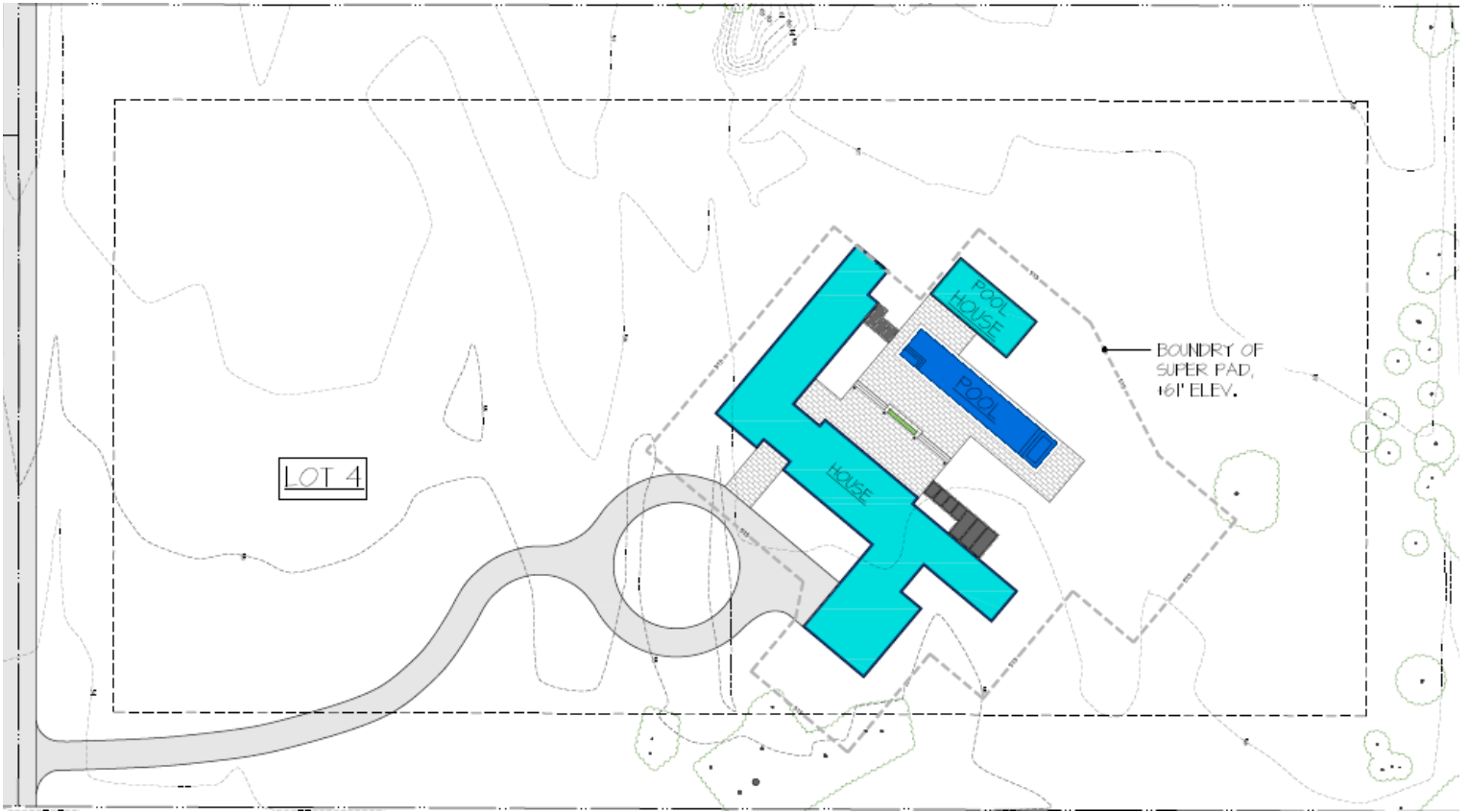
www.GingerMartin.com

THIS MATERIAL IS BASED UPON INFORMATION, WHICH WE CONSIDER RELIABLE, BUT IT HAS BEEN SUPPLIED BY THIRD PARTIES. WE CANNOT REPRESENT THAT IT IS ACCURATE OR COMPLETE, AND IT SHOULD NOT BE RELIED UPON AS SUCH. THIS OFFERING IS SUBJECT TO ERRORS, OMISSIONS, CHANGE OF PRICE OR WITHDRAWAL WITHOUT NOTICE.
© MCMXCVIII Sotheby's International Realty, Inc. EQUAL HOUSING OPPORTUNITY.

DENMARK, LOT #4 | SONOMA
WWW.DENMARKVALLEYESTATES.COM



Gorgeous level 4.58 +/- acre lot with vineyard views just blocks away from Historic Sonoma Plaza. Let us help you develop your dream home with plans from award winning architect Clare Walton. There is potential for plans to build a 5,400 square foot house and guest house, pool and gorgeous grounds. Huge opportunity to own your own fabulous estate on the East Side of Sonoma. Rarely can you find vacant beautiful lots of this caliber so close to town.





APN 126-011-031



Source: The dataset consists of filtered orthophoto imagery produced from raw images captured by
 Pleiades International. (Spring 2018)
 Credits: Pleiades International and County of Sonoma CA 2018 Acquisition Project
 Survey Information: Horizontal Datum - NAD83 (2011 Adjustment), California State Plane Zone 8
 GPM3, SACS; Vertical Datum - NAVD83, Mean TSM, Units - US Survey Feet
 Parcel Date: May 28, 2018

2018 Ortho Imagery

County of Sonoma

Permit and Resource Management Department



2550 Ventura Avenue, Santa Rosa, California 95403

