



GINGER MARTIN & CO
LUXURY REAL ESTATE | SONOMA & NAPA VALLEY

5722 COTTAGE RIDGE | MAYACAMA GOLF COURSE

OFFERING PRICE: \$3,950,000

www.5722cottageridgeroad.com

Sotheby's
INTERNATIONAL REALTY

GINGER MARTIN
415.516.3939
GINGER@GINGERMARTIN.COM
WWW.GINGERMARTIN.COM
CABRE#00643485



5722 COTTAGE RIDGE | MAYACAMA GOLF COURSE, SANTA ROSA

GENERAL

- APN 067-340-001
- 1.34ac parcel on Jack Nicklaus designed Mayacama Golf Course
- Mayacama membership option
- Exclusive, private, gated community
- Views of the 6th tee and 4th fairway
- Spectacular mountain and sunset views
- Built-in 2006
- 4,192 ± total living space
- 6 Bedrooms/ 6 full baths/ 1 half bath
- Black bottom infinity pool & separate spa
- 2 bedroom/ 2 bath guest casita
- 576 ± sf garage

MAIN HOUSE OVERVIEW

- 4-bedroom en-suites & 1 powder room
- Open floor plan
- Cathedral ceilings with open beams
- Hickory & Travertine floors throughout
- 8' solid wood interior doors
- Oil rubbed bronze hardware
- 4 fireplaces (terrace, great room, master bedroom, and media/bedroom)
- Surround sound system
- Smart home lighting technology throughout the home
- Home security system
- Recessed lighting and elegant light fixtures throughout
- Accent lighting and dimmers

EXTERIOR FEATURES

- Stucco with stone accents and tile roofing
- Infinity edge pool and spa
- Electric cover on both the pool and spa
- Multiple water features
- Overlooking the 6th tee and 4th fairway of the Mayacama Golf Course
- 2 car-garage with Tuscan style wood doors plus golf cart parking
- Several outdoor living spaces for relaxing or entertaining
- Loggia with flagstone floors and two-way outdoor stone fireplace
- Olive trees & lavender fields

ENTRY

- Library and sitting area
- Illuminated staircase with flagstone flooring
- Grand rotunda with cascading staircase
- Wrought iron hand rail
- Exposed beam ceiling
- Entry closet

GREAT ROOM

- Gas fireplace with stone mantle
- Cathedral ceiling with exposed wood beams
- Large view windows open to golf course and hill views
- French door access to covered patio and outdoor living spaces
- Open concept to the family room, dining room and kitchen

KITCHEN

- Granite slab counters
- Raised panel alder cabinets
- Oil rubbed bronze hardware
- Decorative backsplash and wall pot filler
- Large center island with prep sink and breakfast bar seating
- Alder cabinet oven hood
- 5-burner gas Lacanche range with dual ovens
- Sub-Zero built-in side-by-side refrigerator
- Sub-Zero pull-out refrigerated drawers
- Drawer-style dishwasher
- Sub-Zero wine refrigerator

MASTER SUITE

- Large master with golf course views
- Gas fireplace with stone mantle
- Glass door leads to patio and outdoor living spaces

MASTER EN-SUITE BATH

- Radiant heated Travertine floors
- Granite counters
- Oil rubbed bronze hardware
- Alder cabinets
- Separated dual sinks
- Tumbled stone shower with dual rainfall shower head and frameless glass door
- Soaking tub with stone surround
- Spacious walk-in closet with custom Alder built-in organizing system and motion light
- Access leading from the master bath to outdoor shower, terrace and pool

UPSTAIRS BEDROOMS 2 & 3

- Each with en-suite baths
- Walk-in showers with tumbled stone surround
- Granite counters
- Raised panel Alder cabinets and linen storage

DOWNSTAIRS BEDROOM 4

- Attached media room with 3D television
- En-suite bath with marble counters
- Claw foot tub with views to the golf course
- Walk-in shower with tumbled stone surround and frameless glass enclosure
- Built-in Alder cabinets
- Two-way gas fireplace
- Door to grounds and pool

GUEST CASITA:

- 2 guest casitas, each with their own entrance
- En-suite baths
- New Carrara stone in upper bath
- Walk-in showers with stone surround and frameless glass enclosures

OFFICE

- Dual glass doors lead to grounds and pool
- Large picture window with golf course and patio views

BUTLERS PANTRY

- Large pantry with built-in Alder cabinets and shelving
- Granite slab counters
- Built-in microwave

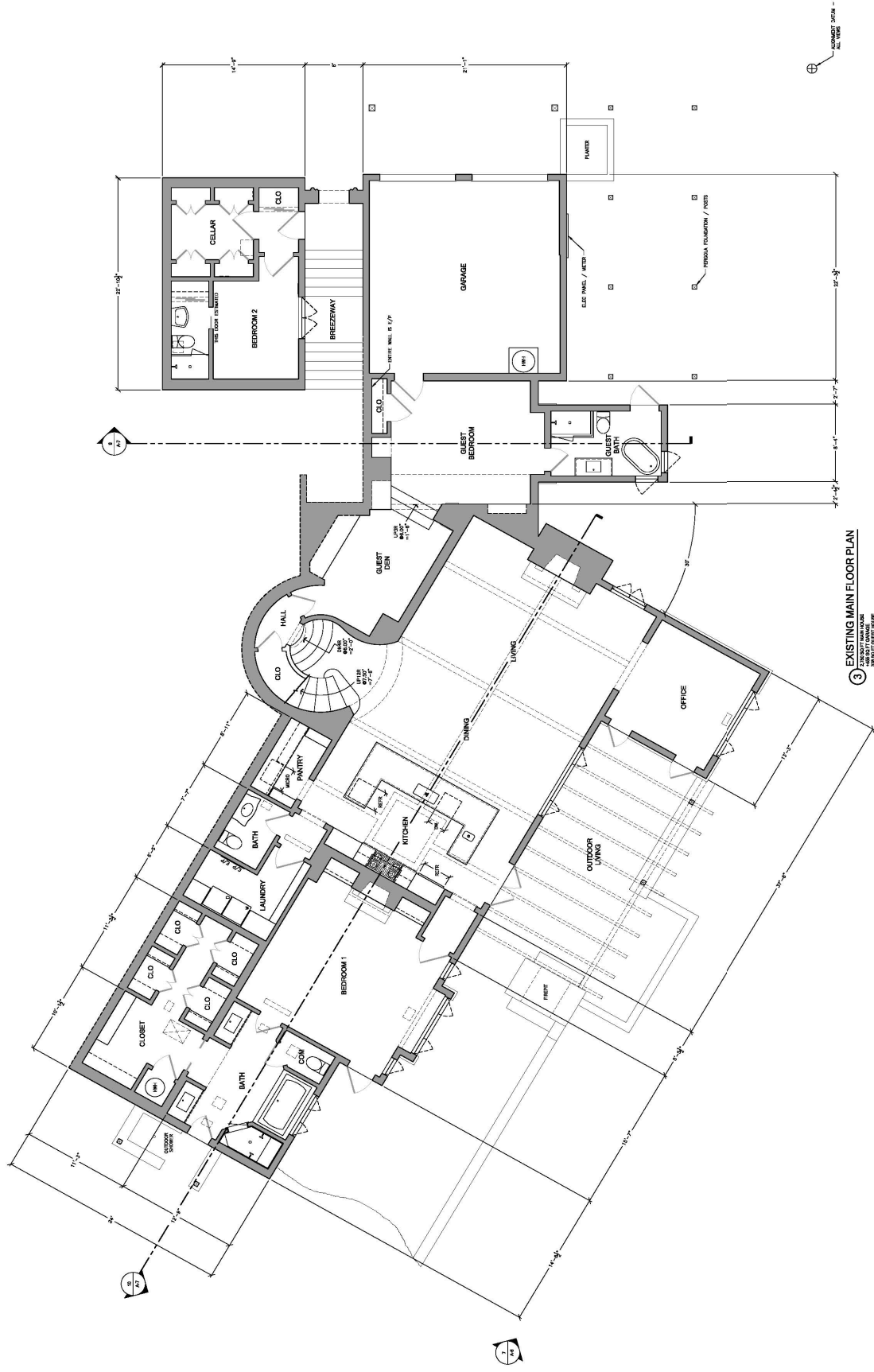
LAUNDRY ROOM

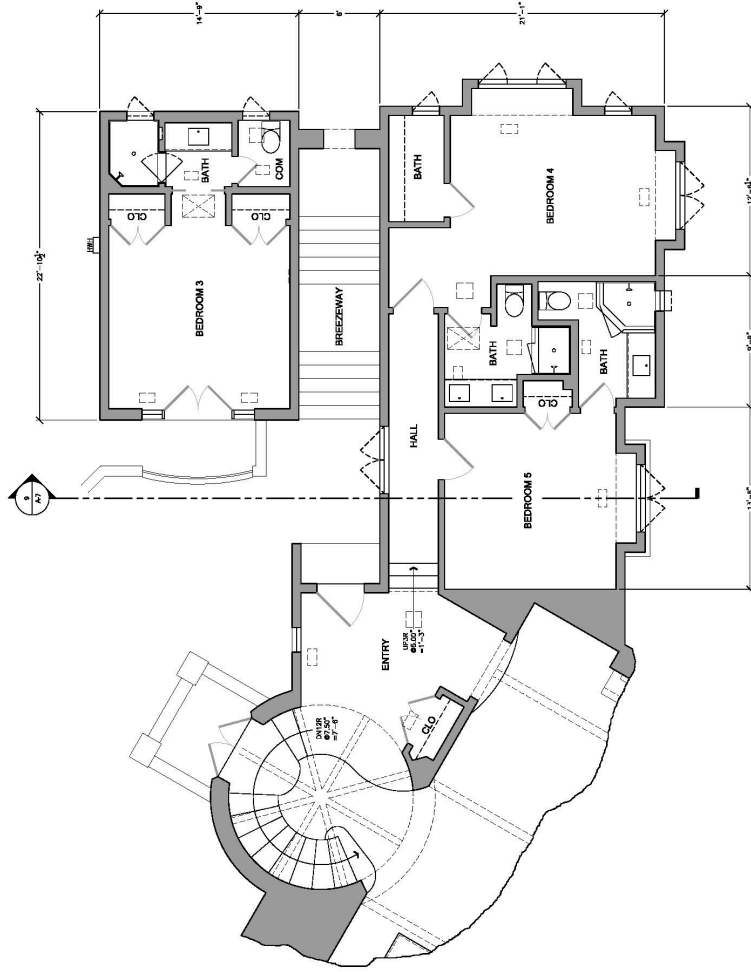
- Built-in cabinets and shelving
- Washer/dryer included

POWDER ROOM

- Alder vanity with matching framed mirror
- Marble counters
- Wall mounted faucet







4 EXISTING UPPER [ENTRY] FLOOR PLAN
NOT TO SCALE
SEE 2021 EXISTING HOUSE



STEWART

PEDRERO

5722 COTTAGE RIDGE

ARNO FLUME VINEYARDS INC

FIRST AMERICAN TRUST