



GINGER MARTIN & CO
LUXURY REAL ESTATE | SONOMA & NAPA VALLEY

777 LOMMEL ROAD, CALISTOGA // STUNNING NAPA VALLEY ESTATE

OFFERING PRICE: \$17,000,000

WWW.777LOMMELROADNAPAVALLEY.COM

Sotheby's
INTERNATIONAL REALTY

GINGER MARTIN
415.516.3939
GINGER@GINGERMARTIN.COM
LIC #00643485



777 LOMMEL ROAD, CALISTOGA // STUNNING NAPA VALLEY ESTATE

DESIGN & DETAILS

Interior Design: Rela Gleason

Architect: Bobby McAlpine

Vineyard: Managed by Saviez Vineyard Management

GENERAL

- Approximately 40 acres; 10 acres fenced
- 2 acres planted to Cabernet
- 200 ± mature producing Tuscan olive trees throughout property
- Surrounded by Preserved Land Trust
- Main home 9032 ± sf under roof: 4bd/5ba
- Guest House 1 1200 ± sf
- Guest House 2 1000 ± sf
- Central vacuum systems in all structures
- Security alarm systems in all structures
- Concrete paver tile flooring with radiant heat throughout main house
- Custom steel double paned doors and windows throughout main residence and adjoining pavilions
- Two swimming pools with automated covers
- Fruit orchards, raised vegetable beds, rose gardens, green house and chicken coop

Situated in the heart of the Napa Valley's premiere vineyards, this 40 acre compound nestles between its own two knolls, half way between St. Helena and Calistoga. Surrounded by thousands of acres of preserved Land Trust the total privacy is unique for a property just seconds off the Silverado Trail. A grove of silvery eucalyptus frames the gated entry. The driveway meanders lazily between the estate Cabernet vines and a producing grove of olive trees, past a fruit orchard and a pair of enchanting guest cottages in a stone walled private enclave with swimming pool; raised vegetable beds, rose garden, olive allée and chicken coop. Arrival to the top of the knoll is welcomed in the embrace of a tree lined motor court. The roof lines and chimney caps of the elegant main residence constructed of weathered cedar, stucco and native stone, echo the silhouettes of the surrounding hills. Three interlocking pavilions joined by covered breezeways function equally well when two people are in residence as they do for 20. Light filled spaces with soaring ceilings, steel windows, stone floors, paneling and antique reclaimed timbers open to the glorious grounds studded with giant oaks draped in moss. The main structure with the central living /dining salon, and 4 island cook's kitchen with lounge-sun room, also houses the library, master suite and guest suite. Fabulous bathrooms open to private stone walled gardens with outdoor showers. A second pavilion houses garages (even the garages have a view!) on the main level and a two bedroom "chalet" guest quarters above. The third pavilion with a gym on the main level (convertible to a garage if so desired), has an office/studio-bedroom and bath above, and a media room with full bath and underground wine cellar below. The kitchen and salon open to the gardens and covered terrace with wood burning fireplace. An infinity pool reaches long toward the valley views beyond. Lush lawn panels and clipped boxwood blend seamlessly into the surrounding forests hosting a multitude of possibilities for hiking secret trails without ever leaving the property. This architectural gem is the first of a series of California collaborations magically conjured by renown designers, Rela Gleason and architect, Bobby McAlpine. Featured in ARCHITECTURAL DIGEST, the interiors are a blend of antiques and contemporary furnishings. "Striking details...lend uncommon grace notes. This truly one-of-a kind treasure built in 2008 already has the patina of a true heirloom.

MAIN HOUSE-PAVILION ONE

SALON AND DINING ROOM

- Exposed wood beam ceilings
- Wood burning fireplace with Louis III mantle
- Mirrored pocket door leads to kitchen area
- Custom steel doors and windows
- Access to covered terrace with wood burning fireplace (gas starter)

KITCHEN

- Four islands- two stainless steel topped-two granite topped
- Double Thermador refrigerator and freezer columns and cook top
- Wolf range with French cook-top
- Chalkboard pocket door leads to Salon
- Gleason designed pendant lights illuminate stainless steel islands
- Custom built cabinetry built of solid oak tongue and groove planking
- Butler's area with integrated stone sink

SUNROOM

- Stacked Napa stone wood burning fireplace with gas starter
- Custom steel windows and doors
- Built-in T.V
- Stacked Napa stone alcove
- Motorized window shades
- Access to outdoor living spaces

MUDROOM AND BREEZEWAY

- Built-in desk and pantry
- Laundry room with built in ironing board
- Half bath with granite block vanity top and integrated stone sink
- Covered breezeway with stone potting and built-in gas BBQ

MASTER SUITE

- 11 ft weathered Cedar paneled ceilings
- Wood burning fireplace with gas Rasmussen fireballs and limestone mantel
- Motorized window shades
- Dual dressing areas, each with their own walk-in closets
- En-Suite Bath:
 - Custom soaking tub from Sonoma Cast Stone
 - Dual custom Gleason designed iron vanities with Dornbracht polished nickel vanities and Emperador marble black tops
 - Crema Marfil marble and Jerusalem stone mosaic in steam shower
 - Dual toilets, one with bidet
 - Custom made light fixtures with antique bell jars
 - Motorized window shades
 - Wood burning fireplace with gas starter and Rasmussen fireballs
 - Outdoor shower walled with stone and private garden

LIBRARY

- Weathered Cedar paneled walls and curved ceilings
- Built-in bookshelves with Parisian library sconces
- Pocket screens and motorized window shades
- Custom steel French doors lead to outdoor living space

POWDER ROOM

- Weathered Cedar paneled walls and curved ceiling with built-in bookshelves
- Granite block vanity top with integrated stone sink
- Baroque Horn framed mirror with polished nickel faucets

GUEST SUITE ONE

- 11' ceiling with tongue and groove planks
- Wood burning fireplace with gas Rasmussen fireballs and limestone mantel
- Motorized window shades
- Silk lined dressing nook
- En-suite bath:
 - Calacatta hexagonal marble tile shower walls
 - Calacatta marble block vanity with double sinks
 - Separate paneled Toilet room with bidet
 - Motorized shades
 - French door lead to outdoor shower and another private stone walled garden with antique French wall fountain

SECOND PAVILION

GUEST SUITE TWO

- Built-in banquette with hidden storage
- Wood burning fireplace with gas Rasmussen fireballs and stone mantel
- Exposed antique wood ceilings beams
- Motorized shades
- Custom steel French doors lead to second story terrace with views of surrounding mountains and outdoor shower
- Children's bedroom adjacent with built in nook "Heidi Bed" with trundle
- En-Suite Bath:
 - Carrara marble tile shower
 - Free standing tub
 - Antique vanity with stone top
 - Heated natural stone flooring
 - Motorized window shades

THIRD PAVILION

GUEST SUITE THREE

- Gorgeous views
- Currently being used as an office
- En-Suite Bath:
 - Carrara marble vanity
 - Marble tub/shower
 - Heated natural stone computer

MEDIA ROOM

- Full bath with Calacatta marble tile shower
- Projection screen

GYM

- Can be converted to garage

WINE CELLAR

- Underground; naturally conditioned
- Holds 90 cases or 1080 bottles
- Wet bar and locket storage closet

GUEST COTTAGE ONE

LIVING ROOM

- Stained concrete flooring
- Natural stone see-through fireplace
- French doors to gardens
- Massive custom antler chandelier

KITCHEN

- Stainless steel appliances
- Center island with stainless steel top
- Carrara counter-tops
- Stained concrete flooring
- See-through fireplace into living room

BEDROOM SUITE

- 11' ceilings
- French doors
- Overlooks gardens and pool
- En-Suite Bath:
 - Carrara marble shower
 - Carrara block vanity top
 - Heated natural stone flooring

GUEST COTTAGE TWO

- Two bedrooms one bath
- Spiral stairs
- French doors with pocket shutters

OUTDOOR LIVING

MAIN HOUSE POOL

- Infinity edge salt water pool overlooking valley views
- Automatic pool cover

GUEST POOL

- Automated cover
- Stone potty shed with outdoor shower

GROUNDS

- Approx. 40 Acres
- 2 acres planted to Cabernet
- Mature Oak trees
- Eucalyptus grove
- Raised vegetable beds
- Producing Tuscan Olive trees yield approx. 40 gallons per year
- Fruit orchards
- Rose gardens
- Chicken coop
- Green House
- Olive allée

SQUARE FOOTAGE

Uncovered second floor deck: 227

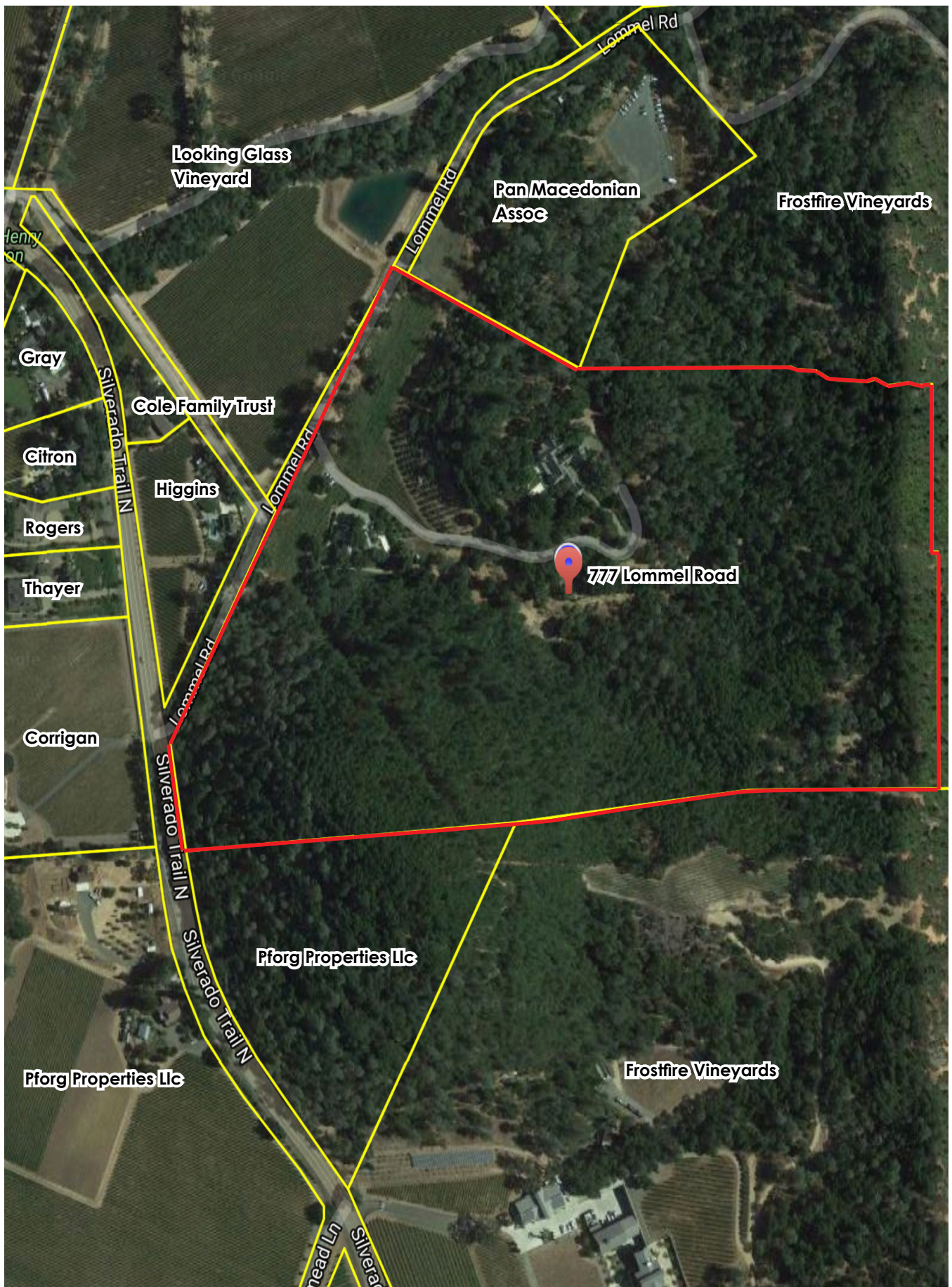
Total main house: 9032 under roof

Cottages: 2200 + 250 covered parking





This material is based upon information, which we consider reliable, but it has been supplied by third parties. we cannot represent that it is accurate or complete, and it should not be relied upon as such. This offering is subject to errors, omissions, change of price or withdrawal without notice.



Looking Glass
Vineyard

Pan Macedonian
Assoc

Frostfire Vineyards

Henry
an

Gray

Cole Family Trust

Citron

Higgins

Rogers

Thayer

Corrigan

777 Lommel Road

Pforg Properties LLC

Pforg Properties LLC

Frostfire Vineyards

Silverado Trail N

Lommel Rd

Silverado Trail N

head Ln

Lommel Rd

Lommel Rd