

# 32 POPPY LANE

## PEBBLE BEACH, CALIFORNIA



"STEEL, STONE & STYLE"

32PoppyLane.com

\$6,950,000

Presenting an exciting and stylish new Conrad Asturi Studios designed 4630 sq ft 3 bedroom plus den, 3 full and 2 half bath stunningly fresh golf course frontage home on the 5th hole of Poppy Hills Golf Course. This alluring residence boasts 14 ft ceilings, polished aggregate floors, a Corten steel roof, a voluminous master suite with over-sized dressing room/closet, boulder-lined reflecting pond and fairway front swimming pool, plus wonderful views of the Pacific and sunsets through the pines. Included is a one-of-a kind 424 sq ft separate guest house with rooftop terrace. All this found at the end of a cul-de-sac just a stroll from the Poppy Hills Country Club facilities and its incredible amenities.



GLOBAL  
LUXURY

TIM ALLEN CalBRE#00891159

c 831.214.1990

TIMALLENPROPERTIES.COM

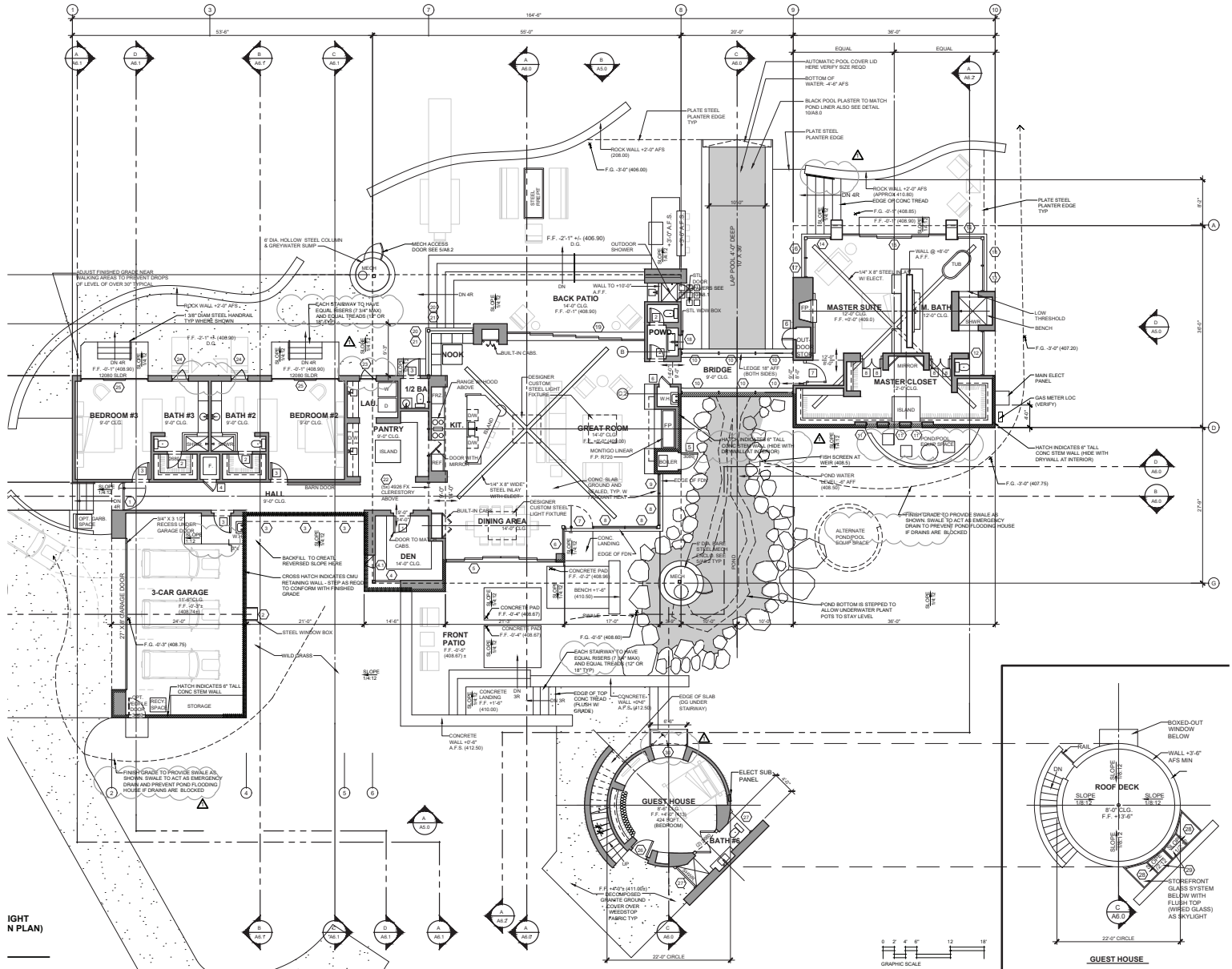
TIM ALLEN

PROPERTIES

©2017 Coldwell Banker Real Estate LLC. All Rights Reserved. Coldwell Banker® is a registered trademark licensed to Coldwell Banker Real Estate LLC. An Equal Opportunity Company. Equal Housing Opportunity. Each Coldwell Banker Residential Brokerage Office is Owned by a Subsidiary of NRT LLC. All rights reserved. This information was supplied by Seller and/or other sources. Broker believes this information to be correct but has not verified this information and assumes no legal responsibility for its accuracy. Buyers should investigate these issues to their own satisfaction. Real estate agents affiliated with Coldwell Banker Residential Brokerage are independent contractor sales associates and are not employees of Coldwell Banker Real Estate LLC, Coldwell Banker Residential Brokerage or NRT LLC. CalBRE License # 01908304.



# FLOOR PLAN



## SPECIFICS

### PROPERTY INFORMATION

Lot Size:	1 acre
Total Square Footage:	5,054
Exterior:	Plaster
Interior:	Plaster
Roof:	Corten steel
Fireplaces:	Two
Floors:	Concrete
Heat:	Radiant
Garage:	Three Car

### MEASUREMENTS

Living/Great Room:	32 x 35
Dining Area:	10 x 20
Kitchen:	10 x 19
Master Bedroom:	24 x 36
Second Bedroom:	14 x 18
Third Bedroom:	14 x 18
Number of Bedrooms:	4
Number of Baths:	4 Full + 2 Half
APN:	008-032-014