



# "ICONIC OCEAN-FRONT ESTATE"

[157Spindrift.com](http://157Spindrift.com)

PROPERTY ADDRESS:

157 Spindrift Road Carmel, CA 93923









# "ICONIC OCEAN-FRONT ESTATE"

157 SPINDRIFT, CARMEL HIGHLANDS

---

As featured in ARCHITECTURAL DIGEST and the movie "BASIC INSTINCT" this California Modern masterpiece estate meets the Pacific Coast at dramatic Wildcat Cove just minutes from Carmel. On two amazing oceanfront acres stands one of most stunning homes on the West coast. This 16-room, 12,000-square-foot residence with views of iconic Point Lobos features five bedroom suites, with six full and two half baths, copper and glass roof, breathtaking ocean views, two amazing kitchens, a must-see two-story domed library, a party floor with second kitchen & Delfield Soda Fountain, plus so much more. Interiors designed by Paul Vincent Wiseman, feature walnut floors, Mondrian-inspired bronze screens, smooth Marmorino plaster walls and an interior courtyard pool. The home is surrounded by 2+ acres of masterfully thought-out landscaping which include winding stone paths, numerous stone seating areas, several water features and massive stone entry walls with heavy wooden gates. This landmark home will amaze all who see it and will be a world-class treasure to own.

Offered at \$16,995,000

Presented by TIM ALLEN

COLDWELL BANKER DEL MONTE REALTY











FRONT EXTERIOR



REAR EXTERIOR









# PROPERTY SPECS

## PROPERTY INFORMATION

Lot Size:	2+ Acres
Total Square Footage:	12000+/- SF
Exterior:	Stucco/Copper
Interior:	Plaster/Wood/ Bronze
Roof:	Copper
Fireplaces:	Twelve
Floors:	Wood/Tile/Carpet
Heat:	Forced Air/Radiant

## MEASUREMENTS

Living Room:	35 x 18
Rec Room:	38 x 19
Master Bedroom:	22 x 20
Main Level Bedroom:	19 x 15
Guest Suite:	26 x 17
Lower Level Bedroom:	20 x 17
Number of Baths:	6 + 2 Half
Number of Bedrooms:	5
APN #:	241-192-012



## KITCHEN

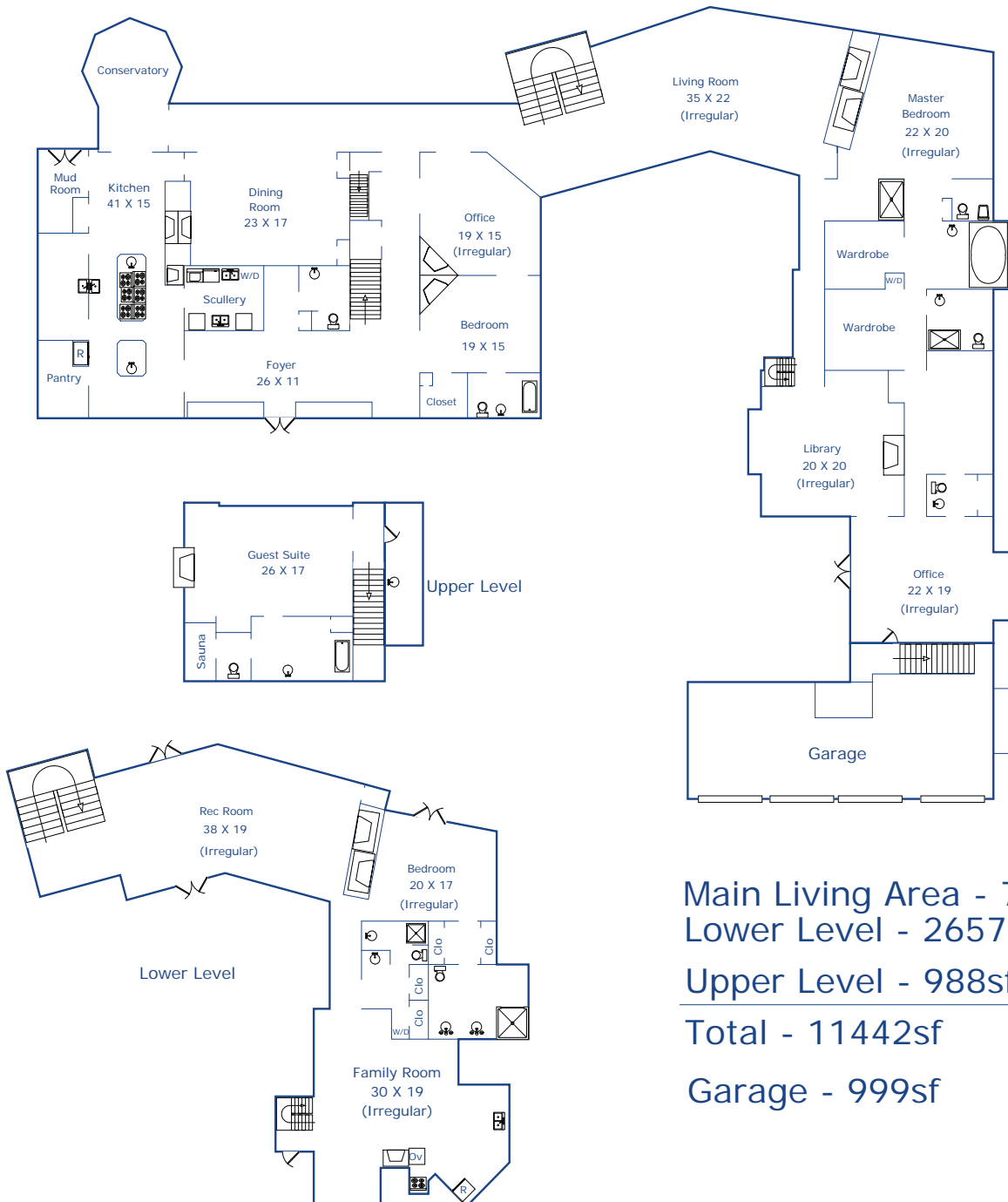








# FLOOR PLAN



Main Living Area - 7797sf

Lower Level - 2657sf

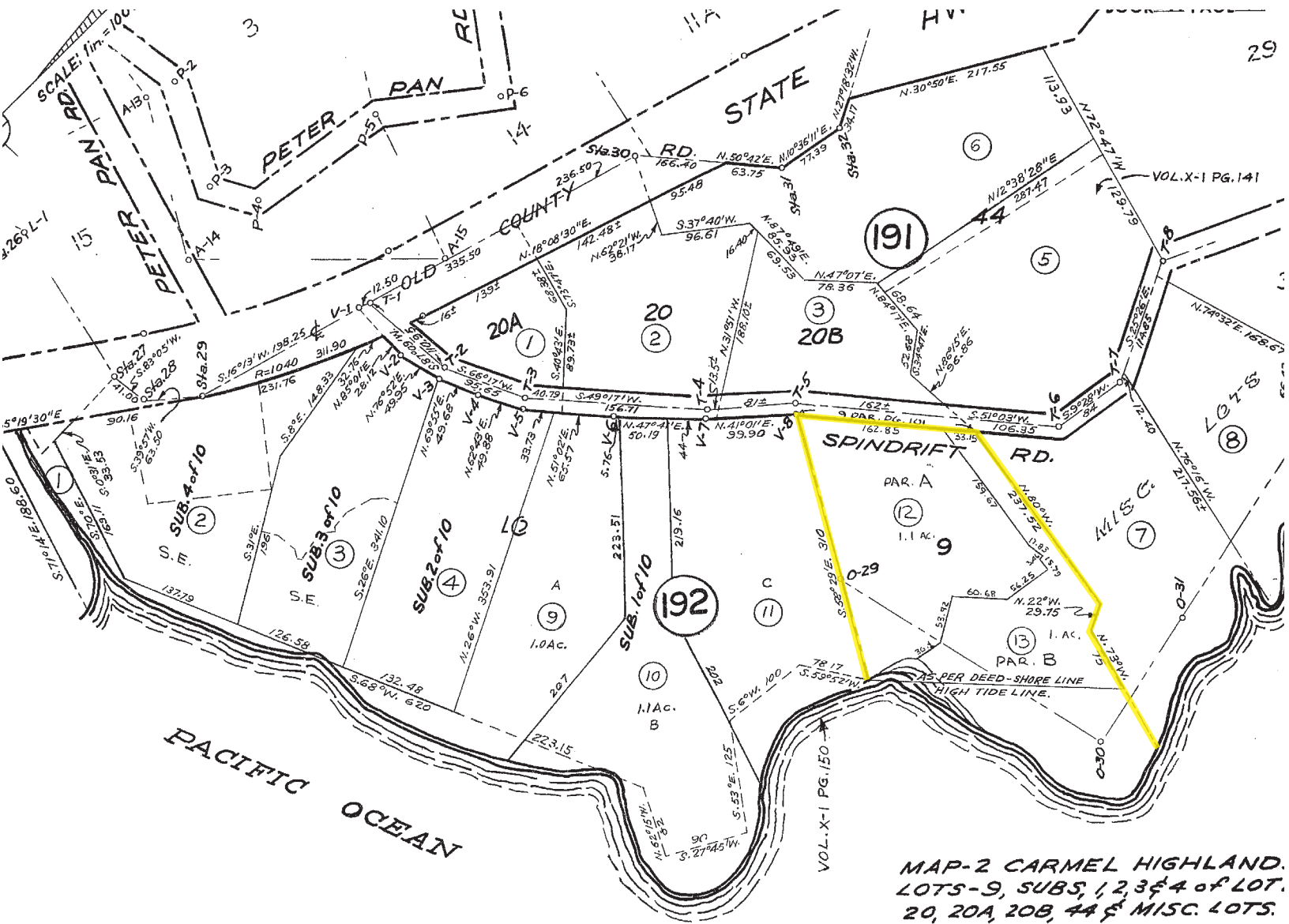
Upper Level - 988sf

Total - 11442sf

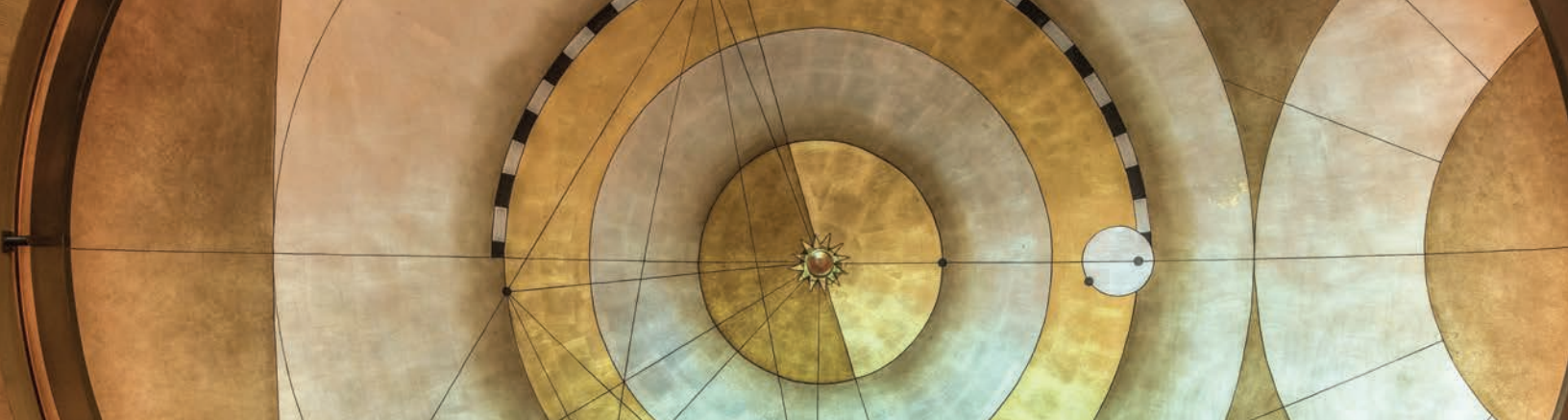
Garage - 999sf



# PARCEL MAP







## **CALIFORNIA MODERN-STYLE:**

One of the most spectacular residences and settings on the California Coast

Interiors and furniture designed by Paul  
Vincent Wiseman

Bronze work fireplaces and front doors by Randell Tuell and Victoria Reynolds

Massive stone-pillared entry gates

Circular brick entry drive, oversized 4-car garage

Copper roof, gutters, flashing & downspouts

Glass roofed entry with ability to open the roof's glass panels

Black walnut floors

Smooth Marmorino plaster (made from crushed marble and lime putty) walls throughout – widely seen in Italy, because of the hours of workmanship, the cost is very high

Audio/Visual system and Lite Touch lighting throughout home

## **KITCHEN**

- Massive granite islands with built-in sinks, Gaggenau cooktops, and stainless built-in ovens
- Oversized pizza oven
- Full wall solely for temperature controlled wine storage
- Large pantry with refrigerator
- Adjoining scullery (laundry)
- Adjoining orchid room
- Petite sitting room with fireplace and tv

## **CONSERVATORY**

- Breakfast room with ocean, Wildcat Cove, Pt. Lobos views
- Floor to ceiling glass walls and roof
- Oil-brushed bronze features

## **DINING ROOM**

- Seats a dozen or more with ocean views and Marmorino fireplace
- Mondrian-inspired bronze screens separate window gallery from dining room

## **UPSTAIRS**

- Guest suite with ocean views and fireplace
- Large bath with sauna
- Built-in bookshelves
- Main level Guest suite has adjoining spacious office
- Dark room





## LIVING ROOM

- Soaring open ceilings ocean views
- Interior courtyard/pool views
- Oversized stone-fronted fireplace
- Multiple seating areas

## MASTER SUITE

- Soaring high-pitched ceilings
- Ocean views
- Built-in video system
- Fireplace
- His and her spacious baths
- Work-out room
- Large adjoining office
- Access to large brick hot tub/spa and pool area interior courtyard

## LIBRARY

- Two stories of built-in bookshelves with a custom spiral staircase accented with ebonized walnut treads and bronze handrails
- Full wall height bronze fireplace surround
- Oak paneled walls
- Domed ceiling with gold and silver-leafed mural depicting

"Kepler's Laws of Planetary Motion"

## GARDEN-LEVEL PARTY/POOL ROOM

- Full kitchen
- Large stainless full-sized Delfield soda fountain kitchen

- Two pool changing rooms
- Spacious guest bedroom with fireplace
- Full bath
- Large ocean-view sitting room with fireplace

## POOL AREA

- Landscaping designed by William Peters
- Walled brick patio area with large pool, built-in planters,

and brick steps leading to brick hot-tub

- Dramatic waterfall transition from hot tub to swimming pool

## SURROUNDING GROUNDS

- Numerous stone paths with intimate seating areas weave through planted areas and feature drought resistant plants, flowers, succulents, massive ancient cypress, water features, patios, decks, stone seating areas built into natural rock outcroppings

- Stone steps leading to ocean-front cliffs overlooking Wildcat Cove and Pt. Lobos
- Stone fireplace and grill just feet above the waves built into the natural cliffs
- Large stone ocean-view entertainment terraces adjacent to the residence

## CARETAKER'S APARTMENT

- One bedroom with full kitchen and living room
- Full bath
- Ocean view
- Walk-in closet



## CONSERVATORY







DINING ROOM



## MAIN LEVEL BEDROOM WITH ENSUITE BATH







OFFICE



## GUEST SUITE







ENSUITE BATH AND SAUNA









LIVING ROOM



## MASTER BEDROOM







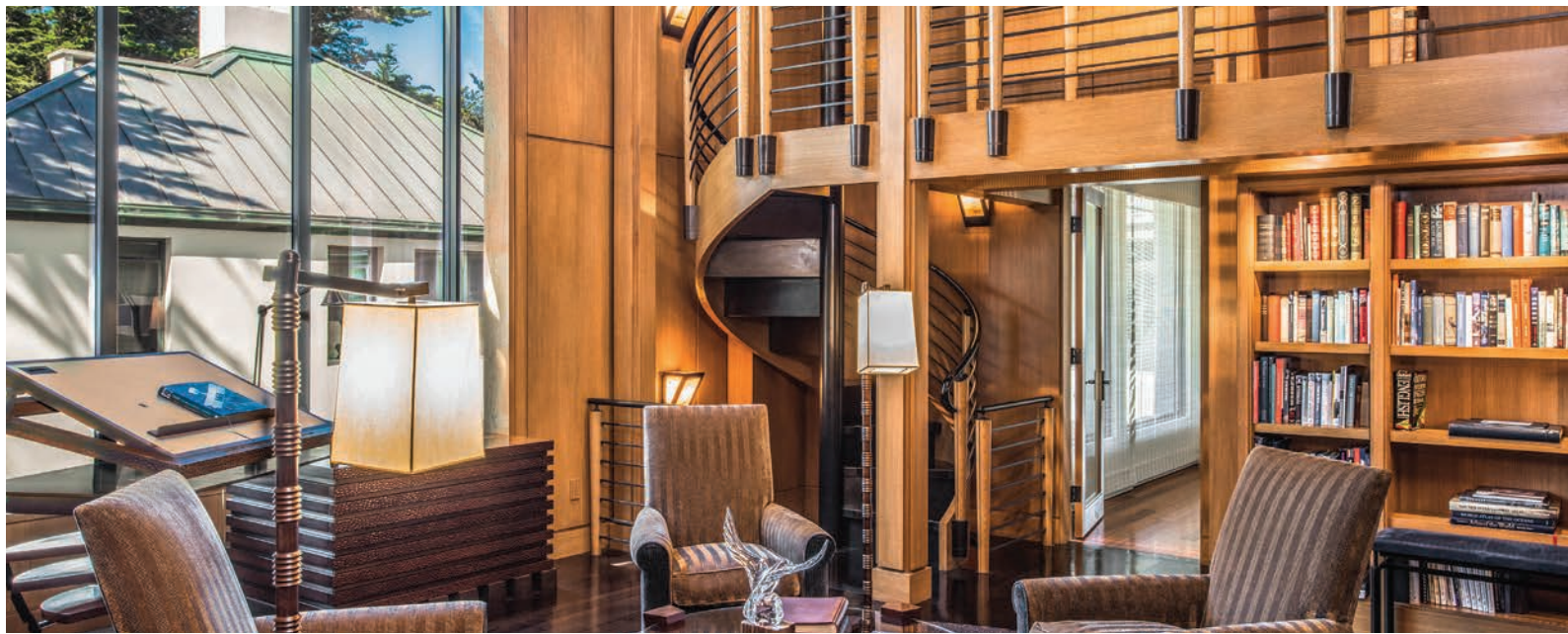
HIS AND HER BATHS WITH CLOSETS AND WORKOUT ROOM



## OFFICE







LIBRARY



## FAMILY ROOM







SECOND KITCHEN



## REC ROOM









## INNER COURTYARD POOL







HOT TUB













GLOBAL  
LUXURY

TIM ALLEN  
PROPERTIES

TIM ALLEN CalBRE#00891159  
c 831.214.1990  
TIMALLENPROPERTIES.COM

©2017 Coldwell Banker Real Estate LLC. All Rights Reserved. Coldwell Banker® is a registered trademark licensed to Coldwell Banker Real Estate LLC. An Equal Opportunity Company. Equal Housing Opportunity. Each Coldwell Banker Residential Brokerage Office is Owned by a Subsidiary of NRT LLC. All rights reserved. This information was supplied by Seller and/or other source. Buyer to verify information to be correct. Seller has not verified this information and assumes no legal responsibility for its accuracy. Buyers should investigate these issues to their own satisfaction. Real estate agents affiliated with Coldwell Banker Residential Brokerage are independent contractor sales associates and are not employees of Coldwell Banker Real Estate LLC, Coldwell Banker Residential Brokerage or NRT LLC. CalBRE License # 01508307