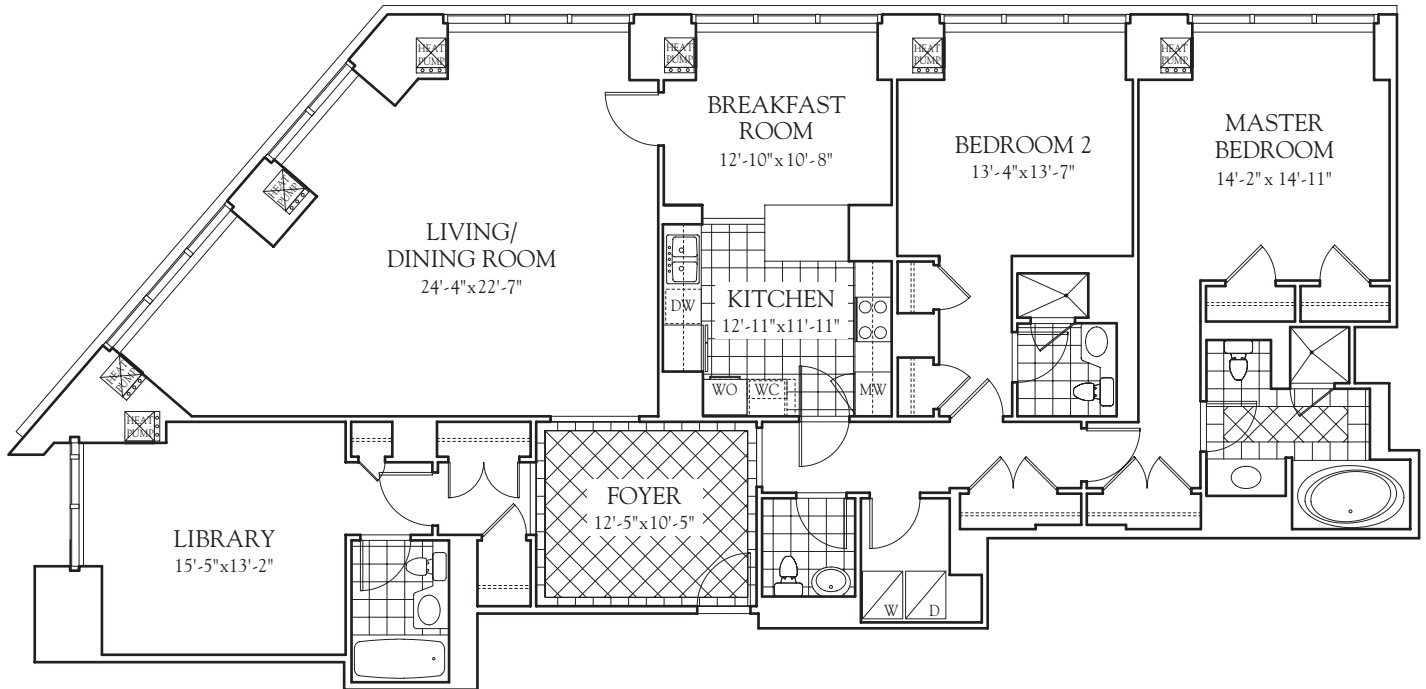
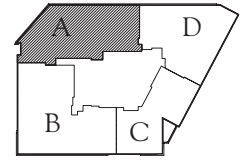


THE RESIDENCES  
AT THE RITZ-CARLTON TOWERS

*North Building - Residence A*

2 BEDROOMS, 3 1/2 BATHS,  
LIBRARY, AND BREAKFAST ROOM  
FLOORS 19-35, PH1  
2,242 SQ. FT. / 209 M<sup>2</sup>



THE RITZ-CARLTON®  
BOSTON COMMON

PLEASE CONTACT A SALES REPRESENTATIVE TO SCHEDULE A PRIVATE APPOINTMENT 617-542-1555  
WWW.MILLENNIUMPTRS.COM

A MILLENNIUM PARTNERS-BOSTON DEVELOPMENT



The Residences at The Ritz-Carlton Towers, Boston Common are not owned, developed or sold by The Ritz-Carlton Hotel Company, L.L.C. Millennium Partners-Boston Development uses The Ritz-Carlton mark under license from The Ritz-Carlton Hotel Company, L.L.C. All dimensions are approximate and subject to normal construction variances and tolerances. Sponsor reserves the right to make changes.